



Cranford Road

Barton Seagrave, Northamptonshire NN15 6RJ



Simpson & Partners

Simpson and Partners are excited to offer to the rental market this stunning barn conversion!

The beautiful property has features to include under floor heating, solid oak flooring, exposed oak beams and quality hand built bespoke oak kitchen. The accommodation comprises entrance hall, WC, lounge/diner with patio doors to the garden and kitchen with built in appliances. To the first floor is the master bedroom with mezzanine dressing area and en-suite shower room, a further bedroom and family bathroom with another bedroom on the 2nd floor.

Set within private grounds with allocated parking and enclosed courtyard style rear garden.

Available end of April

EPC C

Council Tax D

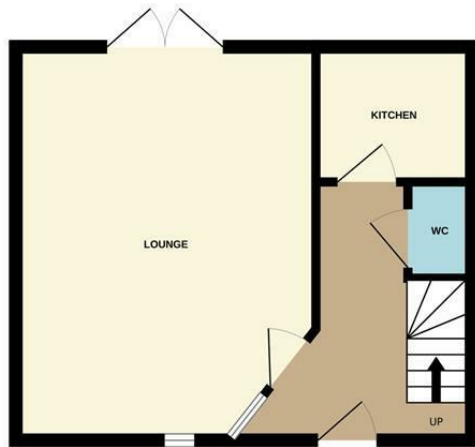
Please note 1 small pet may be considered.



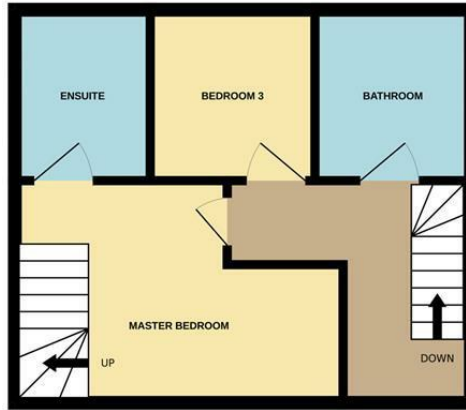
£1,400 PCM



GROUND FLOOR



1ST FLOOR




2ND FLOOR



Whilst every attempt has been made to ensure the accuracy of the floor plan contained here, measurements of doors, windows, rooms and any other items are approximate and no responsibility is taken for any error, omission, or mis-statement. The plan is copyright to Simpson and Partners and is for illustrative purposes and should only be used as such by any prospective purchaser. The services, systems and appliances shown have not been tested and no guarantee as to their operability can be given
Made with Metropix ©2026



Energy Efficiency Rating

	Current	Potential
<i>Very energy efficient - lower running costs</i>		
(92 plus) A		
(81-91) B		88
(69-80) C	78	
(55-68) D		
(39-54) E		
(21-38) F		
(1-20) G		
<i>Not energy efficient - higher running costs</i>		
England & Wales	EU Directive 2002/91/EC 	



When you buy with Simpson and Partners, you know **you'll be in safe hands**. From the moment you walk through our doors, we'll make you **feel truly welcome**. Our sales consultants and financial advisors will take you through **every step of the process**, offering **free expert advice** along the way, from help choosing the right mortgage and insurance through to finding your conveyancer. And if you need help selling your home too, **with over 20 years of local experience, you can trust us to get you moving**.



**Simpson
& Partners**

Making Every
Journey Personal



01536 518200

kettering@simpsonandpartners.co.uk

<https://www.simpsonandpartners.co.uk/>

1 Silver Street, Kettering, Northants, NN16 0BN