



Guide Price
£460,000

Freehold

4x  2x  1x 

**Redwing Gardens,
Ashford, Kent, TN25**

Wards
Helping you move forwards



Main features

- Edge of development
- Remainder of NHBC guarantee
- Guest cloakroom
- Utility room
- Study
- En-Suite to main bedroom
- Carport and driveway parking
- No Chain

Accommodation

GROUND FLOOR

Entrance Hall

Cloakroom

Study: 11'2 x 8'1 (3.41m x 2.47m)

Lounge: 15'8 x 10'9 (4.78m x 3.28m)

Kitchen/Dining Room: 22'1 x 9'4 (6.74m x 2.85m)

Utility: 7'7 x 5'6 (2.31m x 1.68m)

FIRST FLOOR

Landing

Bedroom 1: 14'2 x 11'4 (4.32m x 3.46m)

En-Suite

Bedroom 2: 10'2 x 9'8 (3.10m x 2.95m)

Bedroom 3: 10'2 x 9'5 (3.10m x 2.87m)

Bedroom 4: 11'4 x 8'2 (3.46m x 2.49m)

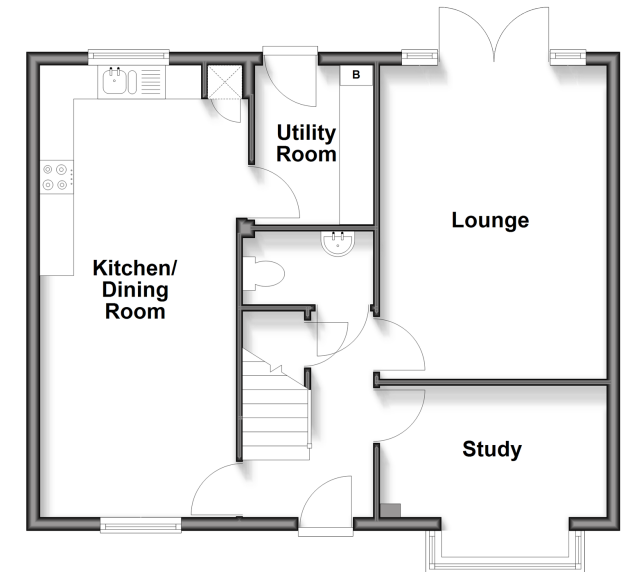
Bathroom

OUTSIDE

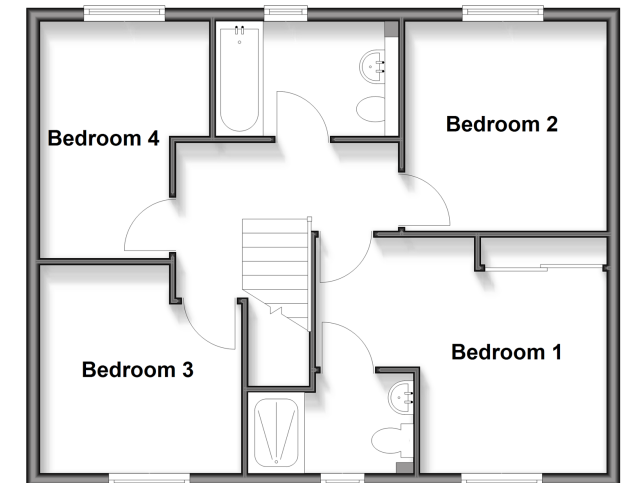
Rear Garden

Carport and Driveway Parking

Ground Floor
Approx. 56.1 sq. metres (604.0 sq. feet)



First Floor
Approx. 56.2 sq. metres (604.6 sq. feet)



Call Ashford - 01233 639531 ■ wardsof Kent.co.uk

■ If buying to rent, please check if Local Authority licensing schemes apply before proceeding



12243637/20260511/KV/JRB