



## Gleneldon Road, SW16

£450,000

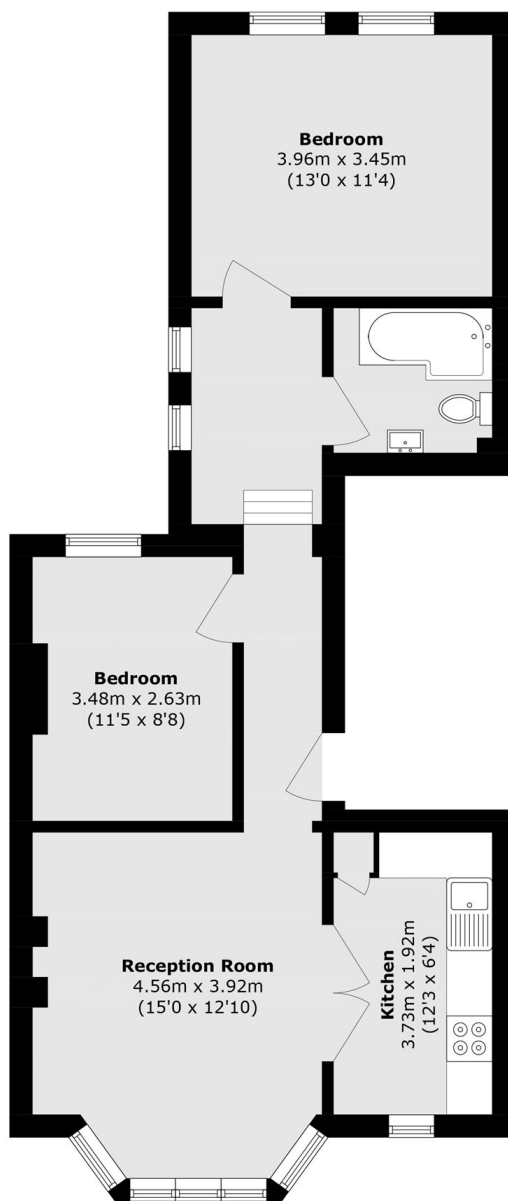
OFFERS OVER A spacious two double bedroom period conversion extending over 673 sq ft, featuring a large, bright living room and a separate modern kitchen. The property has been recently redecorated throughout, offering a fresh and inviting living space.

Gleneldon Road is a highly sought-after residential street, ideally located within easy reach of Streatham railway station, offering direct rail links to London Bridge. The area is also well served by frequent bus routes providing convenient access to Brixton. Perfectly positioned, the property benefits from a wide selection of bars, restaurants, and shops along Streatham High Road.

### Features

- Two Double Bedrooms
- Period Conversion
- Over 673 Sq Ft
- Modern Kitchen
- Large Reception
- Bright Reception Room

# Gleneldon Road, London, SW16



Total area (approx.): 62.6 sq. m (673.8 sq. ft)