

House - Terraced

SANDOWN AVENUE, DAGENHAM, RM10 8XD

Per Month

£2,200 Per

FEATURES

- ***AVAILABLE NOW***
- CLOSE TO DISTRICT LINE TUBE STATION
- THREE BEDROOMS
- LOUNGE/DINER
- FITTED KITCHEN
- FIRST FLOOR 4 PIECE BATHROOM SUITE
- D/GLAZING & GCH
- OFF STREET PARKING



STEPS

Estate Agents

3 Bedroom House - Terraced located in Dagenham

Steps are pleased to offer for rent this three bedroom family home located in Dagenham East. The property is conveniently located for Dagenham East District Line Tube Station and local shopping facilities. To the ground floor is your lounge/diner and kitchen, with your three bedrooms and bathroom suite to the first floor. With added benefits to include, Gas central heating, double glazing and Off street parking.

Entrance

Via double glazed door to hallway

Hallway

Laminate effect wood flooring. Staircase to first floor. Under stairs storage cupboard. Doors to

Lounge/Diner

22'11" x 11'10" > 12'8"

Double glazed bay window to front. Double glazed window to rear. Two radiators. Feature fire place

Kitchen

8'0" x 6'11"

Range of fitted wall and base units with work tops. Stainless steel single drainer sink unit with mixer taps and tiled splash backs. Cooker, washing machine, fridge and freezer. Laminate effect wood flooring. Double glazed window to rear. Double glazed door to garden.

Landing

Doors to

Bedroom One

11'3" x 10'4"

Double glazed window to front. Radiator. Fitted wardrobes.

Bedroom Two

11'3" x 9'11"

Double glazed window to rear. Radiator. Built in cupboard.

Bedroom Three

8'0" x 7'4"

Double glazed window to front. Radiator.

Bathroom

7'11" x 7'7"

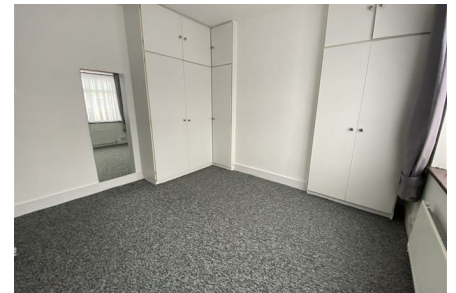
Corner bath. Corner walk in shower cubical. Inset wash hand basin with mixer taps and storage under. Low level WC. Tiled walls. Spot lights. Radiator. Obscure double glazed window to rear.

Rear Garden

Patio area leading to lawn

Front Garden

Providing off street parking.



DAGENHAM SALES | STEPS ESTATE AGENTS, 298 HEATHWAY, DAGENHAM, ESSEX, RM10 8LU

Call us on

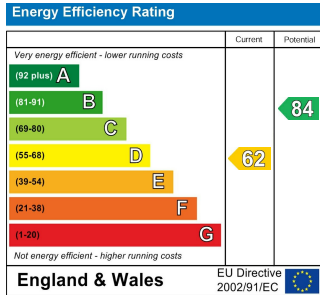
020 8593 5933

dagenham@steps.me.uk

www.steps.me.uk

Council Tax Band

C



Agents Note: Whilst every care has been taken to prepare these particulars, they are for guidance purposes only. All measurements are approximate and are for general guidance purposes only and whilst every care has been taken to ensure their accuracy, they should not be relied upon and potential buyers are advised to recheck the measurements.

