



Pinkmove

Daffodil Court

Offers in the region of £300,000

- Three Bedrooms
- Modern Open Plan Kitchen/Diner with Island and Breakfast Bar
- Family Bathroom
- Single Garage with Power
- Driveway for Multiple Vehicles
- Enclosed, Low Maintenance Garden
- Close to Shops, Schools and Amenities
- Excellent Transport Links
- EPC Rating: C



Pinkmove

 3
  1
  2

Pinkmove

01633 746088
team@pinkmove.co.uk



Pinkmove

About the property

Located in the sought-after Daffodil Court in Cwmbran, this inviting three-bedroom semi-detached home offers modern living in a convenient and family-friendly setting. The area is well served by a range of local amenities, including supermarkets, independent shops and Cwmbran Shopping Centre, all within easy reach. Families will appreciate the selection of well-regarded primary and secondary schools nearby, while excellent transport links—including regular bus services and close proximity to the A4042—provide straightforward travel to Newport, Cardiff and the wider region.

The ground floor welcomes you with a warm and comfortable lounge positioned at the front of the property, ideal for relaxing evenings. To the rear, a spacious and contemporary open-plan kitchen and dining area creates the heart of the home. This beautifully presented space features a modern kitchen island, a breakfast bar and abundant natural light that floods the dining area, making it perfect for both everyday living and entertaining.

Upstairs, the property offers three versatile bedrooms that can be adapted to suit your needs, alongside a well-appointed family bathroom. Outside, the enclosed rear garden provides a private and low-maintenance space to enjoy throughout the year. Additional benefits include a single garage and a generous driveway capable of accommodating multiple vehicles.

This is a wonderful opportunity to secure a stylish and well-located home in a desirable part of Cwmbran.



Pinkmove



Pinkmove



Accommodation

Lounge

15' 9" x 12' 9" (4.80m x 3.89m)
Max Measurements

Kitchen/Diner

17' 6" x 15' 11" (5.33m x 4.85m)

Bedroom 1

10' x 9' 3" (3.05m x 2.82m)

Bedroom 2

12' 2" x 9' 3" (3.71m x 2.82m)

Bedroom 3

7' 7" x 6' 11" (2.31m x 2.11m)

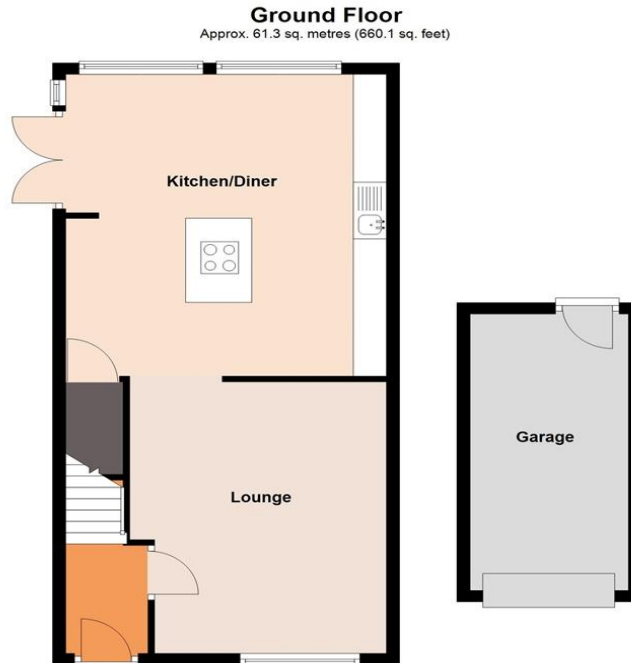
Bathroom

5' 6" x 6' 11" (1.68m x 2.11m)

Garage

16' x 7' 10" (4.88m x 2.39m)

Floorplan



Total area: approx. 97.4 sq. metres (1048.5 sq. feet)
123 Daffodil Court

Important Information

Note while we endeavour to make our sales details accurate and reliable, if there is any point which is of particular interest to you, please contact the office and we will be pleased to confirm the position for you. We have not personally tested any apparatus, equipment, fixtures, fittings or services and cannot verify they are in working order or fit for their purposes. Nothing in these particulars is intended to indicate that carpets or curtains, furnishings or fittings, electrical goods (whether wired or not). Gas fires or light fittings or any other fixtures not expressly included form part of the property offered for sale. This computer generated Floorplan, if applicable, is intended as a general guide to the layout and design of the property. It is not to scale and should not be relied upon for dimensions. Tenure: We cannot confirm the tenure of the property as we have not had access to the legal documents. The buyer is advised to obtain verification from their solicitor or surveyor.

Peter Alan Limited is registered in England and Wales under company number 2073153, Registered Office is Cumbria House, 16-20 Hockliffe Street, Leighton Buzzard, Bedfordshire, LU7 1GN. VAT Registration Number is 500 2481 05. For activities relating to regulated mortgages and non-investment insurance contracts, Peter Alan Limited is an appointed representative of Connells Limited which is authorised and regulated by the Financial Conduct Authority. Connells Limited's Financial Services Register number is 302221. Most buy-to-let