



## Teignmouth Road, NW2

**£853** Per week

This split level three bedroom three bathroom first floor flat is ideally situated in the sought after Mapesbury. The flat is bright and spacious with a separate reception room, an eat-in family kitchen with all appliances, high ceilings, bespoke features, excellent storage space, and a private garden.

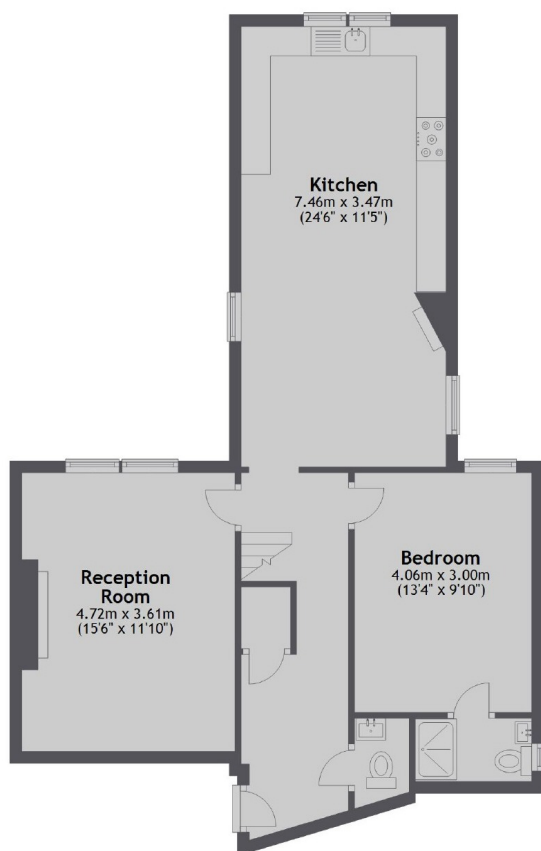
The property is ideally located for someone looking to settle down on a quiet street in the popular Mapesbury Conservation Area, with the Jubilee line under half a mile away.

### Features

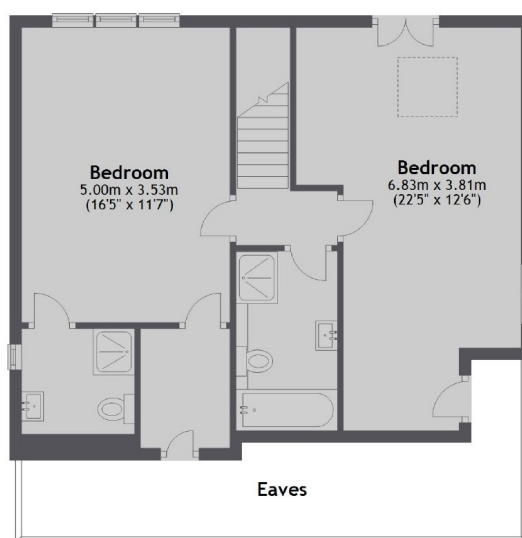
- Three Double Bedrooms
- Three Bathrooms
- Private Garden
- Private Parking
- Wood floors throughout
- Spilt Level

# Teignmouth Road, London, NW2

Ground Floor



First Floor



Total area: approx. 127.9 sq. metres (1377.0 sq. feet)

## Dexters

Cricklewood  
28-30 Cricklewood Broadway  
London  
NW2 3HD  
Lettings  
020 7794 1730

Energy Rating: D. We aim to make our particulars both accurate and reliable. However they are not guaranteed; nor do they form part of an offer or contract. If you require clarification on any points then please contact us, especially if you're traveling some distance to view. Please note that appliances and heating systems have not been tested and therefore no warranties can be given as to their good working order.

 **RICS** | Regulated  
Estate Agent  
and Letting Agent

[dexters.co.uk](https://www.dexters.co.uk)