



## Darfield Road, SE4

£800,000

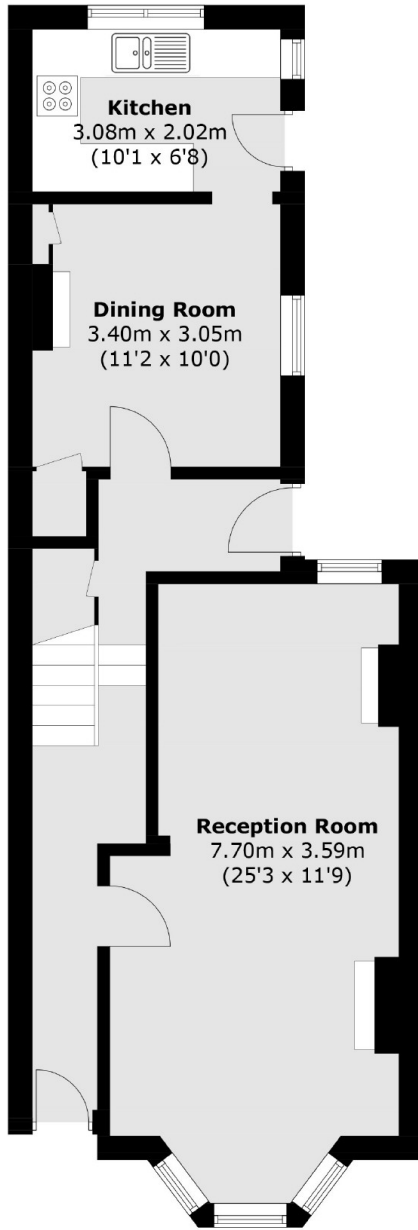
With scope to modernise to your own taste, a three bedroom Victorian house with a private rear garden well positioned for Hilly Fields and amenities of Brockley and Ladywell Village.

Darfield Road is a pretty, tree lined Victorian road conveniently positioned for Crofton Park, Brockley and Ladywell train stations and the open spaces of Hilly Fields and Blythe Hill and Brockley and Ladywell Cemetery. The great independent cafés and shops of Crofton Park are located at the top of the road. There are also plenty of options for Ofsted 'Outstanding' schools in the local area.

### Features

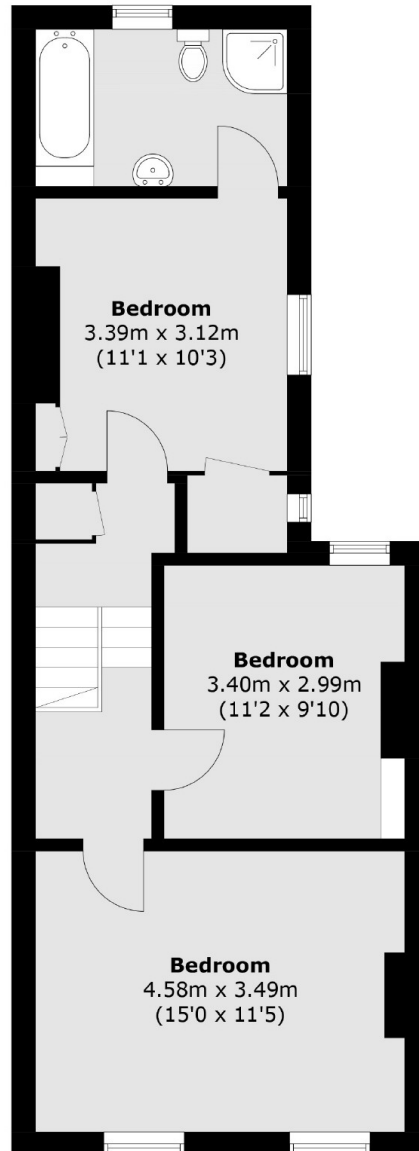
- Three Double Bedrooms
- Double Reception Rooms
- Victorian Terrace
- Private Rear Garden
- Catchment For Highly Rated Schools

# Darfield Road, London, SE4



## Ground Floor

Total area (approx.): 106.8 sq. m (1,149.6 sq. ft)



## First Floor

**Dexters**

Brockley  
369 Brockley Road  
London  
SE4 2AG  
Sales  
020 8815 2220

Energy Rating: D. We aim to make our particulars both accurate and reliable. However they are not guaranteed; nor do they form part of an offer or contract. If you require clarification on any points then please contact us, especially if you're traveling some distance to view. Please note that appliances and heating systems have not been tested and therefore no warranties can be given as to their good working order.

 **RICS** | Regulated  
Estate Agent  
and Letting Agent

dexters.co.uk