



BY DESIGN

Byrelea

Peak Lane, Compton Dundon, TA11 6PE

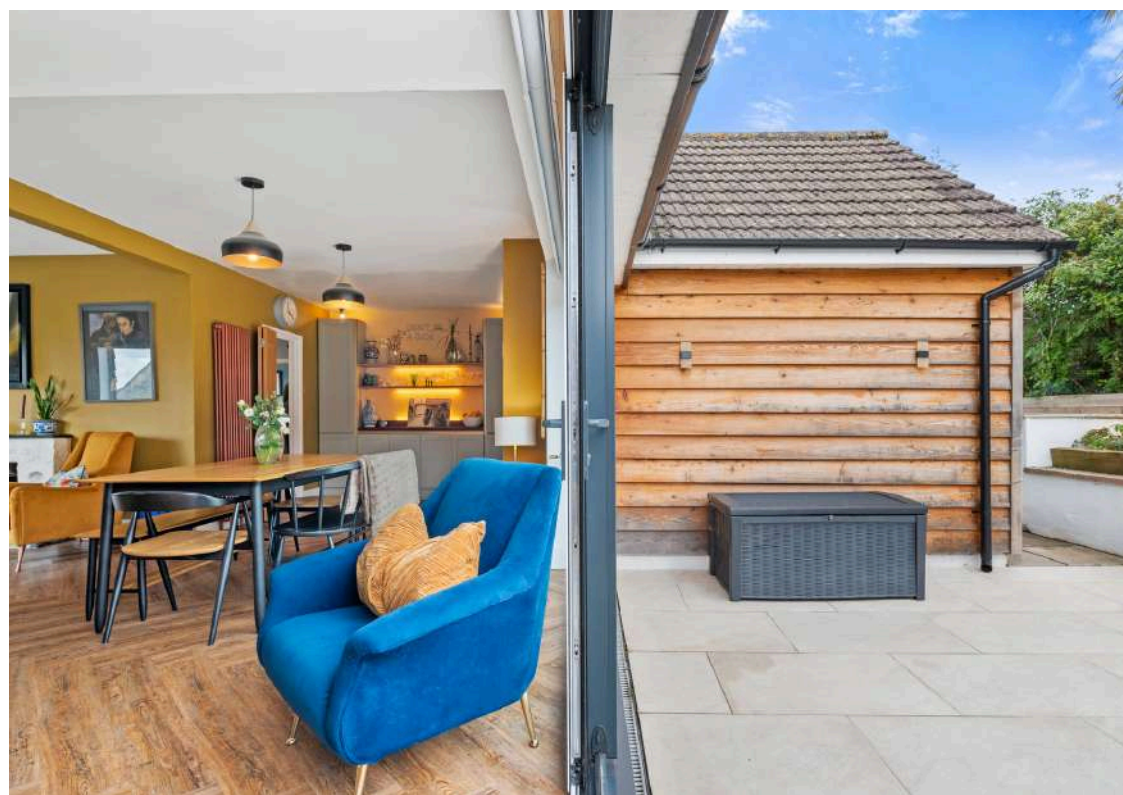
A five bedroom country home, beautifully reimagined for modern family living

An inspired contemporary home in a tranquil village setting, offering open-plan living, exceptional design, and sweeping countryside views.

Occupying a peaceful elevated position on the edge of the sought-after village of Compton Dundon, Byrelea represents refined architectural design and relaxed country living.

This five-bedroom detached home has been thoughtfully reimagined from top to bottom, combining the warmth of traditional materials with fresh, contemporary sensibility. The result is a light-filled, flexible home that connects beautifully to its surroundings.

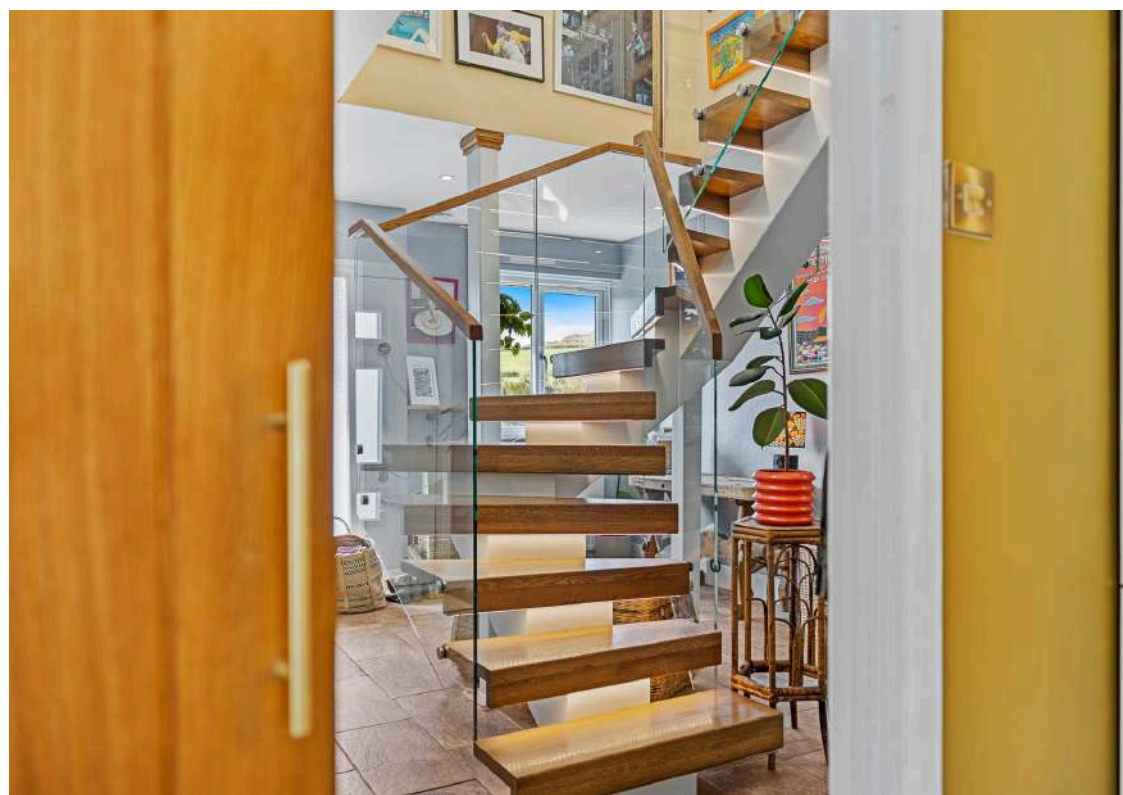
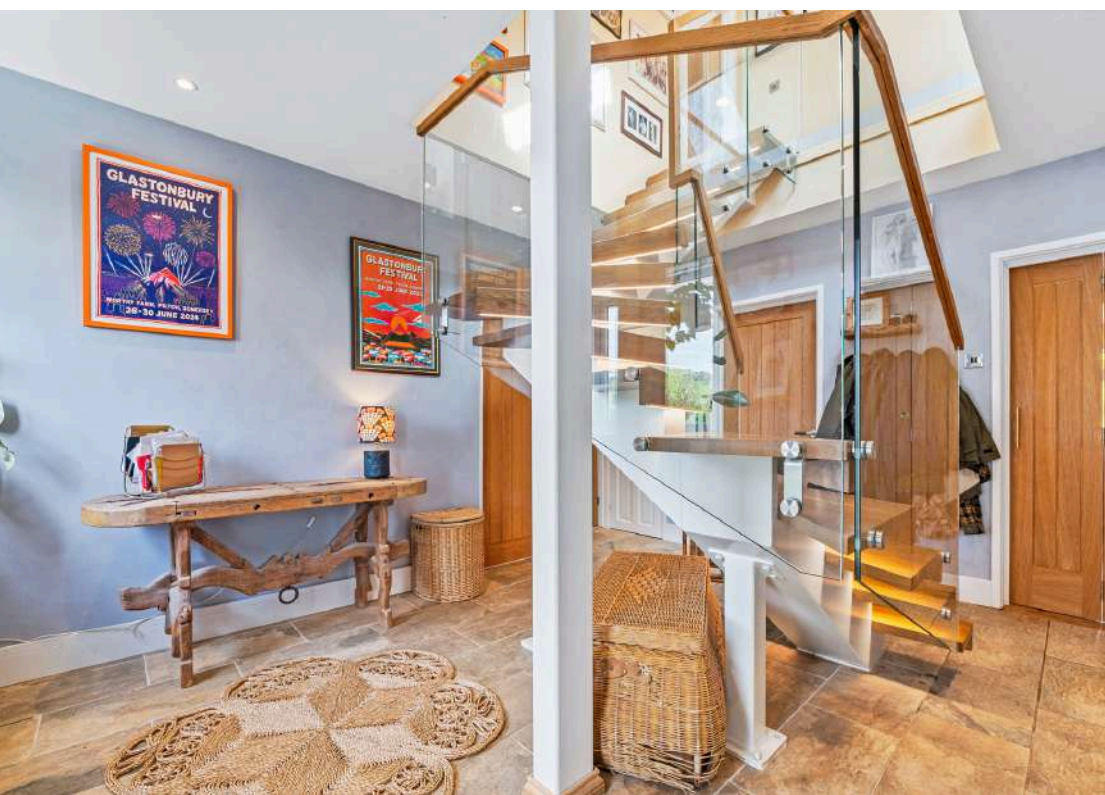




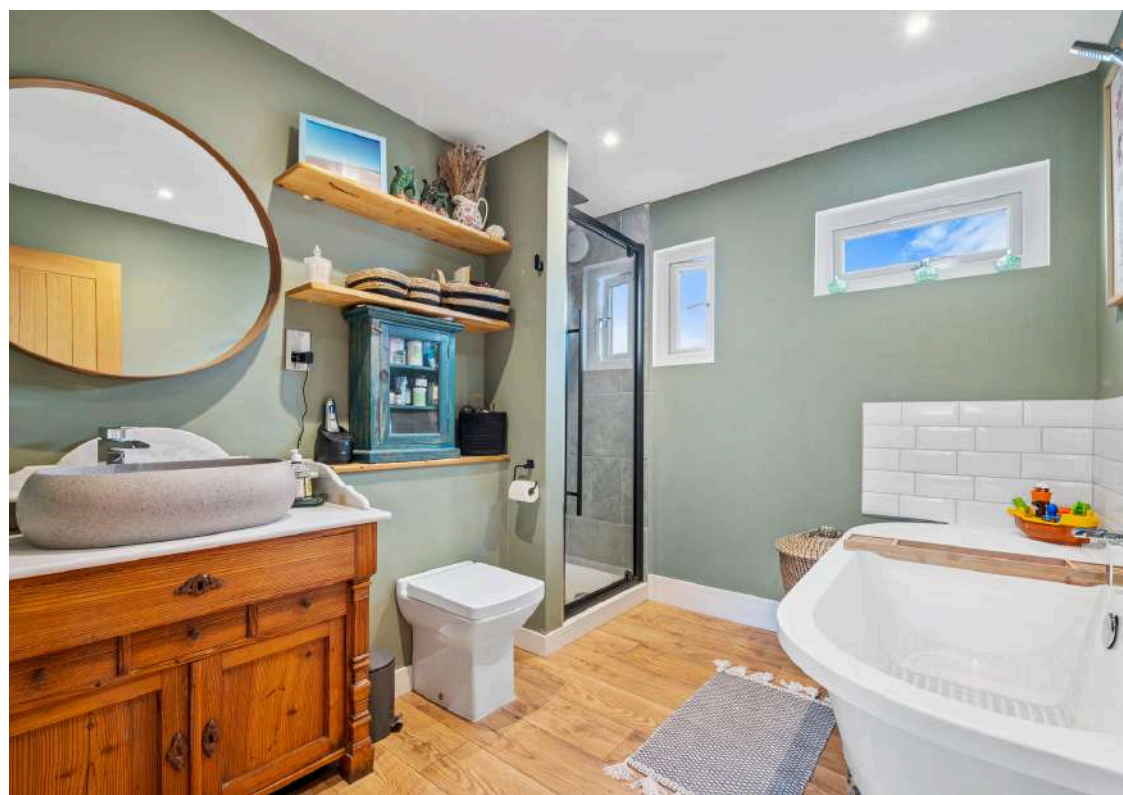
















Key features

Ground Floor

The reception hall is a statement in itself - underfloor heating and natural stone tiles lead the way to a striking solid oak staircase, crafted with glass balustrades and softly illuminated treads, setting the tone for the home's stylish interior.

At the heart of the home lies a superb open-plan kitchen, dining and family space - the perfect setting for both relaxed living and entertaining. Expansive sliding glass doors flood the room with natural light and open directly onto a large sun terrace. The bespoke kitchen combines contemporary cabinetry with high-quality integrated appliances, while a separate utility room and WC are positioned off the entrance hall.

To the front, a separate living room offers a cosier retreat, complete with feature fireplace. Two ground-floor bedrooms offer excellent flexibility, easily adaptable as guest rooms, a study, or creative space.

First Floor

The principal suite enjoys a calm, elevated outlook across the gardens and surrounding countryside. This serene space includes a smart en suite shower room and ample storage. Two further bedrooms and a beautifully appointed family bathroom complete the first-floor accommodation, creating a balanced layout that works perfectly for both family life and entertaining guests.

Outside

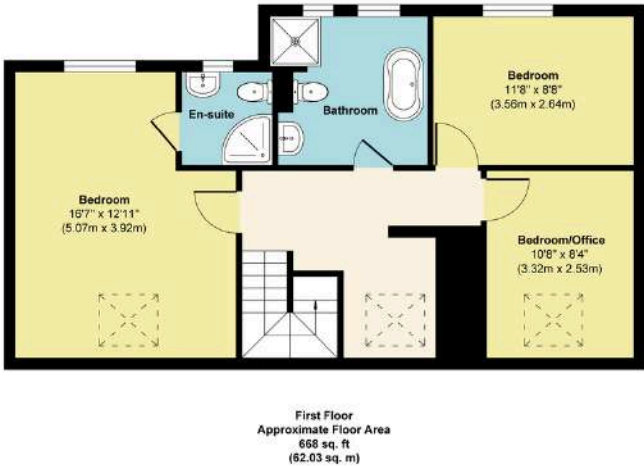
The gardens at Byrelea have been landscaped with both form and function in mind. To the rear, generous lawns are framed by mature trees and planting, offering privacy and year-round colour. Two large terraces provide wonderful spots for alfresco dining and relaxation.

A detached garage and plenty of parking are accessed by a horseshoe driveway.

What3Words - ///otters.outdoor.graph



Energy Efficiency Rating		
	Current	Potential
Very energy efficient - lower running costs		
(92+) A		90
(81-91) B		
(69-80) C		59
(55-68) D		
(39-54) E		
(21-38) F		
(1-20) G		
Not energy efficient - higher running costs		
England & Wales		EU Directive 2002/91/EC



Approx. Gross Internal Floor Area 2010 sq. ft / 186.71 sq. m (Including Garage)
Illustration for identification purposes only, measurements are approximate, not to scale.

Byrelea, Peak Lane, Compton Dundon, TA11 6PE

About the area

Compton Dundon

The village is situated on the B3151 between Somerton and Street. Compton, Dundon, & Littleton share a range of community facilities including the church and cricket pitch, in Dundon, and a post office, village hall, and The Castlebrook Inn public house in Compton.

Just south of the village is Great Breach and Copley Woods, a biological Site of Special Scientific Interest which is a Nature Conservation Review Woodland Site, owned and managed by the Somerset Wildlife Trust.

Clarks Village, Millfield School and Street are just a 5 minute drive to the north.



Somerset

A mesmerising county nestled in the scenic south west of England.

Famed for attractions like Glastonbury Tor, Wells Cathedral, Cheddar Gorge & Caves, The Levels and of course, The Mendip Hills Area of Outstanding Natural Beauty.

Somerset is a rural area, with plenty of farming and is well known for the production of cheese and cider.





BY DESIGN

Mark Manning

Mark.Manning@ByDesignHomes.com

01749 601400 / 07967 565220

ByDesignHomes.com



International audience

local knowledge

