

15-17 Eastgate Street, Bury St. Edmunds, Suffolk, IP33 1XX
Tel: 01284 760770
bury@shiresestateagents.co.uk
www.shiresresidential.com

shires

Estate & Letting Agents



Northgate Street, Bury St. Edmunds, IP33 1HP

Rent - £1,750 Per Month

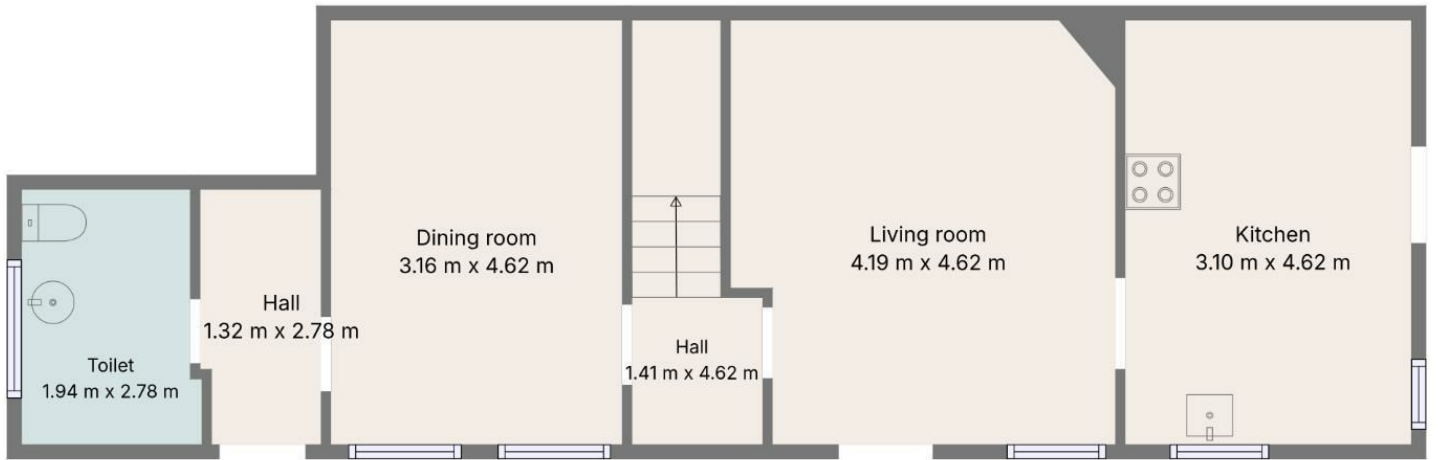
Deposit - £2,019

A charming detached house on Northgate Street offers three well-proportioned bedrooms. This property is ideal for families or those seeking extra space. One of the standout features of this property is the large enclosed garden and the modern kitchen. Additionally, the property boasts a garage and off-road parking for two vehicles, ensuring that parking is never a concern. Situated in the centre of Bury St. Edmunds, residents will benefit from easy access to a variety of local amenities, including shops, restaurants, and parks.

- DETACHED HOUSE
- THREE BEDROOMS
- CLOSE TO TOWN CENTRE
- COUNCIL TAX BAND - C
- AVAILABLE END OF JUNE
- MODERN KITCHEN
- GAS HEATING & ENERGY RATING - C
- MODERN SHOWER ROOM
- GARAGE, OFF ROAD PARKING & ENCLOSED GARDEN



Council Tax Band: C - EPC Rating: C 69



Sizes and dimensions are approximate, actual may vary.

