



Hedgehog Cottage, 2 Henrys Croft, The Lizard, TR12 7AX

£260,000 Freehold

CHRISTOPHERS
ESTATE AGENTS

Hedgehog Cottage, 2 Henrys Croft

- THREE BEDROOM MID-TERRACED PROPERTY
- GARAGE, OFF ROAD PARKING AND GARDENS
- HAS BEEN RUN AS A SUCCESSFUL HOLIDAY HOME
- OIL FIRED CENTRAL HEATING & DOUBLE GLAZING
- SHORT STROLL FROM THE CENTRE OF THE VILLAGE
- BEAUTIFULLY PRESENTED
- WELL APPOINTED BATHROOM/SHOWER ROOM
- FREEHOLD
- COUNCIL TAX EXEMPT
- EPC C-75

Having been operated as a successful holiday home for a number of years, the property equally lends itself to those seeking a stylish and modern residence in this bustling coastal village on the Lizard Peninsula — an Area of Outstanding Natural Beauty.

The home benefits from oil-fired central heating and double glazing.

The accommodation, in brief, comprises an entrance hall, a comfortable lounge, a beautifully appointed kitchen/diner and a cloakroom/WC. To the first floor there are three bedrooms and a spacious, well-appointed bathroom/shower room.

The property enjoys a convenient position, just a short stroll from the heart of the village and its excellent range of amenities.







The Lizard is mainland Britain's most southerly village — a truly special place that juts out into the sea where the Atlantic Ocean meets the English Channel. The surrounding area has been designated an Area of Outstanding Natural Beauty, renowned for its dramatic coastal scenery and unique natural environment.

With The Lizard as a base, one is perfectly placed to access all of the delights that the area has to offer with stunning coastal walks along the dramatic cliffs of the Lizard Point to the beautiful nearby beaches. Close by is the iconic Kynance Cove, within walking distance of about a mile. Nearby is the traditional fisherman's cove at Cadgwith, whilst the sailing waters of the Helford river are also situated on the Peninsula.

Just a short stroll from the property, the village offers a range of everyday amenities including a food store and butcher (which incorporates a delicatessen and stocks further food items). The village has a doctor's surgery, public house, inn, restaurants and a farm shop. There is an excellent primary school with nursery within the village, while a comprehensive secondary school can be found in the nearby village of Mullion, approximately five miles away.

The market town of Helston lies around ten miles distant and provides a wider range of facilities including national retailers, supermarkets, gyms and a leisure centre, with indoor swimming pool.

THE ACCOMMODATION COMPRISES

PART GLAZED DOOR TO ENTRANCE HALLWAY

ENTRANCE HALLWAY

With coat hanging space, stairs rising to the first floor and doors to the lounge,

LOUNGE 16'9" x 13'3" (5.12 x 4.05)

A well proportioned space with double-glazed sash window to the front aspect and doors opening through to the kitchen/diner.

KITCHEN/DINER 16'2" x 11'1" (4.93 x 3.4)

A beautifully appointed white fitted kitchen featuring granite-effect worktops with tiled splashbacks, incorporating a ceramic hob and stainless steel sink drainer. There is an excellent range of base and drawer units, with matching wall cupboards over, built-in oven and spaces for a washing machine and fridge/freezer. Vinyl flooring and a large understairs storage cupboard provides additional practicality. There is a window to the rear aspect which enjoys pleasant views over the garden.

CLOAKROOM/W.C.

With a pedestal wash hand basin, tiled splashback, and a window to the rear aspect. The room is finished with practical vinyl flooring.

REAR HALLWAY

With a part glazed service door to the rear garden and this area also houses the oil boiler.

From the entrance hallway stairs rise to a first floor landing, which has a loft hatch to the roof space and doors to all three bedrooms and the bathroom.

BEDROOM ONE 14'6" x 8'11" (4.43 x 2.72)

With a window to the front aspect with a distant view to the sea.

BEDROOM TWO 12'5" x 9'6" (3.79 x 2.9)

With a window to the rear aspect.

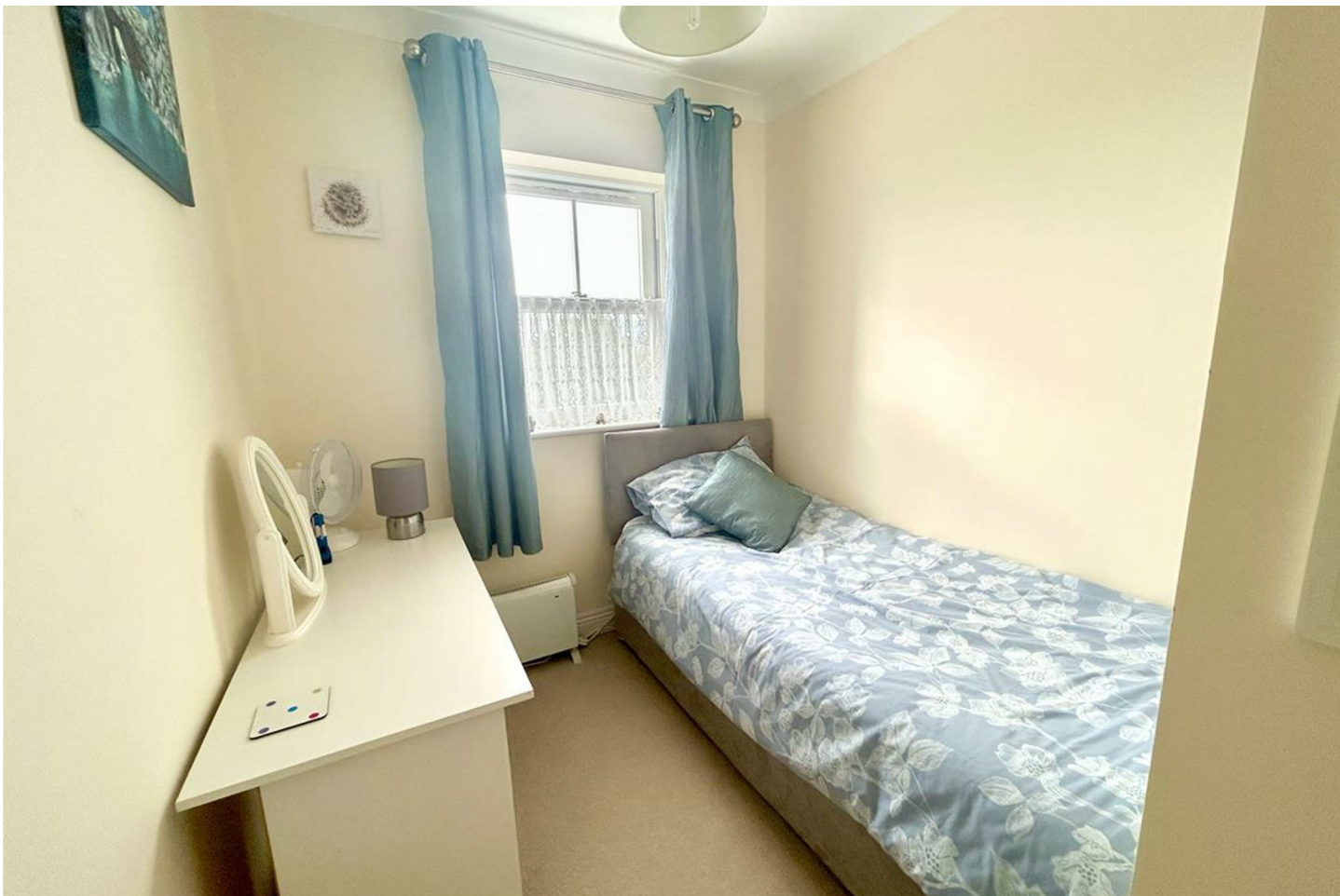
BEDROOM THREE 11'1" x 6'11" (3.39 x 2.11)

With a window to the front aspect which has distant views to the sea. There is a generous storage cupboard.

BATHROOM/SHOWER ROOM

Beautifully appointed and of generous proportions, the bathroom includes a panelled bath with tiled splashback and a separate glazed and tiled shower cubicle. There is a dual flush w.c. and a pedestal wash hand basin with tiled splashback, storage cupboard with mirrored front and light which incorporates a shaver socket. The room has a window to the rear aspect, a chrome ladder-style heated towel radiator, extractor fan and practical vinyl flooring.





OUTSIDE

To the front of the property is a hard-landscaped garden, enclosed by an attractive stone hedge and enjoying a westerly aspect – ideal for making the most of the afternoon and evening sunshine. To the rear, a brick-paved driveway provides parking and leads to the garage. The rear garden is neatly enclosed by fencing, offering a good degree of privacy and features a generous lawned area with shrubs and planted borders. The rear garden enjoys an easterly aspect and we are advised remains in sun for most of the day. There is an outside tap and a gate leads back to the rear parking area.

GARAGE 18'10" x 9'6" (5.75 x 2.9)

With a pitched roof, power, light and up and over door. There is a service door at the rear leading out onto the garden.

SERVICES

Mains water, electricity, drainage, oil fired central heating.

DIRECTIONS

As you enter The Lizard village, you will see the Terrace on the left hand side. Take the next left to go around to the rear of the property, where you can park.

MOBILE AND BROADBAND

To check the broadband coverage for this property please visit - <https://www.openreach.com/fibre-broadband>

To check the mobile phone coverage please visit - <https://checker.ofcom.org.uk/>

COUNCIL TAX

Council Tax Band Exempt.

ANTI-MONEY LAUNDERING

We are required by law to ask all purchasers for verified ID prior to instructing a sale

PROOF OF FINANCE - PURCHASERS

Prior to agreeing a sale, we will require proof of financial ability to purchase which will include an agreement in principle for a mortgage and/or proof of cash funds.

DATE DETAILS PREPARED.

9th October 2025.

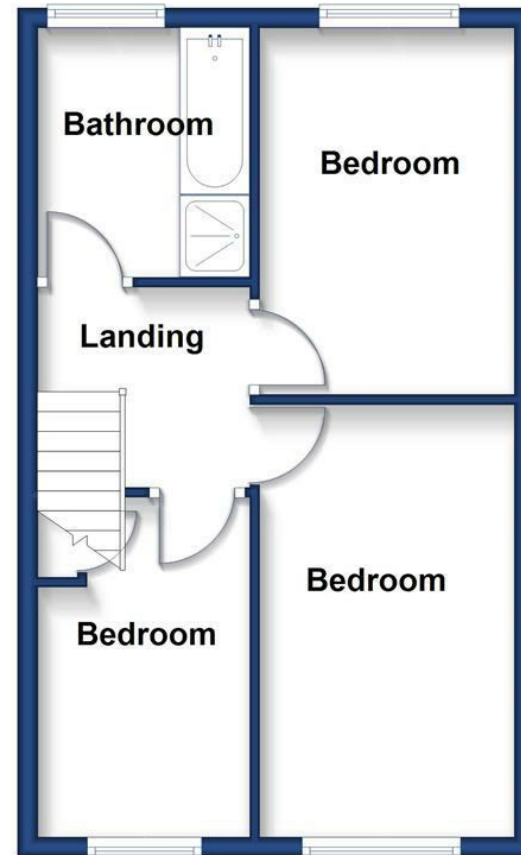




Ground Floor
Approx. 44.7 sq. metres (480.6 sq. feet)



First Floor
Approx. 39.4 sq. metres (423.8 sq. feet)



Total area: approx. 84.0 sq. metres (904.4 sq. feet)

Energy Efficiency Rating		Current	Potential
Very energy efficient - lower running costs			
(92 plus) A			
(81-91) B			
(69-80) C		75	80
(55-68) D			
(39-54) E			
(21-38) F			
(1-20) G			
Not energy efficient - higher running costs			
England & Wales		EU Directive 2002/91/EC	

These particulars are set out as a general outline in accordance with the Property Misdescriptions Act (1991) only for the guidance of intending purchasers or lessees, and do not constitute any part of an offer or contract. Details are given without any responsibility, and any intending purchasers, lessees or third parties should not rely on them as statements or representations of fact, but must satisfy themselves by inspection or otherwise as to the correctness of each of them. We have not carried out a structural survey and the services, appliances and specific fittings have not been tested. All photographs, measurements, floor plans and distances referred to are given as a guide only and should not be relied upon for the purchase of carpets or any other fixtures or fittings. Gardens, roof terraces, balconies and communal gardens as well as tenure and lease details cannot have their accuracy guaranteed for intending purchasers. Lease details, service ground rent (where applicable) are given as a guide only and should be checked and confirmed by your solicitor prior to exchange of contracts.



Christophers Estate Agents

5 Wendron Street, Helston, TR13 8PT

01326 565566 | property@christophers.uk.com | christophers.uk.com

CHRISTOPHERS
ESTATE AGENTS