



NEWINGTON  
LONDON

1 Bedrooms

Apartment

Located in London

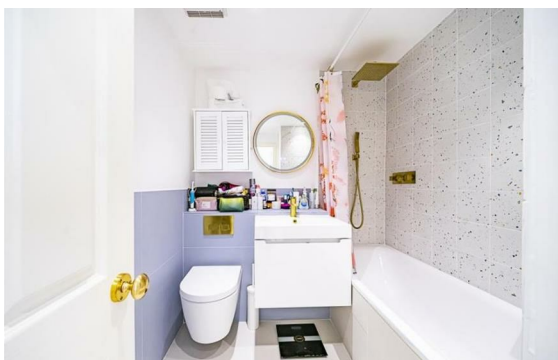
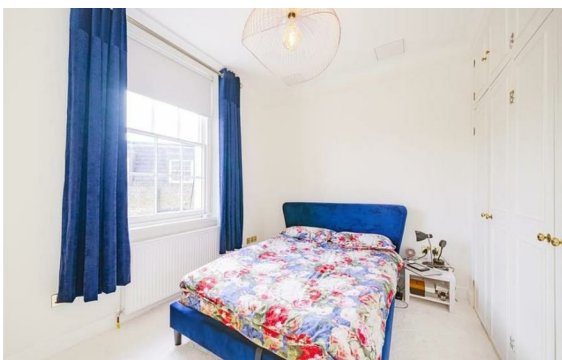
£995 Per Month



info@newingtonstates.com

<http://www.newingtonstates.com>

020 7724 2233



Set within an elegant building with 24-hour porterage, this modern one-bedroom apartment is positioned on the second floor and benefits from lift access.

The home offers an open-plan kitchen and living area, a comfortable bedroom, a contemporary bathroom, and wood flooring throughout.

EPC rating: C

### Energy Efficiency Rating: C

Agents Note: Whilst every care has been taken to prepare these particulars, they are for guidance purposes only. All measurements are approximate and are for general guidance purposes only and whilst every care has been taken to ensure their accuracy, they should not be relied upon and potential buyers/tenants are advised to recheck the measurements.

# NEWINGTON LONDON

60 Upper Montagu Street

London

W1H 1SN

020 7724 2233

[info@newingtonstates.com](mailto:info@newingtonstates.com)

<http://www.newingtonstates.com>