

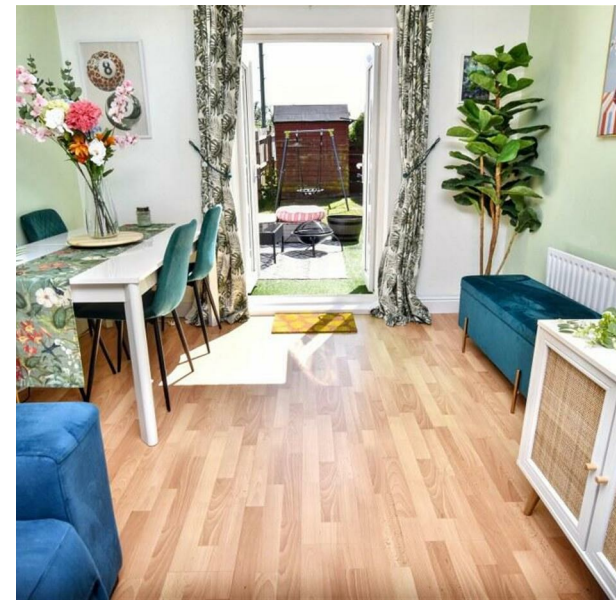
101 Clydesdale Avenue, Paisley, PA3 4JR

Offers Over £219,995

EPC Rating: C Council Tax Band: D



PEACHTREE
PROPERTY



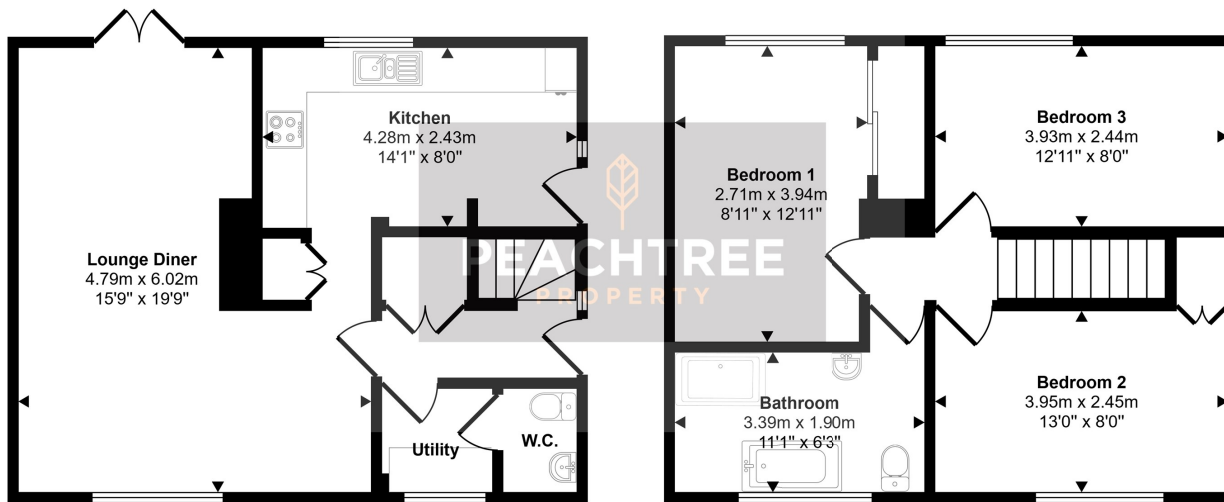
Peachtree Property are delighted to welcome to the market this stunning property nestled on the charming Clydesdale Avenue in Paisley, this delightful three-bedroom house offers a perfect blend of comfort and practicality. Spanning an impressive 980 square feet, the property boasts a well-designed layout that is ideal for families or those seeking extra space.

Upon entering, you are welcomed into a spacious reception room, perfect for entertaining guests or enjoying quiet evenings with loved ones. The natural light that floods this area creates a warm and inviting atmosphere. The house features three generously sized bedrooms, providing ample room for relaxation and personal space.

With two bathrooms, morning routines will be a breeze, ensuring convenience for all occupants. The property, built in 1960, retains a sense of character while offering the potential for modernisation to suit your personal taste.

28 Hairst Street Hairst St
 Renfrew
 PA4 8QY
 0141 577 1111
 info@peachtreeproperty.co.uk

Approx Gross Internal Area
 91 sq m / 984 sq ft



Ground Floor
 Approx 46 sq m / 496 sq ft

First Floor
 Approx 45 sq m / 488 sq ft

This floorplan is only for illustrative purposes and is not to scale. Measurements of rooms, doors, windows, and any items are approximate and no responsibility is taken for any error, omission or mis-statement. Icons of items such as bathroom suites are representations only and may not look like the real items. Made with Made Snappy 360.

Energy Efficiency Rating		Current	Potential
Very energy efficient - lower running costs			
(92 plus)	A		
(81-91)	B		
(69-80)	C		
(55-68)	D	71	79
(39-54)	E		
(21-38)	F		
(1-20)	G		
Not energy efficient - higher running costs			
Scotland		EU Directive 2002/91/EC	