



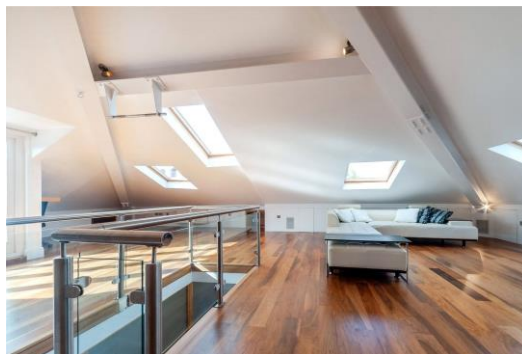
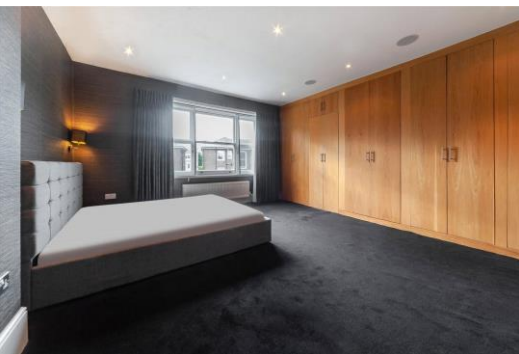
Buckland Crescent

Belsize Park, NW3

£5,500 per month
(£1,269.23 per week)

A truly magnificent 3 bedroom duplex apartment in Belsize Park. The property benefits from sound surround system, wood floors, plenty storage, roof terrace, loft style reception room with deep storage space. Accommodation comprises approximately 2375 sq ft as follows: double loft style reception room with roof terrace off, open fully fitted kitchen, dining room, master bedroom with fully fitted wardrobes and en-suite bathroom with and walk-in shower with under floor heating, double bedroom with fully fitted wardrobes and en-suite shower room, third bedroom/large study with wardrobes, family shower room with utility area. Located close to Swiss Cottage Underground (Jubilee Line) and Belsize Park. (Northern Line).

CHESTERTONS



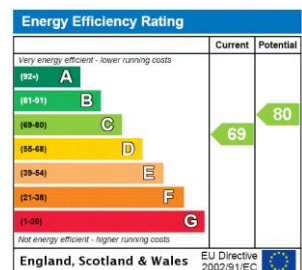
Buckland Crescent

Belsize Park, NW3

- Spacious Duplex Apartment on Top 2 Floors of Beautiful Period Building
- 3 Bedrooms, 3 Bathrooms, Loft-Style Reception Room, Fitted Kitchen with Dining Room
- Wood Floors, Roof Terrace, Split Level, Great Views, High Specification
- Situated on a Popular Road Close to Belsize Park (Northern Line) and Swiss Cottage (Jubilee Line)



Minimum Term: 12 months
Deposit Required: £7,615.38
Local Authority: London Borough Of Camden
Council Tax Band: G
EPC Rating: C
Furnished, Part Furnished, Unfurnished

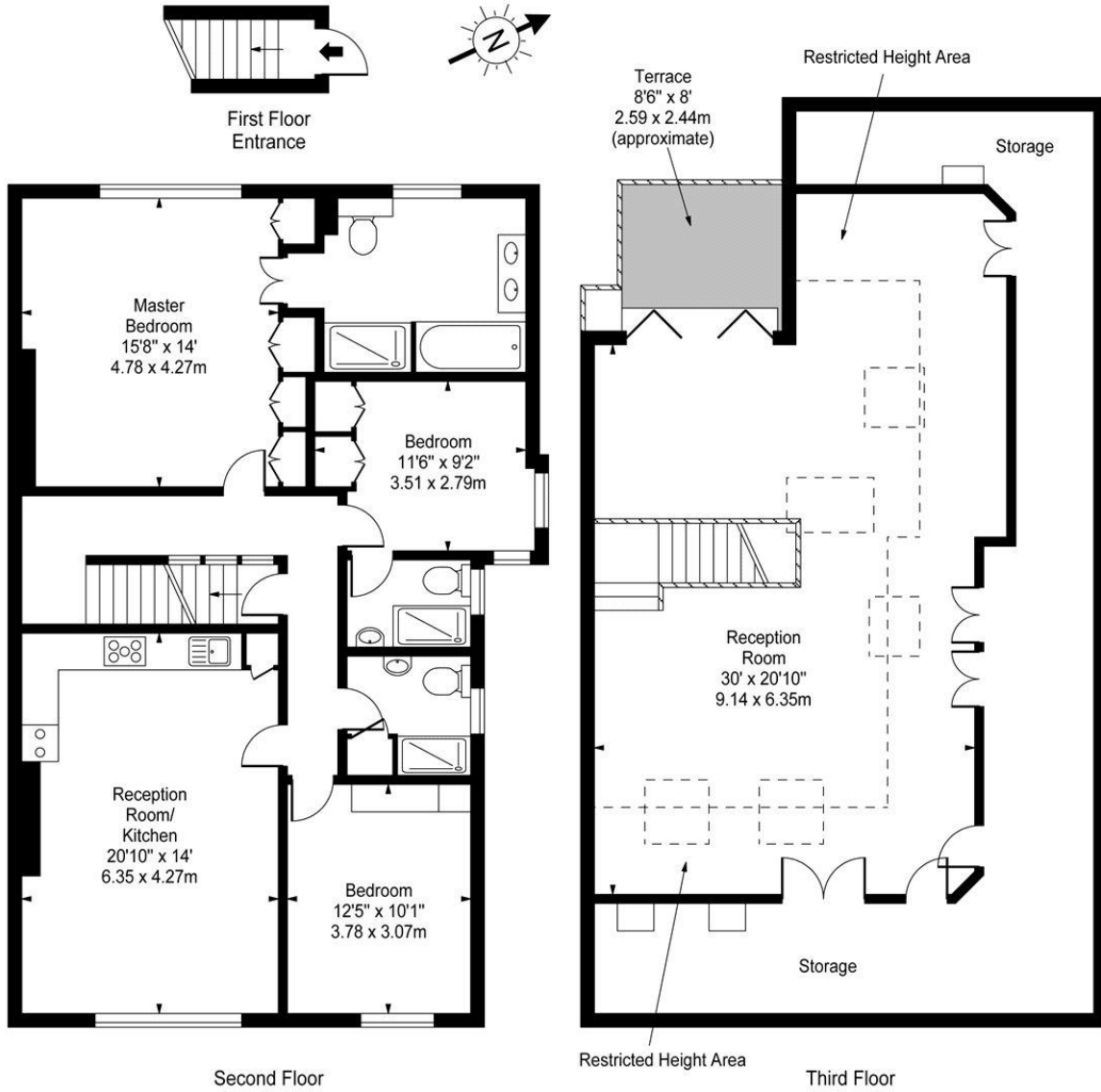


Chestertons Hampstead Lettings

55-56 Hampstead High Street
Hampstead
London
NW3 1QH
hampsteadlettingsusers@chestertons.co.uk
02077941125
chestertons.co.uk

Additional tenant charges apply (fees apply to non-AST tenancies only)
Tenancy Agreement Fee: £300
References per Tenant/Guarantor: £60
Inventory check (approx. £100 – £250 inc. VAT)
chestertons.co.uk/property-to-rent/applicable-fees

**Buckland Crescent,
Belsize Park, NW3**



Approx Gross Internal Area 2375 Sq Ft - 220.64 Sq M
(Including Restricted Height Area & Storage)

For Illustration Purposes Only - Not To Scale
www.goldlens.co.uk
Prepared for Chestertons
Ref. No. 007967N