



## Kingston Road, SW19

£450,000

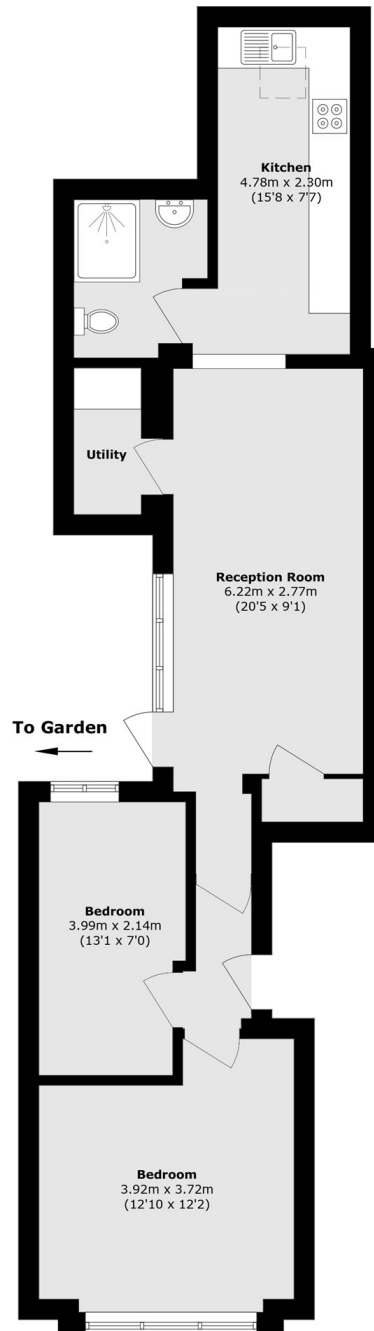
A two double bedroom, one bathroom, ground floor garden flat. The property is sold with no onward chain and have a new lease upon completion.

Conveniently situated close to Wimbledon Town Centre, just moments away from Wimbledon Tube and Overground Station and a great range of restaurants and bars.

### Features

- Two Double Bedrooms
- Private Garden
- Modern Apartment
- New Lease
- Over 650 Square Feet
- No Onward Chain

# Kingston Road, London, SW19



Total area (approx.): 61.2 sq. m (658.7 sq. ft)