



CROMWELL ROAD, SW7

£600,000

Long lease
Recently refurbished
Large reception room
South Kensington location
Separate kitchen
Storage

@marshandparsons
marshandparsons.co.uk

MARSH &
PARSONS



ABOUT THE PROPERTY

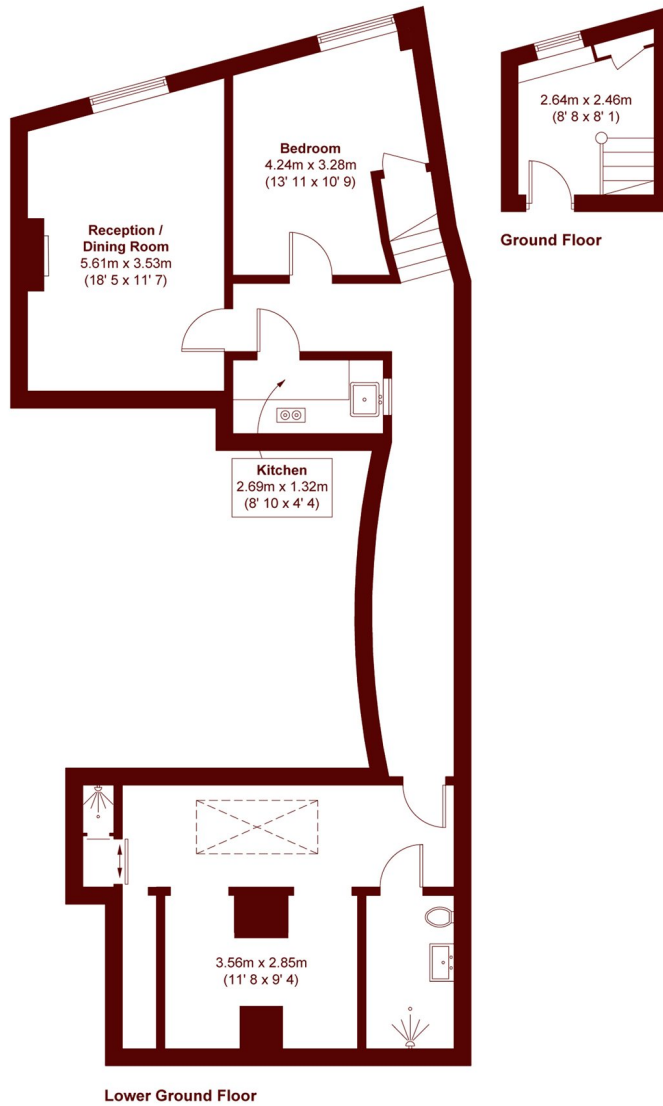
A beautifully proportioned and exceptionally spacious one-bedroom apartment set on the prestigious Cromwell Road in the heart of SW7, one of London's most desirable and well-connected locations.

Perfectly positioned, the apartment is within easy reach of South Kensington, Gloucester Road, and a wealth of world-renowned amenities, including museums, restaurants, and boutique shops. Excellent transport links are nearby, making it easy to access the City, West End, and beyond.

This outstanding apartment offers an exceptional opportunity to enjoy refined London living, combining impressive proportions with an unbeatable SW7 address.



STEP INSIDE CROMWELL ROAD



APPROX. GROSS INTERNAL FLOOR AREA
957 SQFT / 88.9 SQM

South Kensington
020 7590 0800

Energy Rating: C We aim to make our particulars both accurate and reliable. However, they are not guaranteed; nor do they form part of an offer or contract. If you require clarification on any points then please contact us, especially if you're traveling some distance to view. Please note that appliances and heating systems have not been tested and therefore no warranties can be given as to their good working order

MARSH &
PARSONS