



HEARNES

WHERE SERVICE COUNTS

Ashley Drive South, Ashley Heath, BH24 2JU

A simply stunning, private and established plot (approaching 0.5 acres), extensive parking and a double garage, are just a few features of this impeccably maintained, stylish family home, that offers around 2400 sq ft of spacious and flexible accommodation.

Positioned within the highly regarded Ashley Heath area of Ringwood and around 800 metres from the Ringwood Forest, Castleman Trail and local shop, this impressive property is perfect for a growing family or anyone needing the potential for a multi-generational home.

The first floor accommodation comprises two versatile bedrooms, both with en-suite facilities, one with a dressing room.

The ground floor lies host to two further bedrooms, the master with a large walk-through dressing room and crisp white, 4-piece en-suite bath/shower room, a delightful, a contemporary style family bathroom, cosy sitting room with log burner and adjoining dining room.

The kitchen/breakfast room has been designed to make the best use of the space on offer and is fitted in a range of shaker style units with contrasting worktops and splashbacks. Built-in appliances include a double oven, combination microwave, dishwasher, hob and extractor/filter canopy. Adjoining this space is a delightful seating area with peaceful garden views and access.

The gardens are accessed by doors from the kitchen/breakfast room and sitting room. They have been carefully planned and designed to be easy to maintain with year round colour and texture. A decked terrace adjoins the property and is the perfect spot to sit and unwind at the end of a day.

To the front is a gravelled drive providing extensive off road parking. The drive in turn leads to a double garage with remotely operated up and over door.

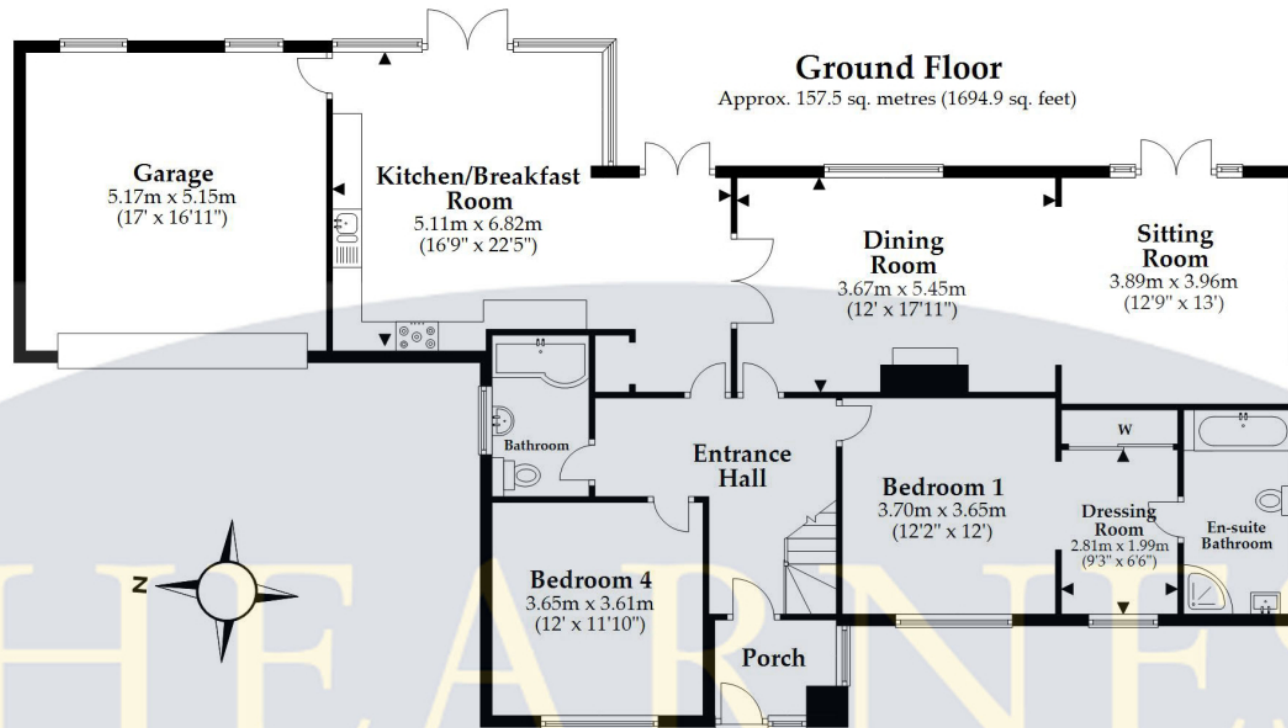
Local Authority: Dorset

Council Tax Band: F

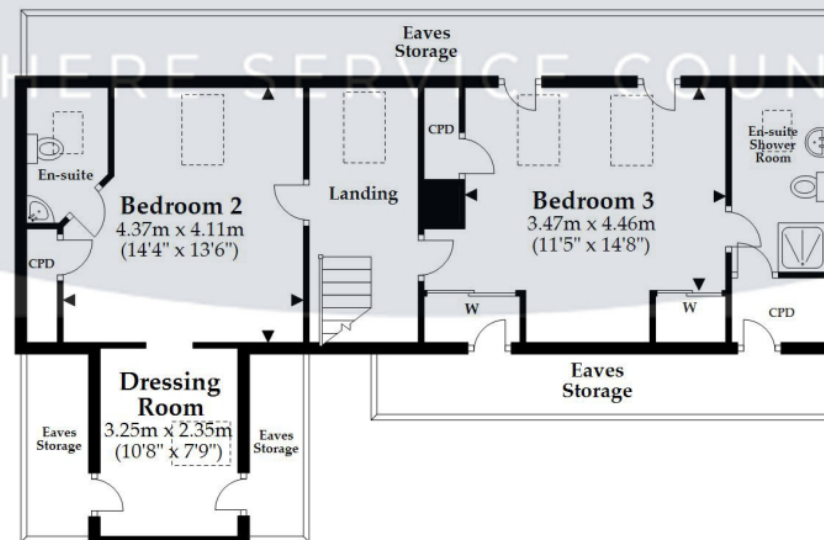
Energy Performance Certificate (EPC): Rating







First Floor
Approx. 68.2 sq. metres (734.0 sq. feet)



Total area: approx. 225.7 sq. metres (2428.9 sq. feet)

This plan is not to scale and is for general guidance only. LJT Surveying Ltd Ringwood







www.hearnes.com

52-54 High Street, Ringwood, Hampshire

Tel : Email : anthony@hearnes.com

OFFICES ALSO AT: BOURNEMOUTH, FERNDOWN, POOLE & WIMBORNE