



## Leman Street, E1

£1,150,000

 2  1  2  B

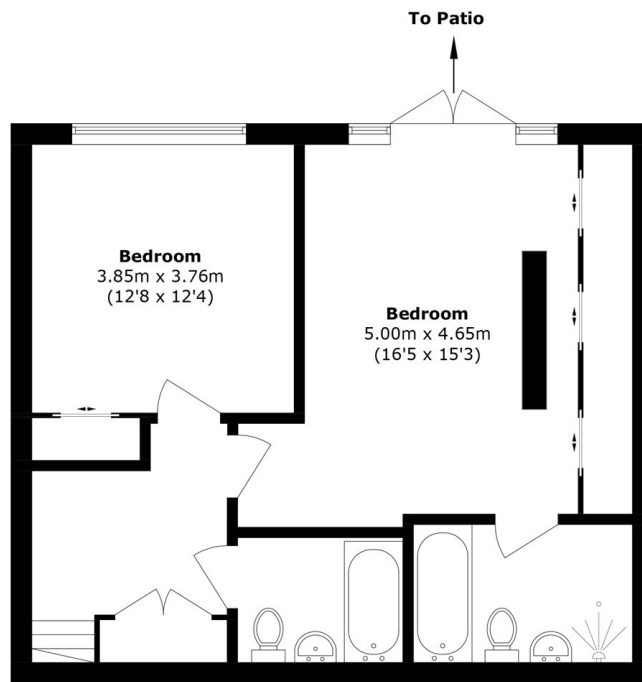
- Two Bedroom Apartment
- Two Bathrooms
- Private Terrace
- Residents Facilities
- 24 Hour Concierge
- Chain Free



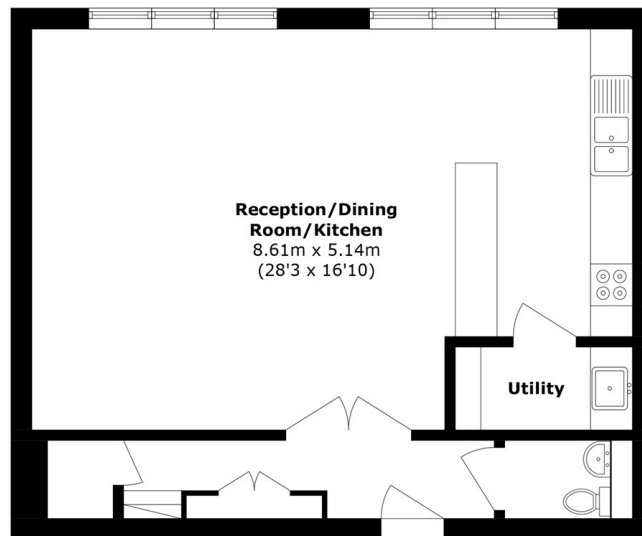
We're delighted to offer this impressive 1,399 sq.ft home to the market, set within the highly sought-after development of Sterling Mansions. Features to include a large private terrace, two generous double bedrooms, resident facilities and offered on a chain free basis.

Aldgate East Station is just 0.2 miles from Sterling Mansions, offering excellent links around the City.





**Lower Ground Floor**



**Ground Floor**

Total area (approx.): 124.4 sq. m (1,399.0 sq. ft)

35A Wapping High Street,  
London, E1W 1NR  
020 7665 5589  
ea2group.com