



Living
made
better

Tilly Court
Canning Town, E16 1GF



Asking Price £285,000

Tilly Court, Canning Town, E16 1GF

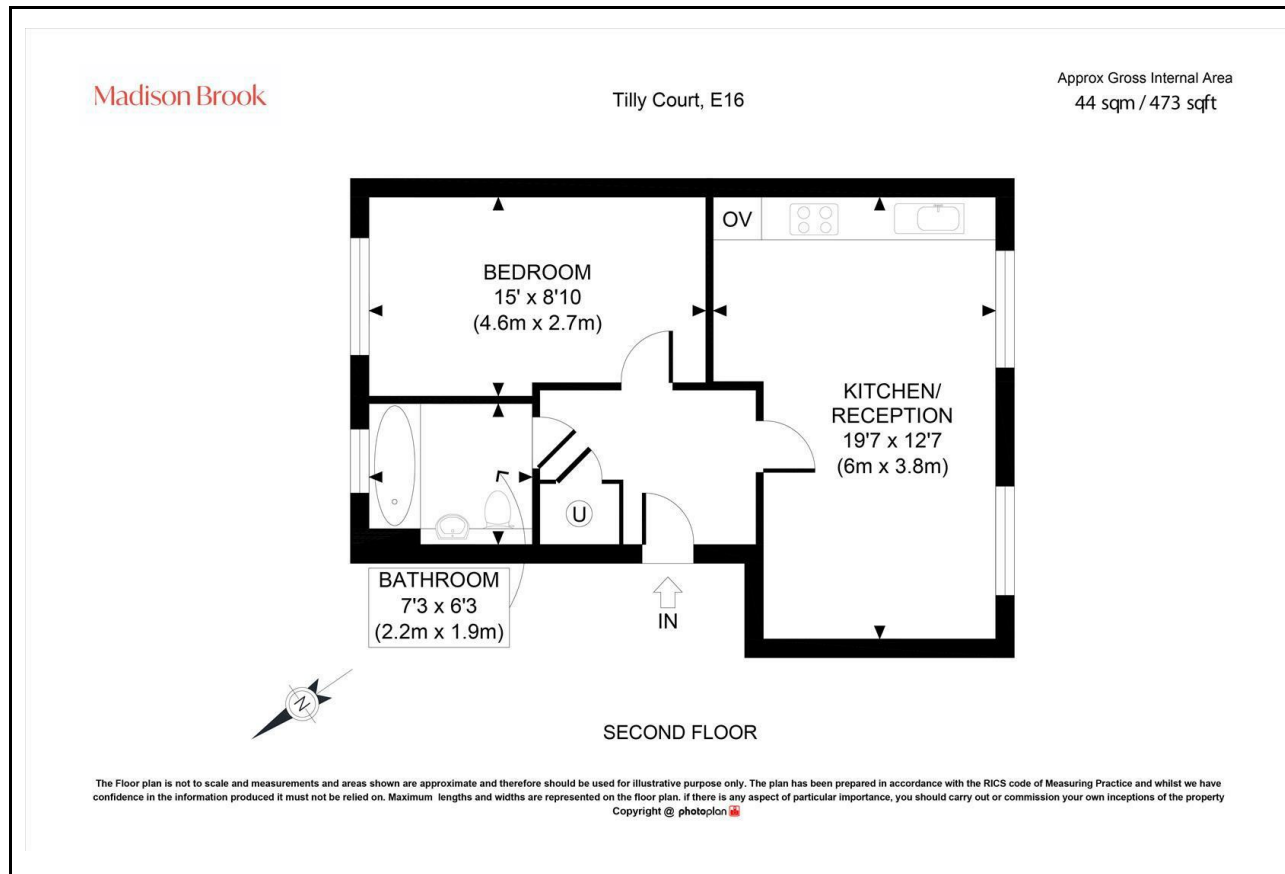
Madison Brook

Property Summary

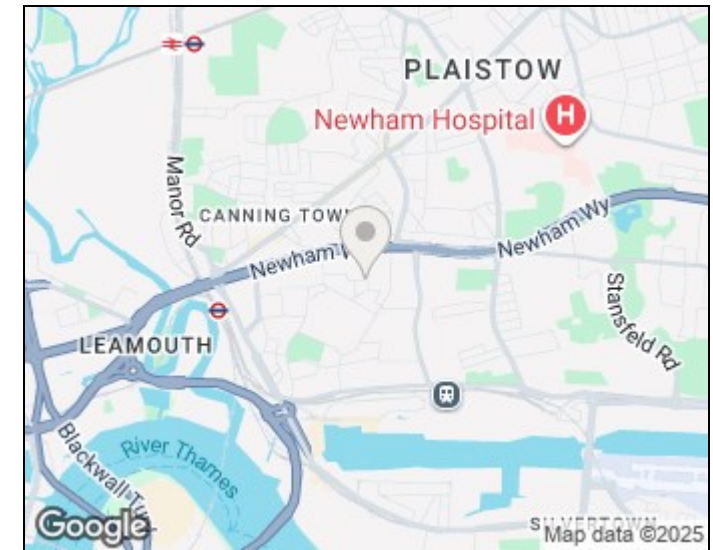
This well-presented second-floor one-bedroom apartment in Tilly Court, E16, offers 473 sq. ft. of bright and versatile living space. Featuring elevated high ceilings, a spacious open-plan reception with a modern fitted kitchen, a generously sized double bedroom, and a stylish bathroom, the property also benefits from allocated parking. Ideally located moments from Canning Town Underground Station and the vibrant Hallsville Quarter with its array of shops, cafés, and amenities, this home provides the perfect blend of comfort and convenience.

Service charge: £1,800 pa | Ground rent: £200 pa | Lease: 137 years remaining

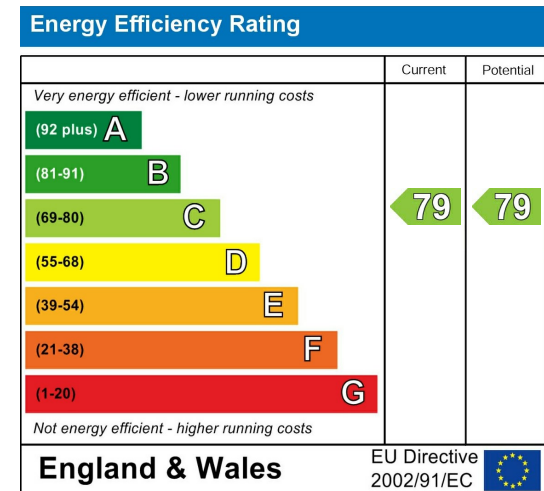
Floorplan



Area Map



Energy Efficiency Graph



These particulars, whilst believed to be accurate are set out as a general outline only for guidance and do not constitute any part of an offer or contract. Intending purchasers should not rely on them as statements of representation of fact, but must satisfy themselves by inspection or otherwise as to their accuracy. No person in this firm's employment has the authority to make or give any representation or warranty in respect of the property.

Unit B 20 Western Gateway, Royal Victoria
Dock, London, E16 1BS
Tel: 020 3946 6000 Email:
docklands@madisonbrook.com
<https://madisonbrook.com/>