



29 Carlile Hill

Hemlington, Middlesbrough, TS8 9SL

Offers in excess of £270,000

A PREMIUM STANDARD FOUR BEDROOM DETACHED PROPERTY OFFERING SPACIOUS ACCOMMODATION THROUGHOUT WITH THE BENEFIT OF TWO ENSUITE SHOWER ROOMS TO THE MAIN BEDROOMS, FURTHER SUPPLEMENTING A FAMILY BATHROOM AND A DOWNSTAIRS CLOAKROOM. THE PROPERTY ALSO HAS A MODERN KITCHEN WITH INTEGRATED APPLIANCES, A CONSERVATORY, MODERN NEUTRAL DECORATION THROUGHOUT WHICH ACCENTUATES THE SPACE AND COMPLEMENTS THE NATURAL LIGHT WITHIN. THE PROPERTY IS SET ON A GENEREROUSLY SIZED PLOT WITH AMPLE PARKING AND AN INTEGRATED GARAGE TO THE FRONT AND A TWO TIER GARDEN TO THE REAR WHICH IS BEAUTIFULLY DESIGNED AND INCLUDES A SUMMER HOUSE, EXTERNAL STORE AND A WATER FEATURE POND. WITH OPEN VIEWS TO THE REAR PROVIDING PRIVACY TO THE REAR GARDEN THE PROPERTY IS BOUND TO APPEAL TO A WIDE RANGE OF PURCHASERS WHO WISH TO FIND A PROPERTY THAT ALLOWS THEM TO MOVE STRAIGHT IN WITHOUT THE NEED FOR REFURBISHMENT OR UPGRADING. THE PROPERTY IS IDEALLY POSITIONED CLOSE TO THE A174, THE A19 AND A66 AND OFFERS EASE OF ACCESS TO MIDDLESBROUGH TOWN CENTRE. A PERFECT FAMILY HOME WHICH DEMANDS AN INTERNAL VIEWING IN ORDER FOR THE QUALITY AND SIZE TO BE APPRECIATED.

- A premium detached family residence
- 4 Bedrooms with 2 En-Suites and a further groundfloor cloakroom
- Integral Garage and double width driveway
- Utility Room
- Conservatory
- Stunning landscaped garden to the rear with ample storage and eye-catching numerous features

Viewing

Please contact our Progression Property Office on 01642 063352 if you wish to arrange a viewing appointment for this property or require further information.



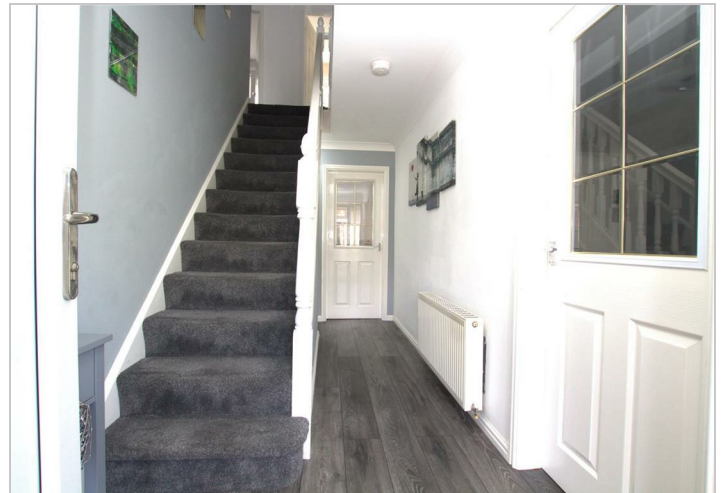
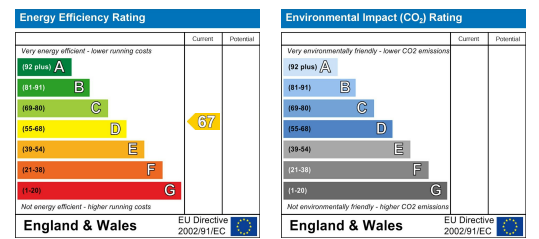
Floor Plan



Area Map



Energy Efficiency Graph



These particulars, whilst believed to be accurate are set out as a general outline only for guidance and do not constitute any part of an offer or contract. Intending purchasers should not rely on them as statements of representation of fact, but must satisfy themselves by inspection or otherwise as to their accuracy. No person in this firm's employment has the authority to make or give any representation or warranty in respect of the property.

329 Linthorpe Road, Middlesbrough, TS5 6AA

Tel: 01642 063352 Email: info@progression-lettings.co.uk <https://www.progression-property.co.uk>