



Tower Court , Westcliff-On-Sea
£1,350 Per Month

home.

12 Tower Court

Westcliff-On-Sea
SS0 7QQ



- Spacious Second Floor Apartment
- Two Bedrooms
- South Facing Balcony Offering Amazing Estuary Views
- Lounge & Separate Kitchen
- Within Walking Distance To Seafront, Cliff Gardens & Mainline Railway Station

Interested?

Give us a call or request a viewing below. Our team are always on-hand and willing to help you.

01702 480 033



Home Estate Agents are delighted to offer for rental this spacious two bedroom unfurnished second floor apartment. Within walking distance to a c2c railway line offering excellent connections to London Fenchurch Street. This property boasts close proximity to the seafront and benefits from superb estuary views from a private south facing balcony.

This spacious accommodation comprises of lounge, kitchen, two bedrooms and modern bathroom and views over the Estuary. The apartment is ideal for travelling on the c2c railway line and located within walking distance to the seafront and cliff gardens.





Entrance

Entering through communal doors, this property benefits from lifts and stairs to the second floor.

Lounge

15'4 X 14'10

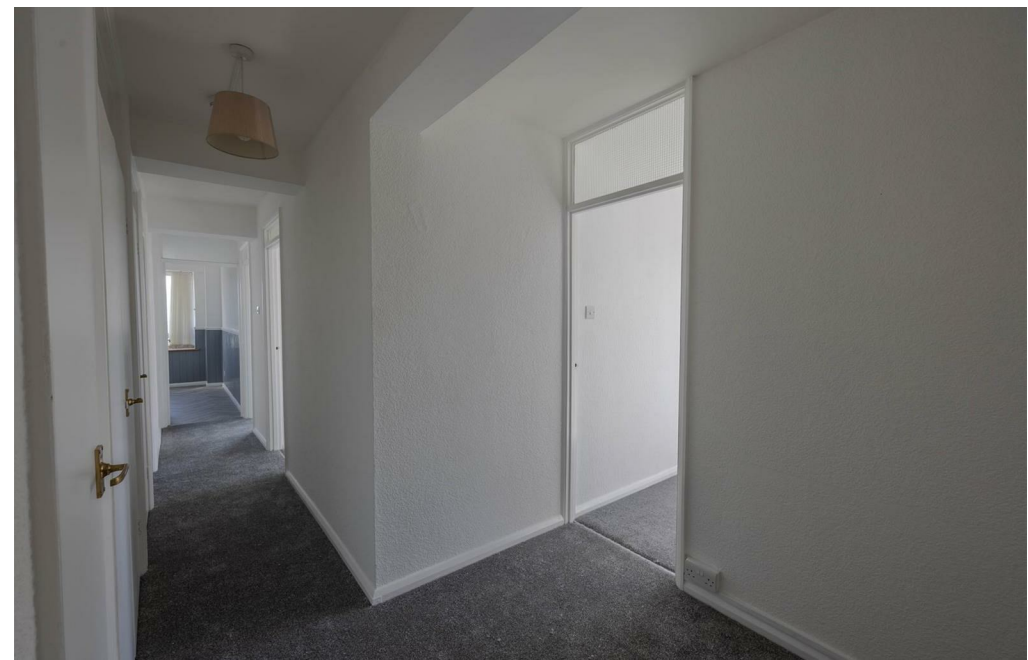
With sliding patio doors leading to a south facing balcony, TV point.

Kitchen

11'4 X 8'10

With eye and base level units, wall mounted display cabinet, rolled Grey work surface, Inset stainless steel sink with chrome mixer tap, integrated oven, touch screen hob integrated into the worktop with four rings & above extractor fan, washing machine, space for integrated or undercounter fridge.





Bedroom One

13'8 x 10'6

With electric panel heater & large window with estuary views.

Bedroom Two

11' x 7'6

Electric panel heater & the second bedroom has a window with estuary views.

Bathroom

Bath with shower over, new low level WC, electric radiator.

Balcony

Private south facing balcony will wonderful estuary views.

Parking

Parking is available on a "first come first served basis" or permit parking (via Southend City Council).

Agents Note

After the 01st February 2016 all applicants over the age of 18 years old will need to undergo "Right to rent" checks. Please note that some properties may be advertised using images and details which were taken in the past and therefore a viewing is the always strongly recommended. After 01st June 2019, the tenancy deposit will be the equivalent of five weeks rent (subject to the monthly rental amount). The tenancy deposit is calculated at the monthly rental amount, multiplied by 12 (number of months in the year), divided by 52 (number of weeks in the year), multiplied by 5.



Property Details

2 Bedrooms
1 Bathrooms
1 Reception Rooms
Flat

Approx. sq ft
EPC band: D
Tenure:
Council Tax Band: D

£1,350 Per Month

Interested?

Give us a call or request a viewing below. Our team are always on-hand and willing to help you.

[01702 480 033](tel:01702480033)

home.



Scan QR code for
our Instagram

homeofleigh.com

The Old Bank, 26 Broadway
Leigh-on-Sea, SS9 1AW

01702 480 033

