



Beadon Road, W6

£5,500 Per calendar month

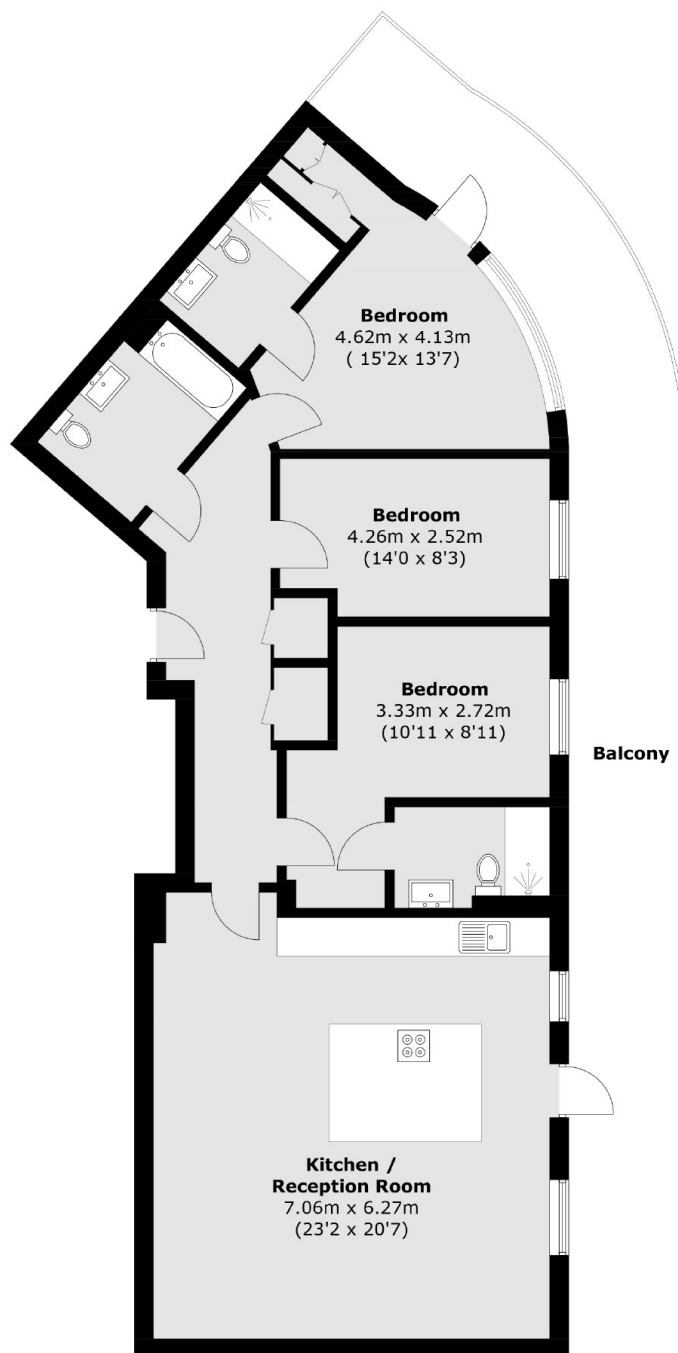
The stunning apartment in central Hammersmith has a spacious, open plan kitchen and reception room, with a vast wraparound balcony. The master bedroom has stunning views, an excellent dressing area and en-suite bathroom. There are two further double bedrooms (one also en-suite) and a third family bathroom. This apartment would make an excellent home.

The development, which includes a concierge and gym, is in central Hammersmith, right next to the tube station and within close proximity to the amenities of Hammersmith Broadway.

Features

- Three Bedrooms
- Three Bathrooms
- Wraparound Balcony
- Ninth Floor
- 24hr Concierge
- Resident's Gym

Beadon Road, London, W6



Ninth Floor

Total area (approx.): 110.8 sq. m (1,192.6 sq. ft)

Balcony (approx.): 39.9 sq. m (429.4 sq. ft)