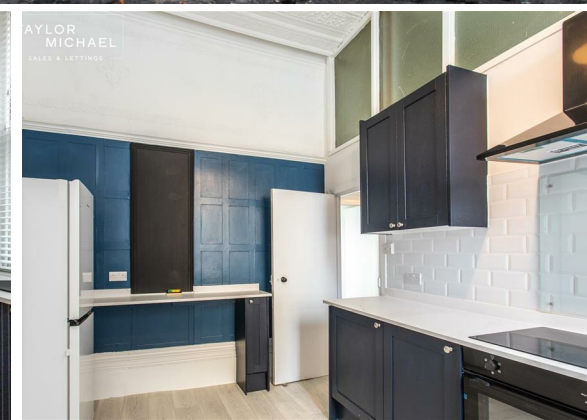
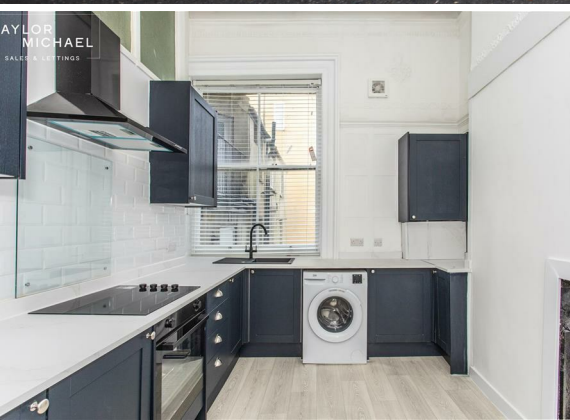




1 Bed
Flat
located in

£1,900



TAYLOR
MICHAEL

Brunswick Terrace, Hove BN3 1HL

Approximate Gross Internal Area = 78.9 sq m / 849 sq ft



First Floor

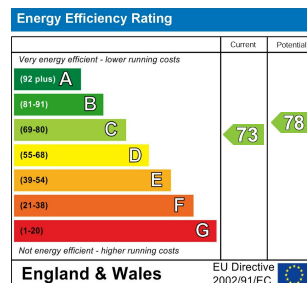
Illustration for identification purposes only, measurements are approximate, not to scale.
Imageplansurveys @ 2026

DIRECTIONS

CONTACT

62 Church Road
Hove
East Sussex
BN3 2FP

E: lettings@taylormichael.agency
T: 01273 600100
<https://taylormichael.agency/>



TAYLOR
MICHAEL