

SCARSDALE STUDIOS, W8





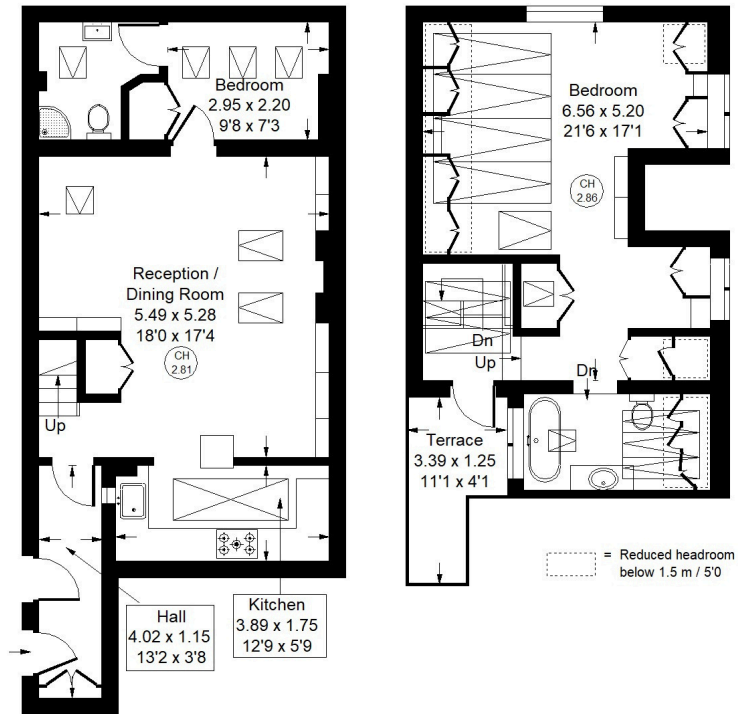
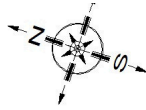
Scarsdale Studios, W8

A simply stunning two double bedrooms, two ensuite bathrooms, freehold house located in the heart of Stratford Village in Kensington, W8. This property benefits from a wonderful open-plan living space with wood floors, modern country style kitchen and a private roof terrace. With a proven rental return, and low outgoings, the property also benefits from the right to RBKC parking permits. With extension potential possible under permitted development rules, this charming house owned by an interior designer offers an excellent opportunity to acquire a house with significant scope to expand.

Scarsdale Studios is located just off Stratford Road, conveniently positioned for Stratford Village's popular restaurants, bakeries and green grocers. Earls Court and Kensington High Street tube stations are a short walking distance from the property.



Approx. Gross Internal Area
= 93.6 sq m / 1,008 sq ft



Ground Floor and First Floor



Scarsdale Studios, W8

Local Authority - Royal Borough of Kensington & Chelsea

- Two Double Bedrooms
- High Ceilings and Wooden Floors
- Private Roof Terrace
- Quiet Mews
- EPC rating: D
- Council tax band: F



Whilst every attempt has been made to ensure the accuracy of the floor plan, measurements are approximate and not to scale. No guarantee is given on the total square footage of the property quoted on the plan. Figures given are for guidance. Plan is for illustration purposes only, not to be used for valuations.