



CANTELOWES ROAD, NW1

£650,000

Private Garden
Two Double Bedrooms
No Onward Chain
Separate Kitchen
Private Entrance
Period Conversion

@marshandparsons
marshandparsons.co.uk

MARSH &
PARSONS



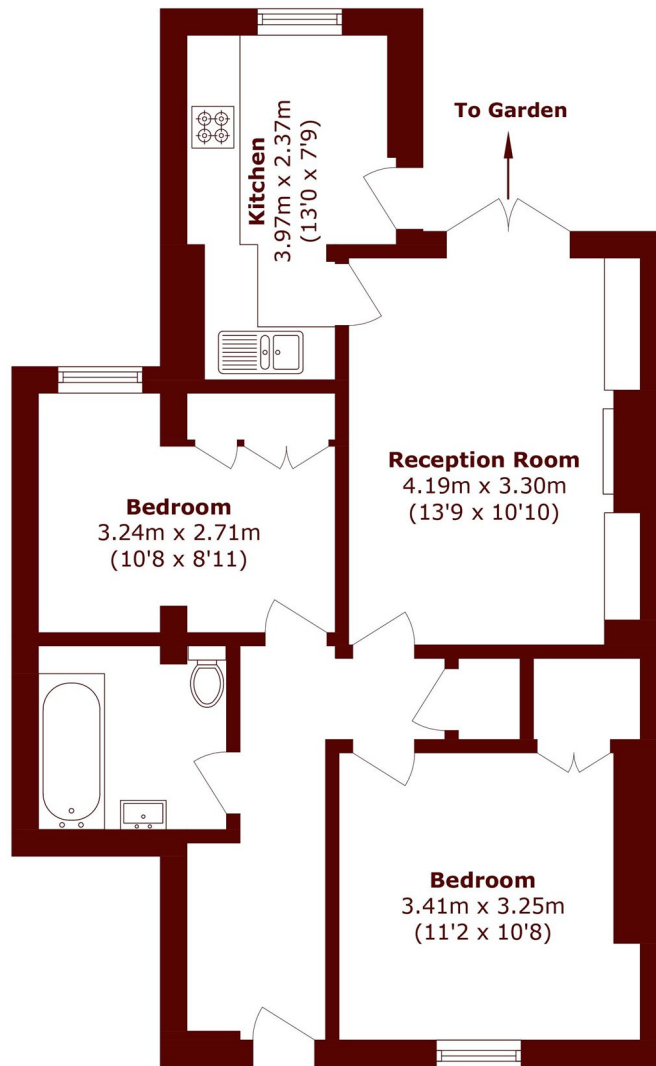
ABOUT THE PROPERTY

This well-proportioned two-bedroom ground-floor apartment is part of an impressive Victorian conversion and features a spacious reception room, separate kitchen, two double bedrooms, a bathroom, and ample storage. It also benefits from a private south-west facing garden.

Canteloves Road is a quiet, leafy street lined with imposing period properties. It's just minutes on foot or by bus from the shops, restaurants, and excellent transport links of Camden Town, Kings Cross/St Pancras, Kentish Town, and Caledonian Road.



STEP INSIDE CANTELOWES ROAD



Total area (approx.): 59.6 sq. m (641.5 sq. ft)

Camden
020 7244 2200

Energy Rating: C We aim to make our particulars both accurate and reliable. However, they are not guaranteed; nor do they form part of an offer or contract. If you require clarification on any points then please contact us, especially if you're traveling some distance to view. Please note that appliances and heating systems have not been tested and therefore no warranties can be given as to their good working order

MARSH &
PARSONS