



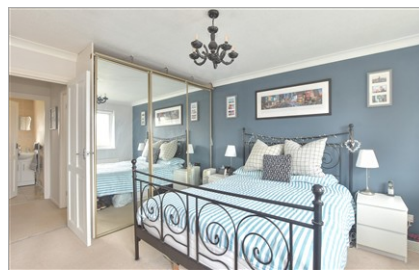
**Price**  
**£325,000**

**Freehold**

2x  1x  1x 

**Bridge Close, Burgess  
Hill, Burgess Hill, West  
Sussex, RH15**

**cubitt&west**  
Helping you move forwards



## Main features

- Ideal first time buyers
- Cul-de-sac location
- All bedrooms are doubles
- Close to local Co-Op
- Secluded rear garden

## Accommodation

### GROUND FLOOR

Porch

Lounge: 13'9 x 13'8 (4.19m x 4.17m)

Kitchen/Dining Room: 13'9 x 11'4 (4.19m x 3.46m)

### FIRST FLOOR

Landing

Bedroom 1: 13'4 x 10'4 (4.07m x 3.15m)

Bedroom 2: 11'11 x 7'1 (3.63m x 2.16m)

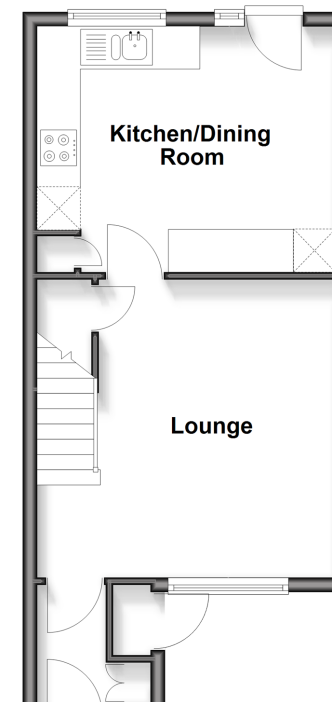
Bathroom

### OUTSIDE

Front & Rear Gardens

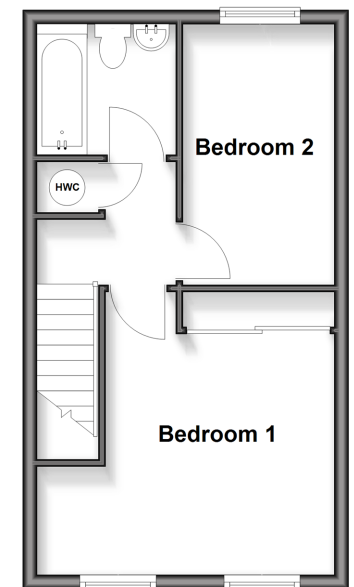
### Ground Floor

Approx. 34.7 sq. metres (373.3 sq. feet)



### First Floor

Approx. 31.9 sq. metres (343.7 sq. feet)



Call Haywards Heath - 01444 411132 ■ [cubittandwest.co.uk](http://cubittandwest.co.uk)

■ Legal advice should be taken to verify fixtures/fittings, planning, alterations and/or lease details

■ Appliances & services are untested, dimensions are approximate and floor plans are not to scale

