



6 Abercrombie Street, Newbold, Chesterfield, S41 7LW

Offers In The Region Of £165,000

- Grade II listed building
- Ideal for someone looking for a Character property
- Great location close to Chesterfield town centre
- Offered for sale with no chain
- 2 Bedrooms plus an additional room
- Modern combi boiler
- Communal gardens to the rear and garden to the front
- Open plan layout downstairs
- New electrics



Abercrombie St, S41

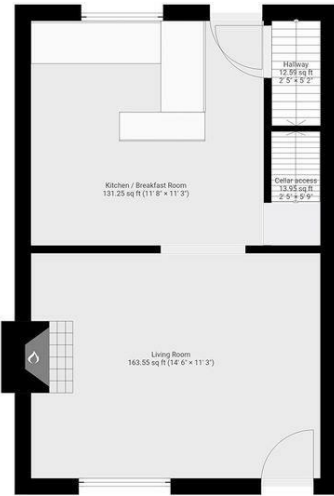
DETAILS
Total area: 854.23 sq ft

Square Box Media
info@squareboxmedia.com
www.squareboxmedia.com

This floorplan is provided without any warranty. The actual size of dimensions may vary and this floorplan is intended for illustrative purposes only.

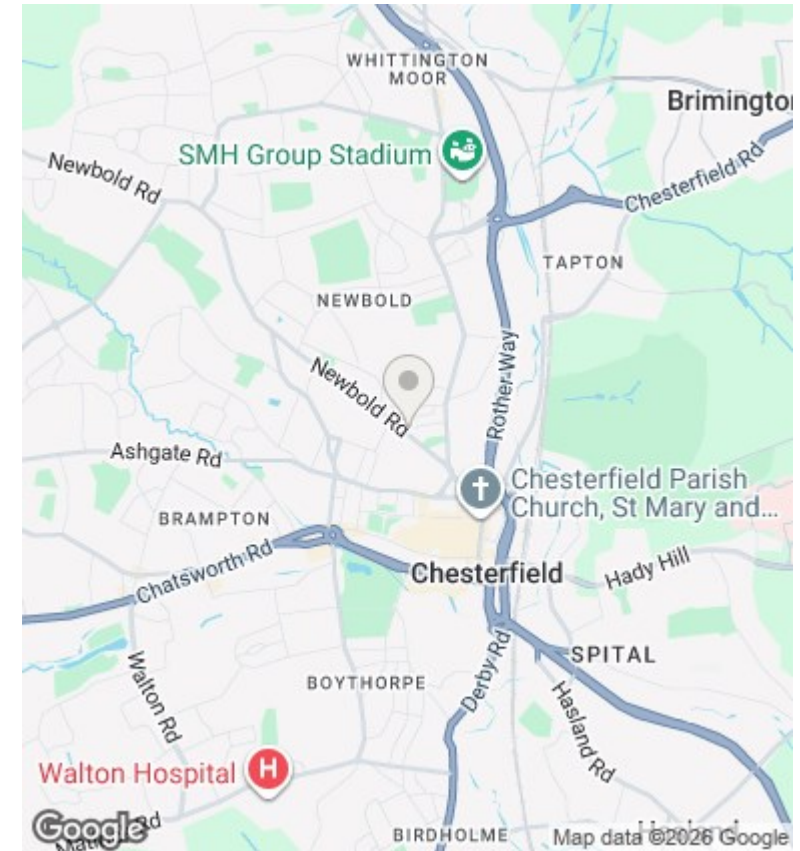
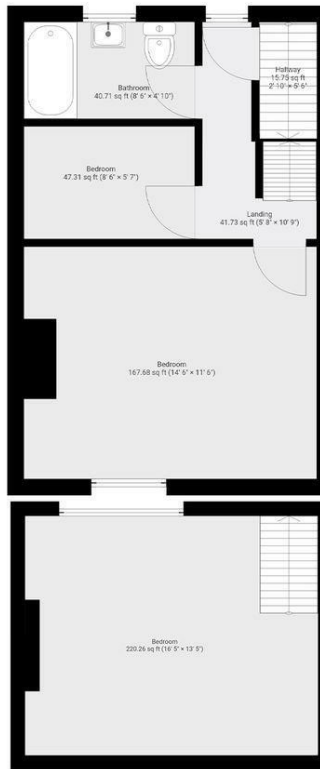


▼ Ground Floor TOTAL AREA: 321.16 sq ft



▼ 2nd Floor TOTAL AREA: 220.10 sq ft

▼ 1st Floor TOTAL AREA: 312.96 sq ft



Directions

Viewings

Viewings by arrangement only. Call 01246 276 276 to make an appointment.

Council Tax Band

B

EPC Rating:

E

Energy Efficiency Rating		Current	Potential
Very energy efficient - lower running costs			
(92 plus) A			
(81-91) B			85
(69-80) C			
(55-68) D			
(39-54) E		52	
(21-38) F			
(1-20) G			
Not energy efficient - higher running costs			
England & Wales		EU Directive 2002/91/EC	