



London Road, TW7

£2,000 Per calendar month

A simply stunning two double bedroom, two bathroom apartment located on the first floor of this popular development. The property benefits from a Juliet balcony and gated parking.

The development is located within a close distance to both Isleworth Mainline Station and Osterley tube station (Piccadilly line) and local school and amenities.

Features

- Two Bedrooms
- Two Bathrooms
- High Quality Finish
- Gated Parking
- Over 850 Sq Ft
- Central Location



London Road, TW7

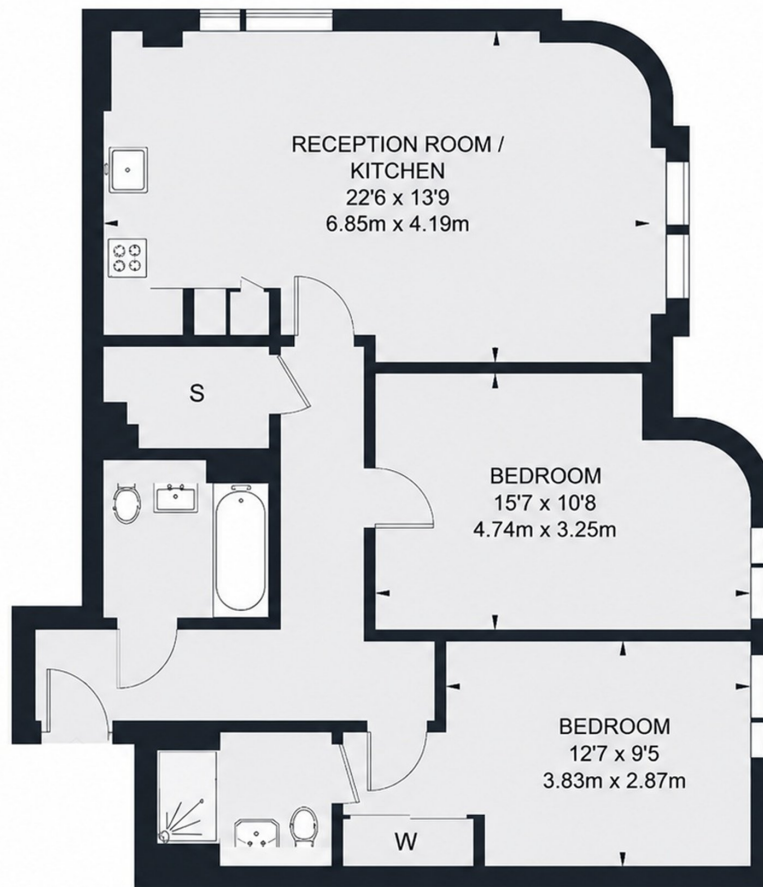
The impressive open-plan reception room provides a bright, welcoming living space, complemented by a contemporary fully fitted kitchen. Large windows invite natural light throughout, while finishes and proportions create a setting for relaxing or entertaining.

Both double bedrooms are generously proportioned and offer comfortable accommodation, with the principal bedroom benefiting from fitted wardrobes and a sleek en suite shower room. A family bathroom, storage solutions, and décor complete the apartment.

Situated within a secure modern development in a highly connected part of Isleworth, the apartment further benefits from lift access, secure off-street parking, a video-entryphone system, and an EPC B rating, moments from local connections.



London Road, Isleworth, TW7



FIRST FLOOR

TOTAL APPROX. FLOOR AREA 859 SQ. FT. (79.8 SQ. M.)