

Boardwalk

# Furber Road

, BRISTOL

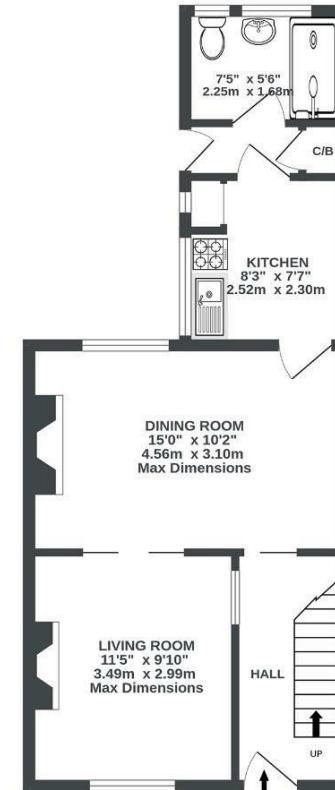
## Furber Road

ST GEORGE

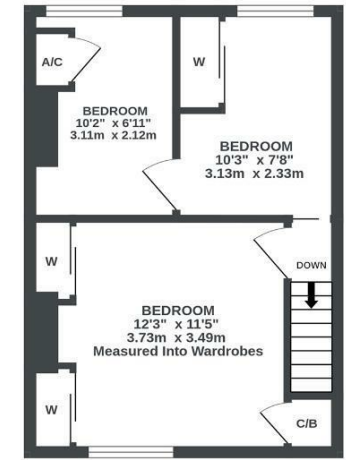
APPROXIMATE FLOOR AREA  
69.1 SQM / 744 SQFT



GROUND FLOOR  
436 sq.ft. (40.5 sq.m.) approx.



1ST FLOOR  
308 sq.ft. (28.6 sq.m.) approx.



Illustrations are for reference purposes only, measurements are approximate, not to scale.

Boardwalk

# Furber Road

, BRISTOL



£260,000



BS5 8PT



3 Bedrooms



1 Bathrooms



*'A great house in a quiet residential area on the outskirts of the city centre'*

