

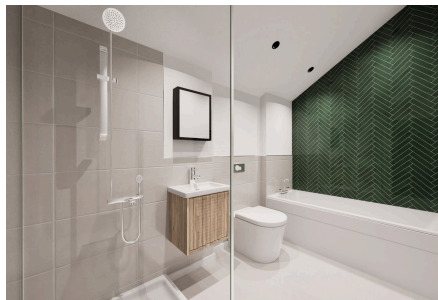


HOMES BY VICTORIA
ESTATE AGENCY

Plot 3 - Castle View, Alcester Road , Studley, B80 7PD

Guide Price £635,000

🛏 3 🚿 2 🚗 2



Step into a world where heritage meets modern living, welcome to Castle View Barns – An exclusive new development on the outskirts of Studley village, offering just eight beautifully converted Victorian brick barns. With characterful exteriors and thoughtfully designed interiors, these homes capture the perfect balance of timeless charm and contemporary elegance.

[homesbyvictoria.co.uk](https://www.homesbyvictoria.co.uk)

victoria@homesbyvictoria | 07833 136521

FOR M HOMES MIDLANDS LIMITED trading as Homes By Victoria Company Number: 13688840 VAT no: 470190115

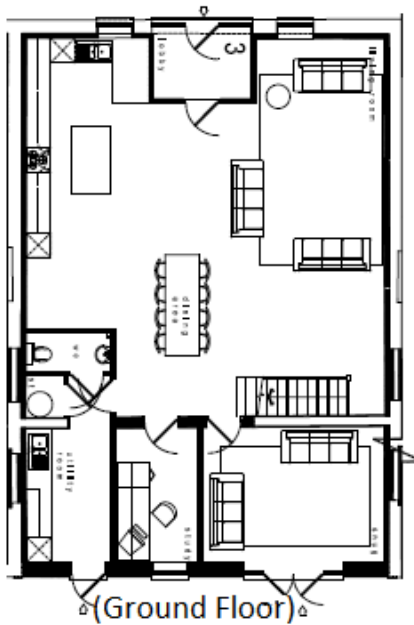


HOMES BY VICTORIA
ESTATE AGENCY



Key Features

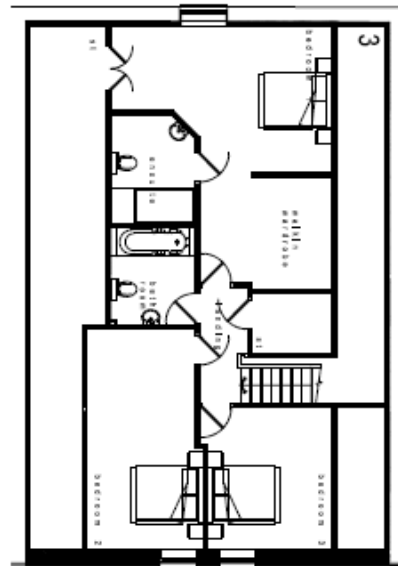
- CASTLE VIEW BARNES IN THE HEART OF STUDLEY
- VICTORIAN BRICK AND HIGH SPECIFICATION INTERIOR
- THREE BEDROOMS
- PRINCIPLE BATHROOM WITH PORCELANOSA TILING
- BLOCK PAVED OFF ROAD PARKING
- LUXURIOUS ELECTRONIC GATED DEVELOPMENT
- OPEN PLAN LIVING
- MASTER BEDROOM WITH EN-SUITE
- RADIATING CHARACTER, CHARM AND CONTEMPORARY ELEGANCE
- PRIVATE LANDSCAPED GARDENS



Plot 3

Living Room / Kitchen /
Breakfast / Dining = 9.35m x 9.05m
Snug = 3.40m x 4.55m
Study = 3.40m x 2.10m
Utility = 3.40m x 2.20m
WC = 1.00m x 2.20m

Total GIFA = 170m² / 1,830ft²



(First Floor)

Bedroom 1 = 5.55m x 3.65m
Bedroom 2 = 2.70m x 5.55m
Bedroom 3 = 3.30m x 3.50m
Bathroom = 2.20m x 2.50m
Ensuite = 2.20m x 2.70m