



Fordwych Road, NW2

£842 Per week

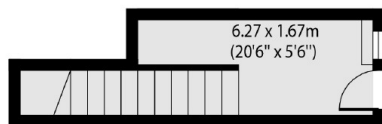
This split level, three bedroom conversion is spread over the first and second floor. The property is well presented with a private landscaped garden ideal for entertaining, a spacious separate reception, an open plan living area with a modern integrated kitchen, two bathrooms, and great storage space.

Fordwych Road is ideally situated with West Hampstead, Kilburn, and Willesden nearby. You have excellent transport links and a wide range of amenities, with a selection of boutique cafés, restaurants, and local amenities all on your doorstep.

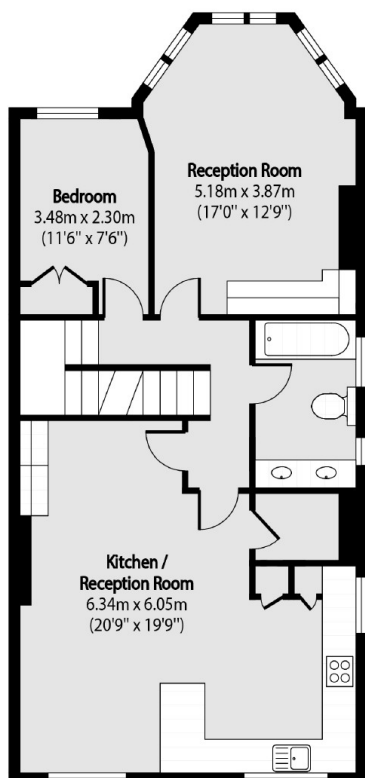
Features

- Three Bedrooms
- Spacious Reception
- Open Plan Kitchen/Lounge
- Family Bathroom
- Great Storage
- Landscaped Garden

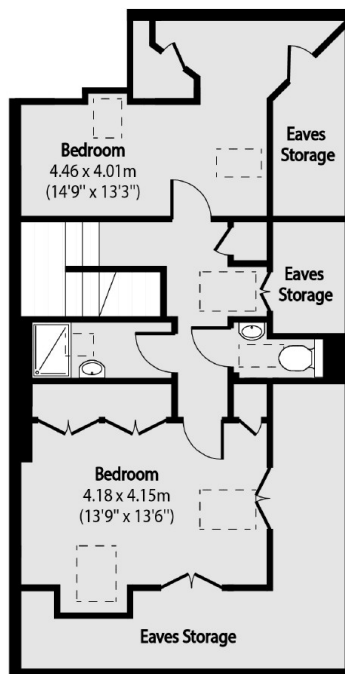
Fordwych Road, London, NW2



Ground Floor



First Floor



Second Floor

Total area (approx): 127.55 sq m (1373 sq. ft)
(Excluding Eaves Storage) 30.97 sq m (333 sq. ft)