



## PORTAL WAY, W3

£2,700 pcm

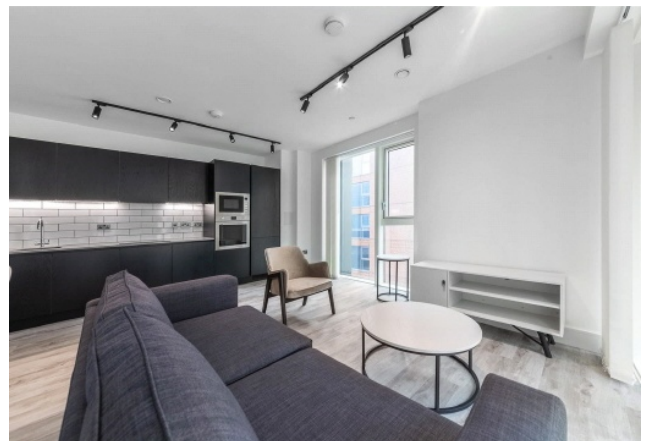
Located on the fourth floor, this luxury two-bedroom, two-bathroom apartment features oak flooring with underfloor heating, floor-to-ceiling windows, and a private balcony. Includes a designer kitchen and keyless entry system.

- Private Glass Balcony
- 24-Hour Concierge
- 
-



## ABOUT THE HOME

Icon Tower offers unparalleled connectivity, situated two minutes from North Acton Station. Enjoy rapid access to the Central and Elizabeth Lines, alongside pet-friendly amenities and a 24-hour concierge service.







**LiFE RESIDENTIAL**

203 Trentham Court, Victoria  
Road, London, W3 6BT  
Sales: 020 3668 1112  
Lettings: 020 3668 1111

Energy Rating: B. We aim to make our particulars both accurate and reliable. However they are not guaranteed; nor do they form part of an offer or contract. If you require clarification on any points then please contact us, especially if you're traveling some distance to view. Please note that appliances and heating systems have not been tested and therefore no warranties can be given as to their good working order.