



## Dixon Butler Mews, W9

### £800,000

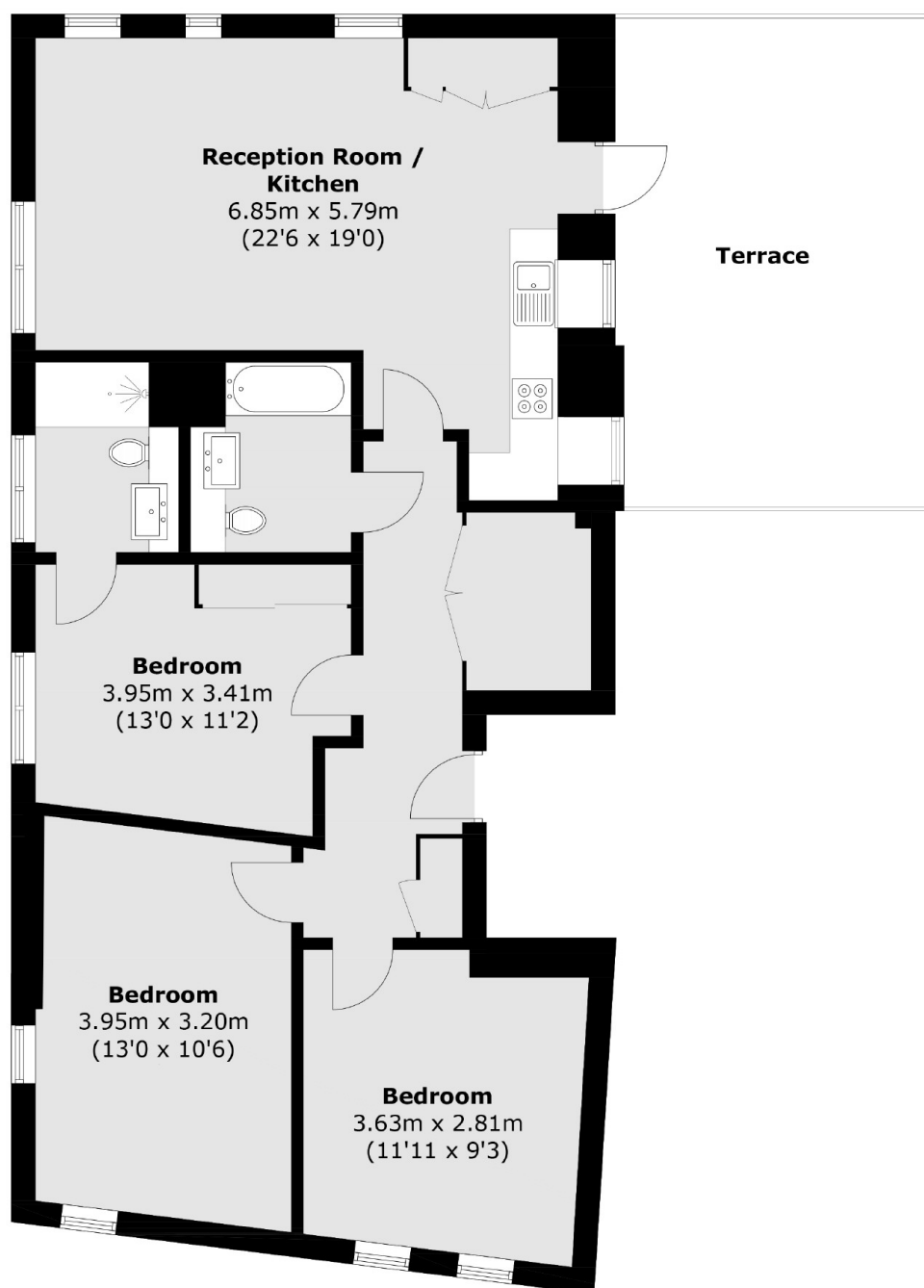
Set on the second floor of a well-maintained purpose-built block, this beautifully presented apartment offers three generous double bedrooms, including a main bedroom with an en suite bathroom. The heart of the home is a bright and stylish open plan kitchen and reception area, featuring large sash windows and a door opening directly onto a private terrace.

Perfectly positioned within walking distance of Westbourne Park underground station (Circle and Hammersmith & City lines) and the picturesque canals of Little Venice, the apartment combines convenience with a sought-after waterside lifestyle.

### Features

- Second Floor Flat
- Purpose-Built Block
- Private West Facing Terrace
- Open Plan Kitchen
- Chain Free
- Long Lease

# Dixon Butler Mews, Maida Vale, W9



Total area (approx.): 95.8 sq. m (1031 sq. ft)  
Terrace: 24.5 sq. m (263.7 sq. ft)