



Available 25th July 2026 - 3X LARGE BEDROOMS & 3 X BATHROOMS! STUDENTS OR PROFESSIONALS - £115.00 PPPW This is a well presented and extremely spacious three genuine double bedrooms, each with their own shower room & wc, back to back in popular Burley! Having a modern open plan lounge & kitchen, three shower rooms & w/c's and huge bedrooms over four floors - viewing is essential to appreciate the GOOD ROOM PROPORTIONS throughout and THREE BATHROOMS. Located very conveniently for Headingley with Burley Park train station just a short walk away and close to Leeds City centre and universities. A deposit of £1000 will be required which will be registered with an approved scheme within 30 days of initial payment. A holding deposit of £100 is required when making an application. If the application is approved the holding deposit will go towards the first month's rent payment.



21 OTLEY ROAD LEEDS LS6 3AA T: 0113 278 7427 enquiries@castlehill.co.uk



Energy Efficiency Rating		Current	Potential
Very energy efficient - lower running costs			
(92-100)	<b>A</b>		
(81-91)	<b>B</b>		
(69-80)	<b>C</b>		76
(55-68)	<b>D</b>		
(39-54)	<b>E</b>	53	
(21-38)	<b>F</b>		
(1-20)	<b>G</b>		
Not energy efficient - higher running costs			
England, Scotland & Wales		EU Directive 2002/91/EC	

Environmental Impact (CO <sub>2</sub> ) Rating		Current	Potential
Very environmentally friendly - lower CO <sub>2</sub> emissions			
(92-100)	<b>A</b>		
(81-91)	<b>B</b>		
(69-80)	<b>C</b>		73
(55-68)	<b>D</b>		
(39-54)	<b>E</b>	48	
(21-38)	<b>F</b>		
(1-20)	<b>G</b>		
Not environmentally friendly - higher CO <sub>2</sub> emissions			
England, Scotland & Wales		EU Directive 2002/91/EC	

### Lower Ground Floor

Approx. 28.5 sq. metres (307.0 sq. feet)

### Ground Floor

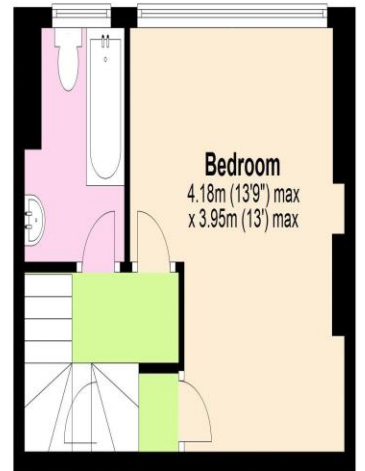
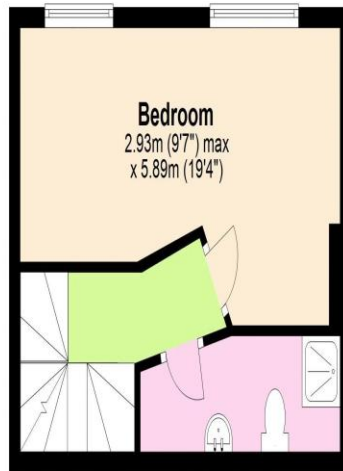
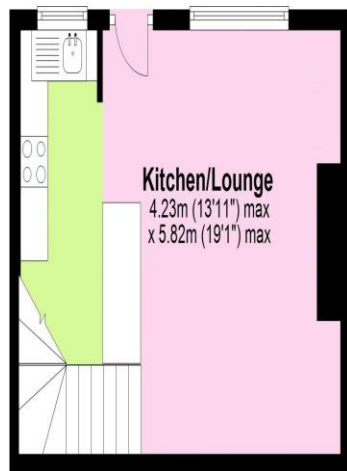
Approx. 24.7 sq. metres (265.6 sq. feet)

### First Floor

Approx. 24.6 sq. metres (264.4 sq. feet)

### Attic

Approx. 24.6 sq. metres (264.4 sq. feet)



Total area: approx. 102.3 sq. metres (1101.5 sq. feet)

Floor plans are for identification only. All measurements are approximate.  
Plan produced using PlanUp.

### Tenant application process

All prospective tenants will need to complete an initial application form. This can be emailed, collected from the office or downloaded from our website or click this [link](#). Applications will then be processed for credit checking and referencing. A holding deposit of £100 per property is due, which on confirmation of a successful application, will be deducted from the first month's rent. If an application is not accepted, Castlehill reserve the right to withhold some or all of the holding deposit if misleading or false information is provided on the application form or the tenant withdraws their application without good reason. In some cases a guarantor may be required. All rents are due at least one month in advance. A deposit of at least the equivalent to one month's rent will be required which will be registered with the relevant authority. Castlehill reserve the right to withhold some or all of the holding deposit if misleading or false information is provided on the application form or the tenant withdraws their application without good reason. In some cases a guarantor may be required. All rents are due at least one month in advance. A deposit of at least the equivalent to one month's rent will be required which will be registered with the relevant authority.