



Gerddi Quarella, offers over £170,000

- 2 bedroom mid-terraced
- parking to the front
- Close to Princess of Wales Hospital
- Council Tax Band C
- Ideal First time buy
- EPC Rating: C





About the property

Located in the peaceful cul-de-sac of Gerddi Quarella, Bridgend, this charming two-bedroom mid-terraced home is perfectly positioned just a short distance from the Princess of Wales Hospital. Ideal for first-time buyers or investors seeking a reliable buy-to-let opportunity, the property offers comfortable living in a quiet and convenient setting.

The accommodation comprises of a separate entrance porch, a spacious Lounge to the front of the property which leads through to a bright and spacious kitchen/diner with French Doors opening onto the rear garden area, to the first floor there are 2 good sized bedrooms plus the family bathroom. Externally the property benefits from off-road parking to the front for up to 2 vehicles and a generous rear garden, this well-situated home provides both practicality and excellent long-term potential.





Accommodation

Entrance Porch

Reception Room - 15' 5" max x 12' max (4.70m max x 3.66m max)

Kitchen/Diner - 12' x 8' 10" (3.66m x 2.69m)

First Floor

Landing

Bedroom One - 12' 6" max x 12' 1" max (3.81m max x 3.68m max)

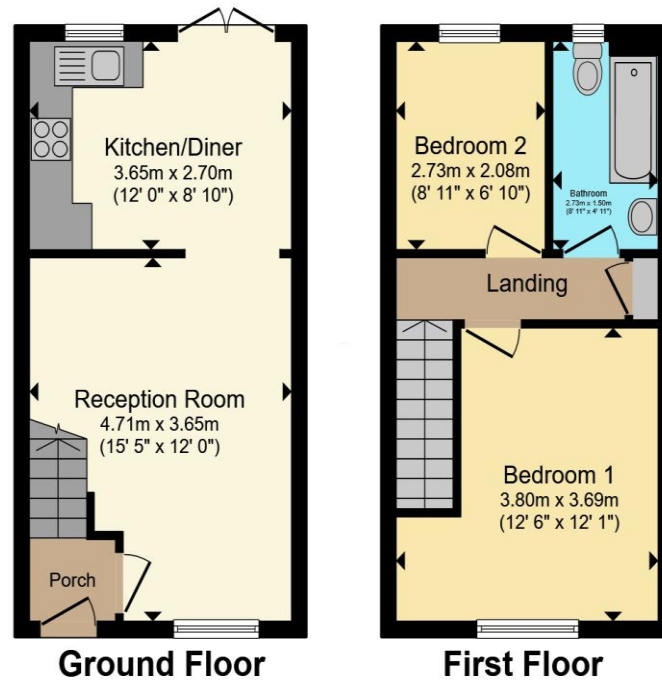
Bedroom Two - 8' 11" x 6' 10" (2.72m x 2.08m)

Bathroom

01656 657201

bridgend@peteralan.co.uk

Floorplan



Total floor area 54.8 m² (590 sq.ft.) approx

This floor plan is for illustrative purposes only. It is not drawn to scale. Any measurements, floor areas (including any total floor area), openings and orientation are approximate. No details are guaranteed, they cannot be relied upon for any purpose and they do not form part of any agreement. No liability is taken for any error, omission or misstatement. A party must rely upon its own inspection(s). Powered by www.propertybox.io

Important Information

Note while we endeavour to make our sales details accurate and reliable, if there is any point which is of particular interest to you, please contact the office and we will be pleased to confirm the position for you. We have not personally tested any apparatus, equipment, fixtures, fittings or services and cannot verify they are in working order or fit for their purposes. Nothing in these particulars is intended to indicate that carpets or curtains, furnishings or fittings, electrical goods (whether wired or not). Gas fires or light fittings or any other fixtures not expressly included form part of the property offered for sale. This computer generated Floorplan, if applicable, is intended as a general guide to the layout and design of the property. It is not to scale and should not be relied upon for dimensions. Tenure: We cannot confirm the tenure of the property as we have not had access to the legal documents. The buyer is advised to obtain verification from their solicitor or surveyor.

Peter Alan Limited is registered in England and Wales under company number 2073153, Registered Office is Cumbria House, 16-20 Hockliffe Street, Leighton Buzzard, Bedfordshire, LU7 1GN. VAT Registration Number is 500 2481 05. For activities relating to regulated mortgages and non-investment insurance contracts, Peter Alan Limited is an appointed representative of Connells Limited which is authorised and regulated by the Financial Conduct Authority. Connells Limited's Financial Services Register number is 302221. Most buy-to-let