



108 Salisbury Street

Blyth NE24 1JN

- Mid Terraced House
 - 17Ft Lounge
 - Fitted Kitchen
 - Shower room
- Spacious accommodation
- No upper chain
- Dining Room
- 3 Bedrooms
 - Rear yard
- Ideal investment

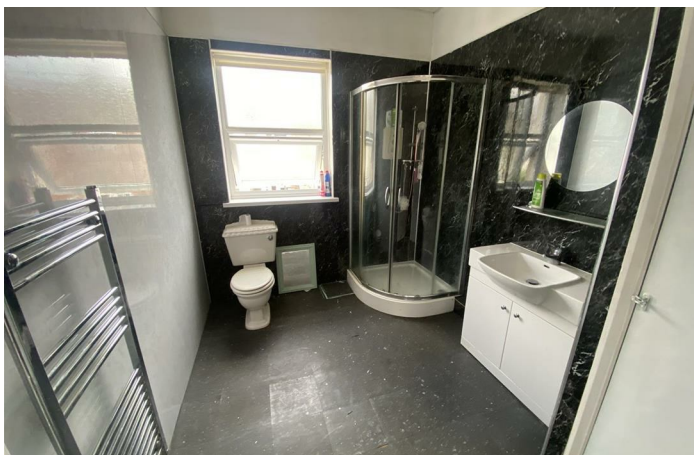
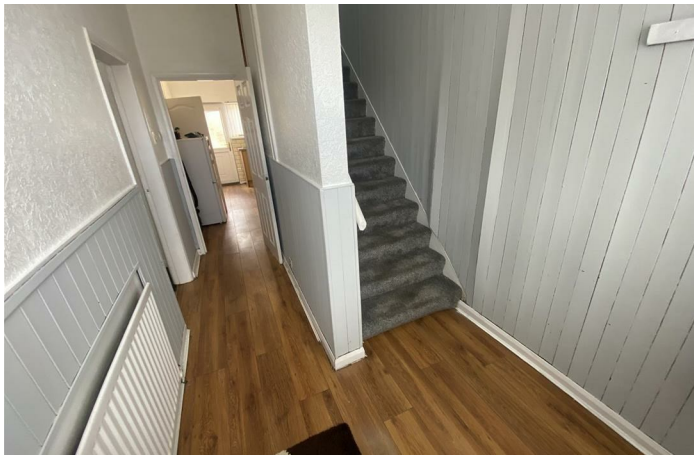
£109,950





Conveniently located in Blyth Town Centre is this spacious mid terraced home, offering ideal accommodation for first time buyers/families or investors looking for buy to let.

Being offered with no upper chain, briefly comprising Reception hallway, 17Ft Living Room, Dining room, fitted kitchen with a range of base and wall units with work benches incorporating stainless steel sink unit, space for cooker, access to rear yard. To the first floor there are 3 bedrooms and a good sized shower room with separate shower cubicle and electric shower, wash hand basin, low level WC, cupboard housing central heating boiler. Externally there is a yard to the rear.



Reception Hallway

Lounge

17'9 x 13'9

Dining Room

11'2 x 10'6

Kitchen

14'3 x 7'10

First floor landing

Bedroom 1

14'2 x 13'1

Bedroom 2

14'5 x 10'11

Bedroom 3


7'11 x 9'0


Externally

Rear yard



Local Authority Northumberland
Council Tax Band A
EPC Rating
Tenure Freehold

Energy Efficiency Rating		Current	Potential
<i>Very energy efficient - lower running costs</i>			
(92 plus) A			
(81-91) B			
(69-80) C			
(55-68) D			
(39-54) E			
(21-38) F			
(1-20) G			
<i>Not energy efficient - higher running costs</i>			
England & Wales	EU Directive 2002/91/EC		

Environmental Impact (CO ₂) Rating		Current	Potential
<i>Very environmentally friendly - lower CO2 emissions</i>			
(92 plus) A			
(81-91) B			
(69-80) C			
(55-68) D			
(39-54) E			
(21-38) F			
(1-20) G			
<i>Not environmentally friendly - higher CO2 emissions</i>			
England & Wales	EU Directive 2002/91/EC		



ML Estates Sales Office

27 Avenue Road, Seaton Delaval, Tyne
 And Wear, NE25 0DT

Contact

0191 237 60 60
 sd@mlestates.co.uk
 www.mlestates.co.uk/

Agents Note: Whilst every care has been taken to prepare these particulars, they are for guidance purposes only. All measurements are approximate and for general guidance purposes only and whilst every care has been taken to ensure accuracy, they should not be relied upon and potential buyers/tenants are advised to recheck the measurements.