



**Price**

**£950 PCM**

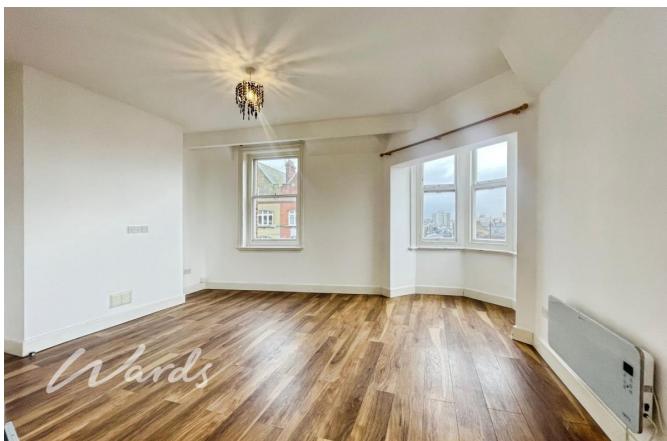
Fees Apply



Available 31/12/25

**Canterbury Road Herne  
Bay CT6**

*Wards*  
Helping you move forwards



## Main Features

Two-bedroom property

Bright and airy accommodation throughout

Open-plan kitchen and living area

Modern shower room

Well-proportioned bedrooms

Close to local amenities, shops and transport links



Deposit required is £1,096.15

Canterbury District - Council Tax Band Tax Band B

## Accommodation

Renting a property is a big commitment and we recommend that you visit the local authority website and these websites which offer helpful information and advice about letting

[www.gov.uk/government/publications/how-to-rent](http://www.gov.uk/government/publications/how-to-rent)

[www.gov.uk/private-renting](http://www.gov.uk/private-renting)

[www.wardsofkent.co.uk/letting/our-tenancy-fees/](http://www.wardsofkent.co.uk/letting/our-tenancy-fees/)

[www.gov.uk/green-deal-energy-saving-measures](http://www.gov.uk/green-deal-energy-saving-measures)

Call Herne Bay 01227 361740 ■ [wardsofkent.co.uk](http://wardsofkent.co.uk)

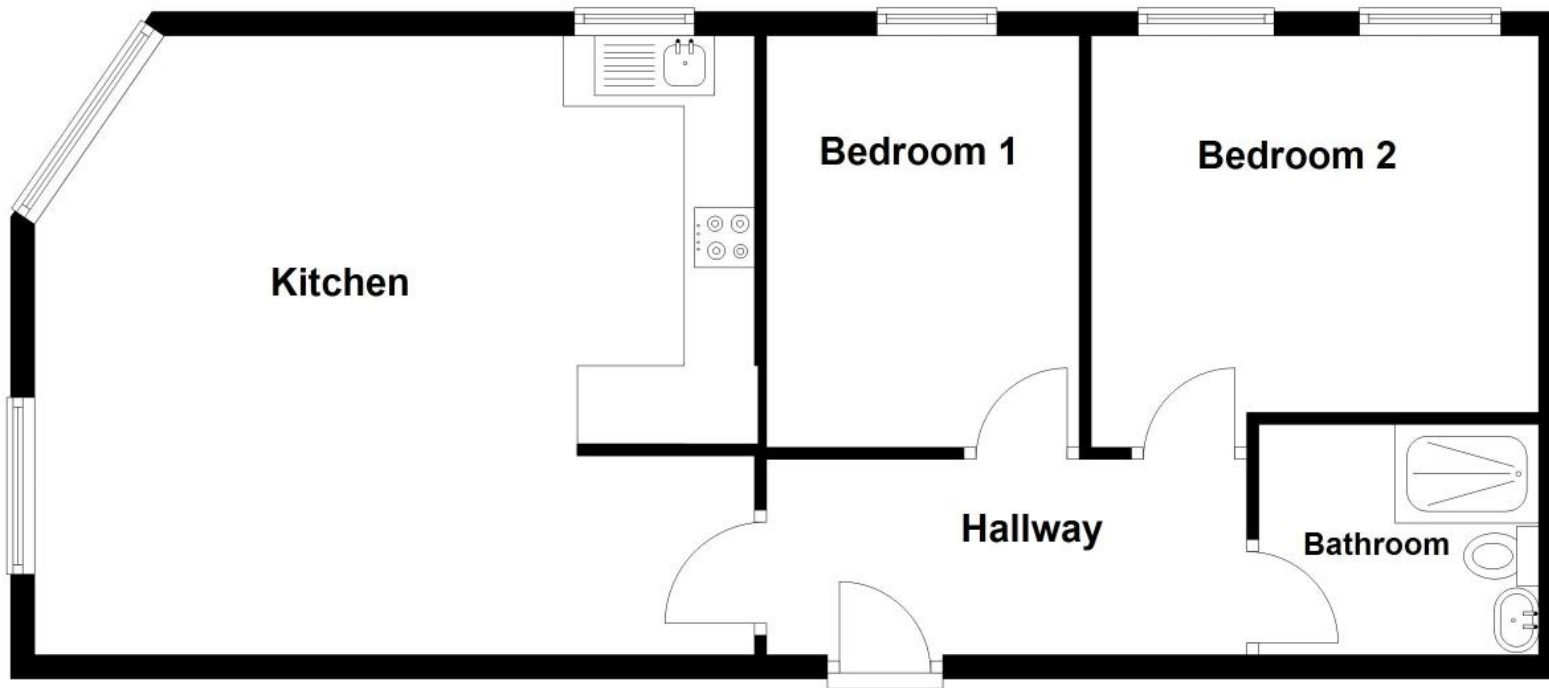
**IMPORTANT INFORMATION:** Please note that administration fees are charged in addition to the rent and security deposit. Please contact our Lettings Team who will confirm the total costs involved in renting this property. For clarification, we wish to inform the prospective tenant that we have prepared these details as a general guide. The agent has not carried out a detailed survey nor tested the services, appliances, or specific fittings (unless otherwise stated), and no warranty can be given as to their condition. All room measurements are taken at floor level. We strongly recommend that all the information which we provide about the property is verified by yourself and your advisers. The contents of this publication are © Wards, 2015. Wards is a trading name of Arun Estates Limited Registered in England No. 2597969

EPC RATING	CURRENT:	POTENTIAL:



## Ground Floor

Approx. 64.0 sq. metres (688.6 sq. feet)



Total area: approx. 64.0 sq. metres (688.6 sq. feet)