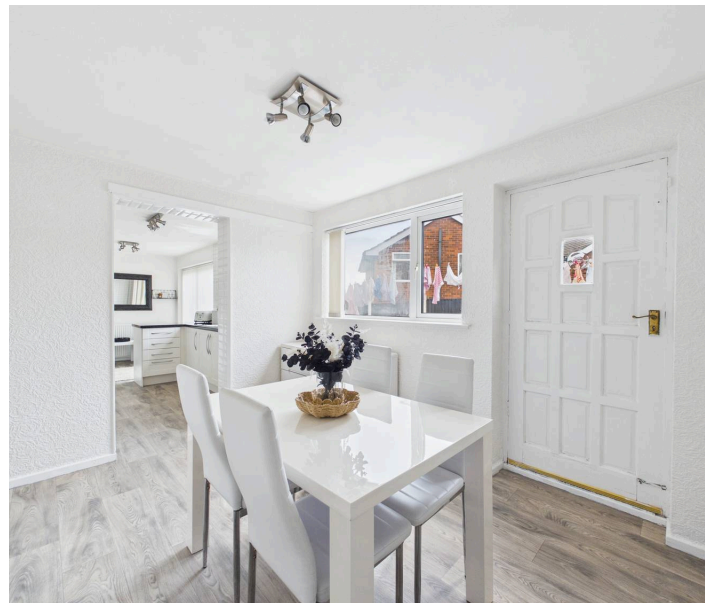




147 Shelford Road, Gedling – NG4 4JH

Guide Price **£270,000 – £280,000**





147 Shelford Road

Gedling, Nottingham

GUIDE PRICE £270,000–£280,000 Well-presented detached home offering two spacious reception rooms, three beds & south facing garden with driveway and integral garage – all close to schools & buses!

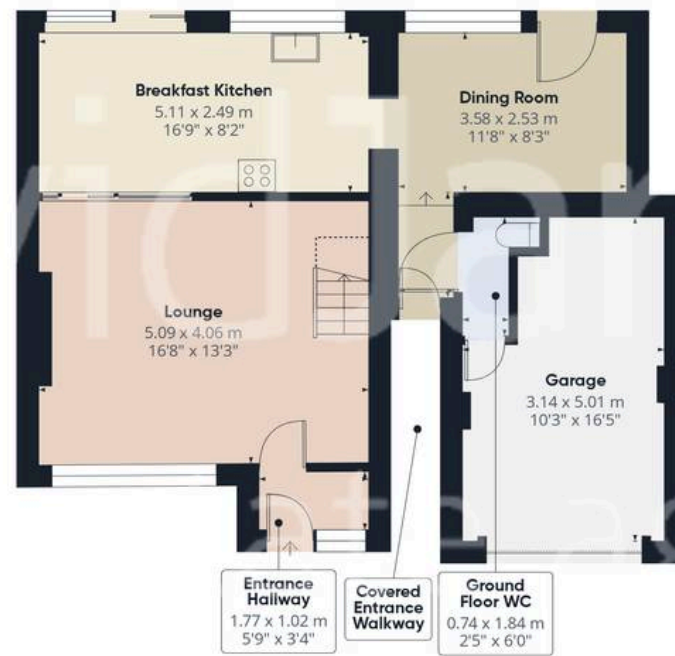
Council Tax band: C

Tenure: Freehold

- Well-presented detached home offering bright and versatile accommodation
- Convenient location near to schools, amenities and local bus services
- Ideal for families seeking thoughtfully designed living spaces
- Bright and spacious lounge with a feature fireplace
- Stylish fitted kitchen with breakfast bar and delightful seating area
- Separate dining room providing excellent space for family entertaining
- Three bedrooms (including main bedroom with built-in wardrobes)
- Modern bathroom with an electric over-bath shower
- Southerly-facing rear garden with paved and gravelled seating areas
- Driveway and garage providing off-street parking







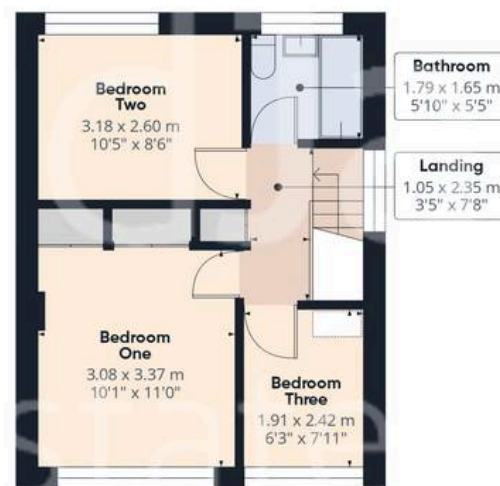
Floor 0

Approximate total area⁽¹⁾

92.6 m²
995 ft²

Reduced headroom

1.2 m²
13 ft²



Floor 1



(1) Excluding balconies and terraces

Reduced headroom

----- Below 1.5 m/5 ft

Calculations reference the RICS IPMS 3C standard. Measurements are approximate and not to scale. This floor plan is intended for illustration only.

GIRAFFE360



David James Estate Agents

David James Estate Agents, 45B Plains Road - NG3 5JU

0115 962 4213 • mapperley@david-james.com • www.david-james.com

These particulars are produced in good faith and are set out as a general guide only. Measurements are approximate and floor plans are for illustrative purposes only. Services have not been tested. We have established professional relationships with third-party suppliers for the provision of services to Clients, details of which can be found on the property listing page on our website.