

Queens Crescent, NW5

£625,000

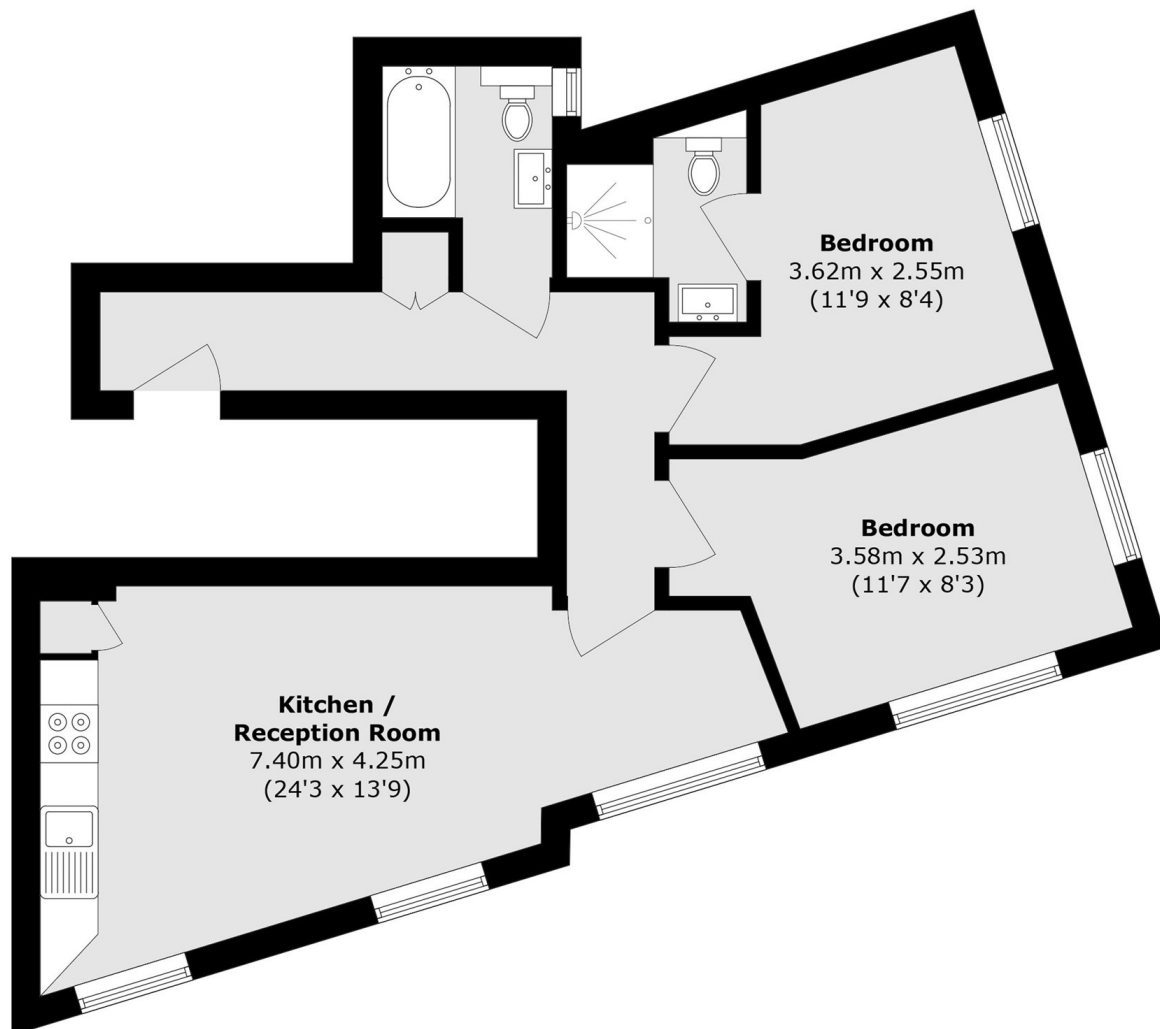
A two double bedroom, two bathroom first floor apartment in great condition throughout. The apartment has an open plan reception room/kitchen, high ceilings and lots of windows letting in plenty of natural light.

Queens Crescent is in a quiet cul-de-sac, close to the shops, cafés and restaurants of Belsize Park & Camden Town. Nearby transport links include Chalk Farm and Belsize Park stations (Northern line).

Features

Two Bedrooms
Two Bathrooms
High Ceilings
First Floor
Leasehold
Great Condition

Queens Crescent, London, NW5



Total area (approx.): 60.3 sq. m (649.1 sq. ft)