

75 Highfield Road, Lymm WA13 0DT

Offers Over £475,000



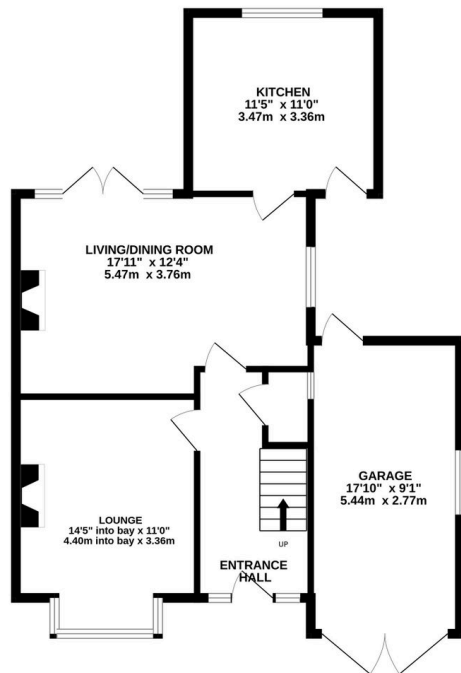
A well-presented four-bedroom semi-detached family home, situated in a highly sought-after location with countryside views to the front and fields to the rear. Conveniently located close to local schools and amenities, this spacious property offers two generous reception rooms, a fitted kitchen with integrated appliances, and a modern shower room with separate WC.

Further benefits include fitted bedroom furniture, gas central heating, UPVC double glazing, an attached garage with power and lighting, driveway parking, and FREEHOLD tenure. Internal viewing is highly recommended.

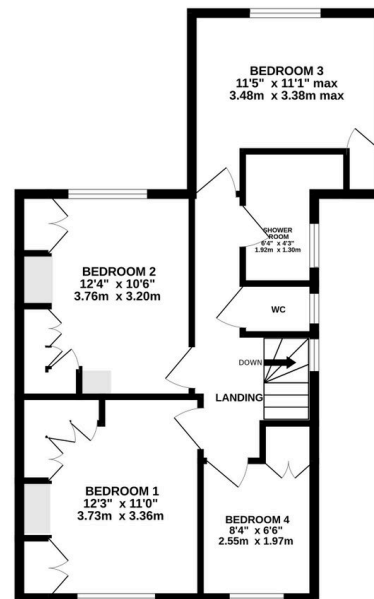
Key Features

- Four bedroom semi-detached family home
- Countryside views to the front elevation
- Overlooks playing fields to the rear
- Popular and sought-after residential location
- Close to well-regarded local schools and amenities
- Spacious lounge with bay window
- Separate reception room with French doors to the garden
- Fitted kitchen with integrated appliances
- Beautiful east-facing rear garden with sheds and greenhouse
- Driveway parking and attached garage with power and lighting

GROUND FLOOR
734 sq.ft. (68.2 sq.m.) approx.



1ST FLOOR
569 sq.ft. (52.9 sq.m.) approx.



TOTAL FLOOR AREA: 1303 sq.ft. (121.0 sq.m.) approx.

Whilst every attempt has been made to ensure the accuracy of the floorplan contained here, measurements of doors, windows, rooms and any other items are approximate and no responsibility is taken for any error, omission or mis-statement. This plan is for illustrative purposes only and should be used as such by any prospective purchaser. The services, systems and appliances shown have not been tested and no guarantee as to their operability or efficiency can be given.

Made with Metropix ©2026