



## Cranes Park Avenue, KT5

### £400,000

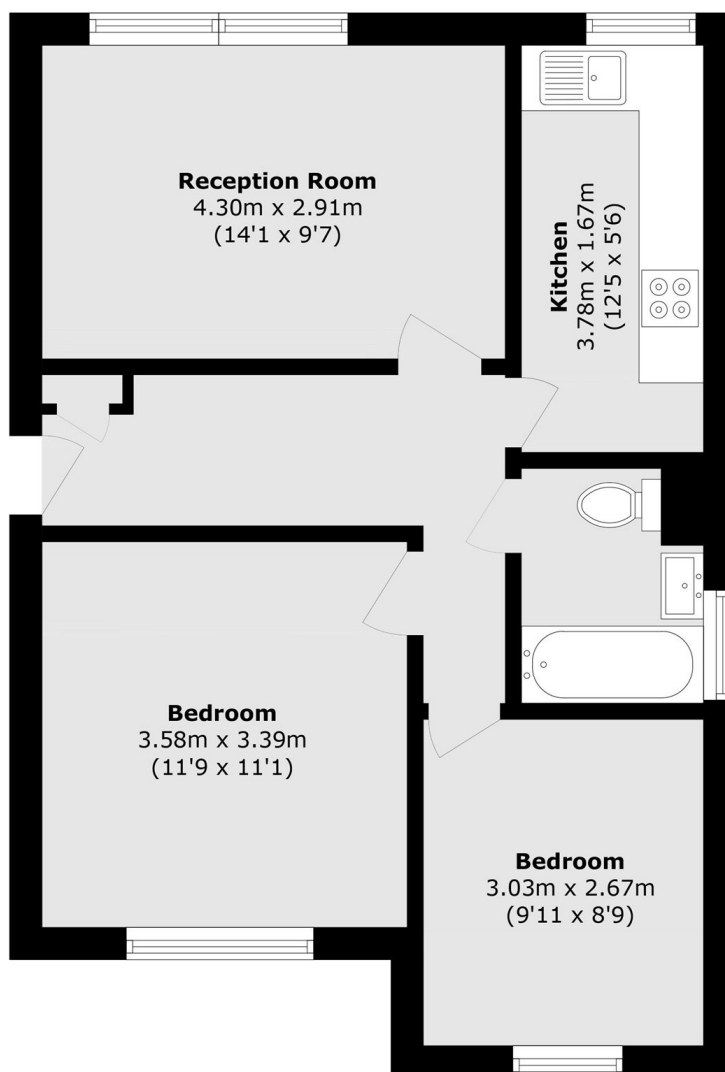
This spacious and well presented ground floor apartment is ideally situated. The property features two generous double bedrooms, a well appointed bathroom, a sleek kitchen and a well proportioned reception room looking on to the communal gardens. Further benefits include a share of the freehold and access to a garage.

Cranes Park has everything you need within one mile, including the River Thames, the cafés and restaurants of Surbiton, the shops of Kingston and Surbiton mainline train station with fast trains to Waterloo in as fast as 16 minutes.

### Features

- Two Double Bedrooms
- Share Of Freehold
- Communal Gardens
- Immaculately Presented
- Modern Bathroom and Kitchen
- Garage

# Cranes Park Avenue, Surbiton, KT5



Total area (approx.): 53.1 sq. m (571.5 sq. ft)