



Location: The property is located in the heart of the picturesque village of Hemyock within walking distance of all the local amenities to include local stores, village school, medical facilities, church, junior school, post office, parish hall and playing fields. There is also a good variation of clubs and societies based in this thriving community which falls within the catchment for the popular Uffculme Secondary School. The village is the largest in the Blackdown Hills and is noted for its outstanding natural beauty with a range of outdoor pursuits available nearby to include delightful walks over the neighbouring countryside. Wellington is approximately 5 miles distant with its larger range of independent shops and larger national stores such as Waitrose. The town itself stands between the River Tone and the Blackdown Hills.

Directions: From Junction 26 of the M5 Motorway exit at Wellington and at the roundabout with the A38 take the first exit signposted Exeter. After approximately 1 mile turn left (immediately after the turning signposted Ford Street) into Monument Road. Continue to the top of the hill and at the staggered crossroads continue straight over signposted Hemyock. Continue down into Hemyock passing the Spar shop on the right hand side and the GP's surgery, continue on this road for approximately 1/4 mile, take the left into Logan Way, then taking the first right into Simcoe Place, where the property can be found on the left hand side as indicated by our For Sale board.

GENERAL REMARKS AND STIPULATION

Tenure: The property is offered for sale Freehold, by private treaty with vacant possession on completion.

Services: , mains water, mains drainage, LPG gas central heating, telephone

Local Authority: Somerset Council, County Hall, The Crescent, Taunton, TA1 4DY.

Property Location: w3w.co//tulip.nightcap.record

Council Tax Band: E

Construction: Brick and Block

Broadband and mobile coverage: We understand that there is good mobile coverage. The maximum available broadband speeds are 1000 Mbps download and 1000 Mbps upload. We recommend you check coverage on <https://checker.ofcom.org.uk/>.

Flood Risk: Surface Water: very low **Rivers and the Sea:** very low **Reservoirs:** Unlikely **Groundwater:** Unlikely

We recommend you check the risks on <https://www.gov.uk/check-long-term-flood-risk>

Planning: Local planning information is available on <https://www3.somersetwestandtaunton.gov.uk/asp/webpages/plan/plapplookup.asp>

IMPORTANT NOTICE Wilkie May & Tuckwood for themselves and for the vendors of the property, whose agents they are, give notice that: 1. the particulars are intended to give a fair and substantially correct overall description for the guidance of intending purchaser and do not constitute part of an offer or contract. Prospective purchasers and lessees ought to seek their own professional advice. 2. All descriptions, dimensions, areas, reference to condition and necessary permissions for use and occupation and other details are given in good faith, and are believed to be correct, but any intending purchasers should not rely on them as statements or representations of fact but must satisfy themselves by inspection or otherwise as to the correctness of each of them. 3. No person in the employment of Wilkie May & Tuckwood has any authority to make or give any representations or warranty

whatever in relation to this property on behalf of Wilkie May & Tuckwood, nor enter into any contract on behalf of the vendor. 4. No responsibility can be accepted for any expenses incurred by intending purchasers in inspecting properties which have been sold, let or withdrawn. MEASUREMENTS AND OTHER INFORMATION All measurements are approximate. While we endeavour to make our sales particular accurate and reliable, if there is any point which is of particular importance to you, please contact the office and we will be pleased to check the information with you.

Code of Practice for Residential Estate Agents: Effective from 1 August 2011:

'8. Financial Evaluation 8a At the time that an offer has been made and is being considered by the seller, you must take reasonable steps to find out from the prospective buyer the source and availability of his funds for buying the property and pass this information to the seller. Such information will include whether the prospective buyer needs to sell a property, requires a mortgage, claims to be a cash buyer or any combination of these. Such relevant information that is available should be included in the Memorandum of Sale having regard to the provisions of the Data Protection Act.8b These reasonable steps must continue after acceptance of the offer until exchange of contracts (in Scotland, conclusion of missives) and must include regular monitoring of the prospective buyer's progress in achieving the funds required and reporting such progress to the seller.

The agent has not tested any apparatus, equipment, fixtures and fittings or services and so cannot verify that they are in working order or fit for their purpose. A Buyer is advised to obtain verification from their solicitor or surveyor. References to the Tenure of the Property are based on information supplied by the Seller. The agent has not had sight of the title documents. A Buyer is advised to obtain verification from their Solicitor.

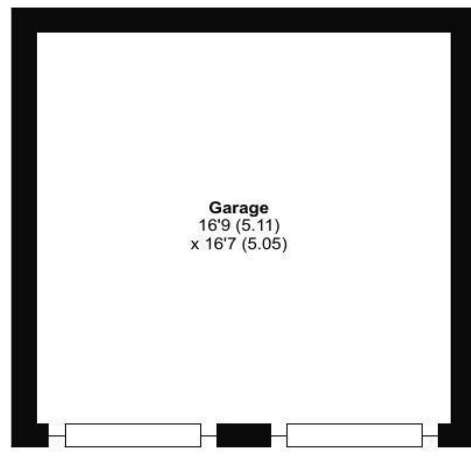
Simcoe Place, Hemyock, Cullompton, EX15

Approximate Area = 1125 sq ft / 104.5 sq m

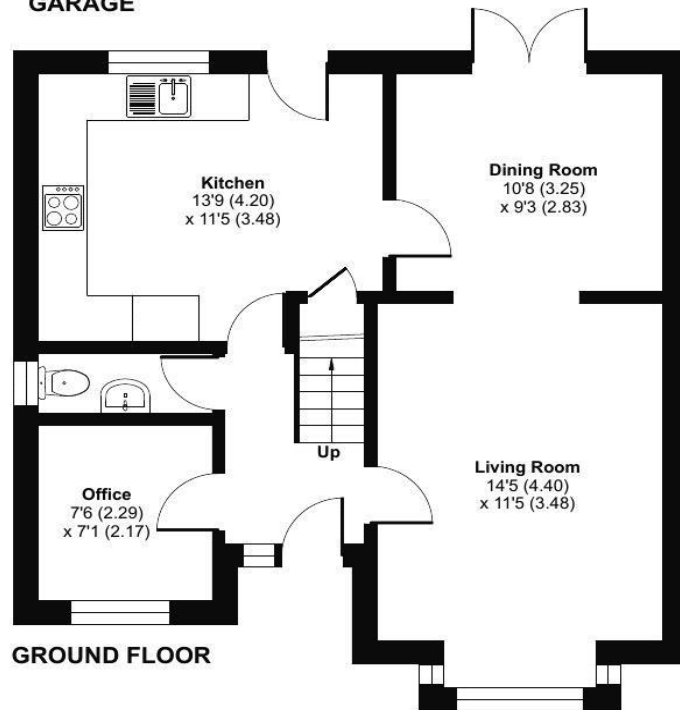
Garage = 278 sq ft / 25.8 sq m

Total = 1403 sq ft / 130.3 sq m

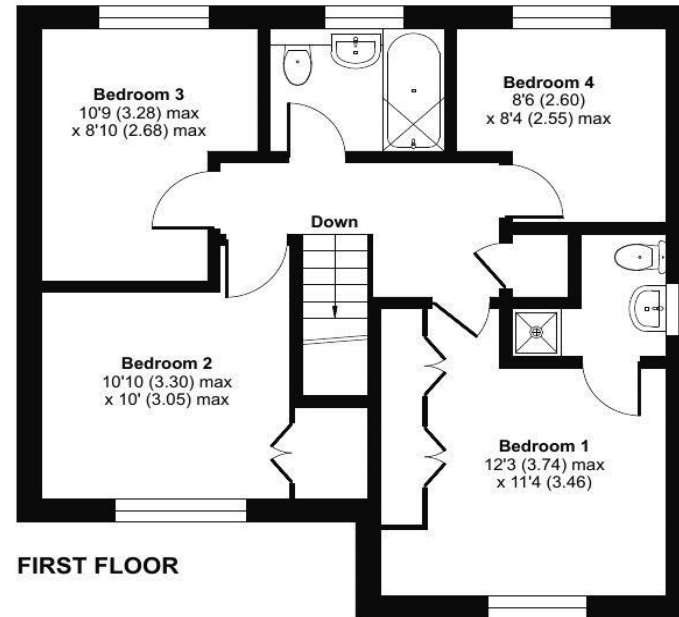
For identification only - Not to scale



GARAGE



GROUND FLOOR



FIRST FLOOR

Floor plan produced in accordance with RICS Property Measurement 2nd Edition, Incorporating International Property Measurement Standards (IPMS2 Residential). © nichecom 2026. Produced for Jeffrey Limited T/A Wilkie May & Tuckwood Wellington. REF: 1419309

1 Simcoe Place is a stunning 4 bedroom detached family home set in a peaceful, slightly elevated position on the edge of Hemyock.

The property has been the subject of a great deal of improvement by the current owners and now offers smart, bright interiors that have been thoughtfully updated including the installation of a stylish fully fitted kitchen with integrated appliances, luxury bathroom and ensuite shower room along with new windows and colonial blinds.

The house has well balanced accommodation which is arranged over two floors including a good sized sitting room, separate dining room, large kitchen, study and a cloakroom on the ground floor. To the first floor there are 4 bedrooms including the master with en-suite shower room in addition to the family bathroom.

There are pleasant gardens to the front and rear with a large additional plot immediately opposite the house. The rear garden is south facing with patio and lawns.

Sitting detached from the house is the large double garage with ample parking for at least three family cars. The house is warmed by an LPG heating system with the tank hidden below the rear garden.



- Four bedroom detached house
- Double garage
- Uffculme School catchment
- Popular modern estate
- Close to village amenities
- Contemporary interior