



Town • Country • Coast



The Village

Milton Abbot, Tavistock

Guide Price £425,000



The Village

Milton Abbot, Tavistock

DUAL OCCUPANCY OPPORTUNITY and NO ONWARD CHAIN. Nestled in this charming village is this character cottage. The stunning countryside views that surround this property are simply breathtaking, offering a tranquil escape from the hustle and bustle of everyday life. As you step inside, you'll be greeted by spacious living accommodation that exudes charm and character. The main house and annexe both boast unique features that add to the overall appeal of this beautiful property. Whether you're looking for a multi-generational living space or a permanent residence with holiday let potential, this cottage has it all.

The sitting room is dual aspect and benefits from natural light streaming in. With character granite fire place as the focal point of the room. The large kitchen offers ample worktop space and undercounter storage. Coupled with the conservatory just steps away this is an exceptional space for entertaining. One of the highlights of this property is the generous two-tiered garden, providing a private oasis for you to relax and unwind. With plenty of seating areas scattered throughout the garden, you'll have endless opportunities to soak in the natural beauty that surrounds you. The patio is perfect for hosting al fresco dining and outdoor entertaining, allowing you to entertain guests while enjoying the fresh country air.

The annexe is a delightful addition to this property. Connected to the main house by a recently added bridge it offers a large double bedroom and a spacious sitting/dining room with panoramic views of Caradon Hill. The kitchen offers a range of eye and base level units as well as views of the garden. Below the annexe, you'll find a large garage and workshop, providing a space with potential for a hobbies room.

This fantastic property in the heart of Devons idyllic countryside really does offer the opportunity of a lifetime to enjoy and enhance.





Sitting Room
15'7" x 10'7" (4.76 x 3.25)

Dining Room
12'4" x 10'8" (3.76 x 3.27)

Kitchen
24'4" x 8'0" (7.43 x 2.44)

Utility
7'0" x 6'5" (2.14 x 1.97)

Conservatory
14'6" x 11'6" (4.44 x 3.51)

Shower Room
7'5" x 4'0" (2.28 x 1.24)

Bedroom 1
15'9" x 10'8" (4.82 x 3.27)

Bedroom 2
12'7" x 10'8" (3.85 x 3.26)

Bedroom 3
11'9" x 6'5" (3.59 x 1.97)

Bedroom 4/Study
9'1" x 7'9" (2.78 x 2.37)

Bathroom
7'6" (expanding to 10'8") x 4'3" (2.30 (expanding to 3.26) x 1.31)

Annexe

Annexe Sitting/Dining Room
17'9" x 9'2" (5.42 x 2.81)

Annexe Kitchen
11'11" x 8'3" (3.64 x 2.53)

Annexe Bedroom 1
14'11" x 6'10" (4.55 x 2.10)

Annexe Bathroom
6'8" x 6'6" (2.05 x 1.99)

Workshop
15'0" x 11'9" (4.58 x 3.59)

Garage
23'8" x 7'7" (expanding to 17'2") (7.22 x 2.32 (expanding to 5.24))

Services
Mains water, electricity and drainage. Oil fired central heating.

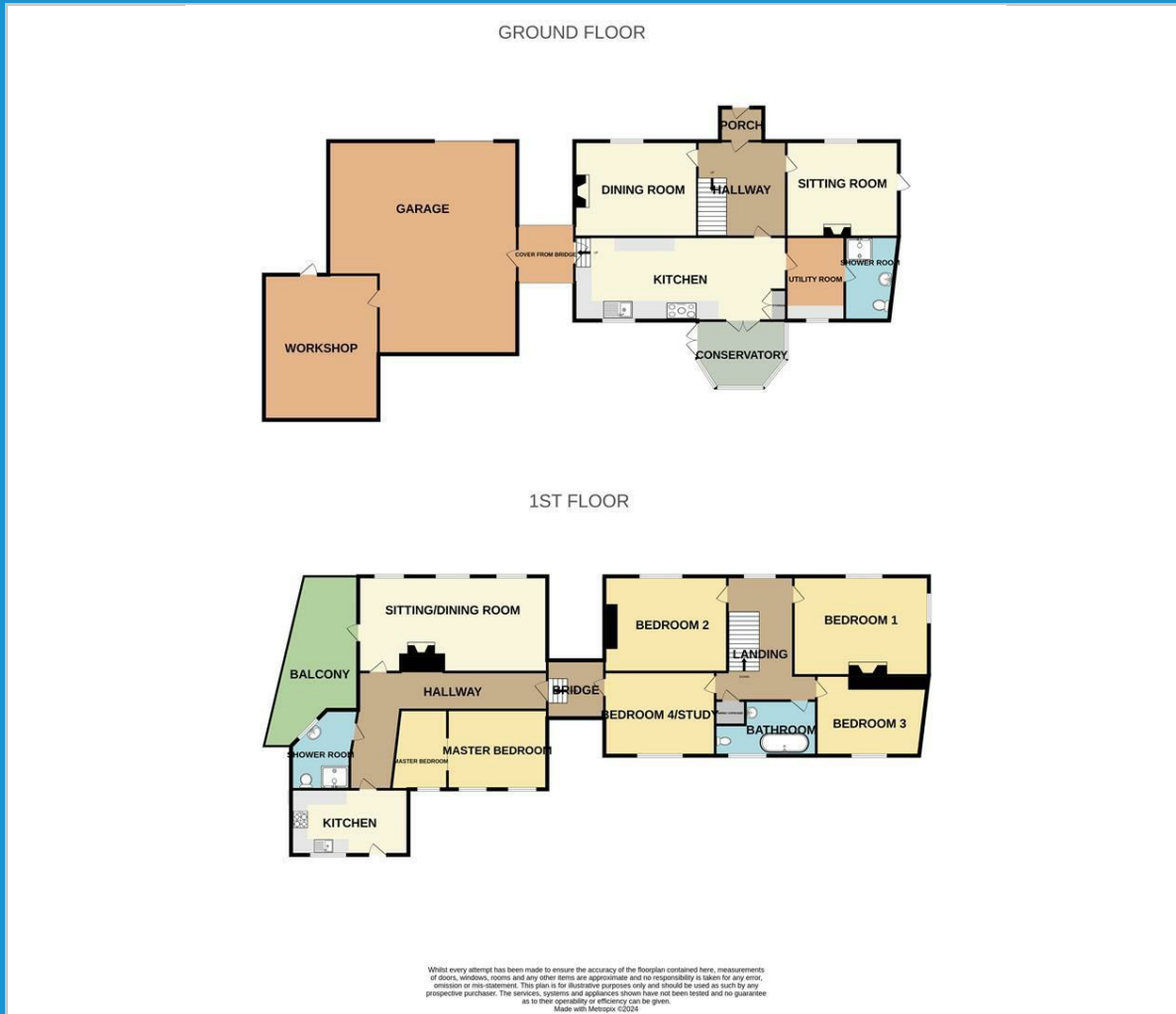
Local Authority
West Devon Borough Council - Tax Band E

EPC
E46

Tenure
Freehold



Floor Plan



Viewing

Please contact our View Property Tavistock Office on 01822 614614 if you wish to arrange a viewing appointment for this property or require further information.

These particulars, whilst believed to be accurate are set out as a general outline only for guidance and do not constitute any part of an offer or contract. Intending purchasers should not rely on them as statements of representation of fact, but must satisfy themselves by inspection or otherwise as to their accuracy. No person in this firm's employment has the authority to make or give any representation or warranty in respect of the property.

Unit 1, The Old Dairy Paddons Row, Tavistock, Devon, PL19 0HF
 Tel: 01822 614614 Email: Tavy@viewproperty.org.uk www.viewproperty.org.uk

Area Map



Energy Efficiency Graph

