



## Penthouse Flat, Ravenscroft Court Ravenscroft Avenue

, London, NW11 8BA

**£4,200 Per Month**

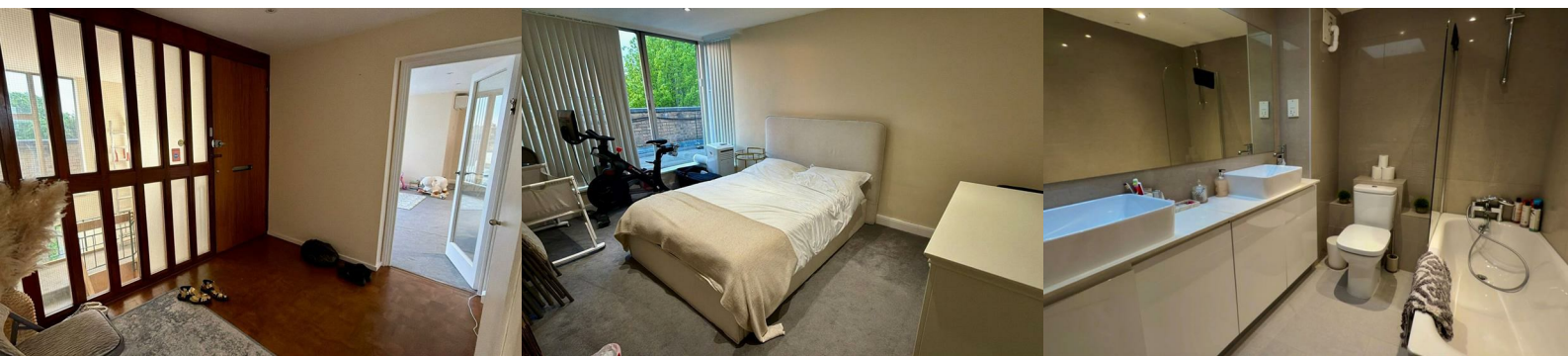


Nestled in the charming area of Ravenscroft Avenue, London, this delightful house offers a perfect blend of comfort and style. Spanning an impressive 1,528 square feet, the property boasts four spacious bedrooms, making it an ideal home for families or those seeking extra space for guests or a home office.

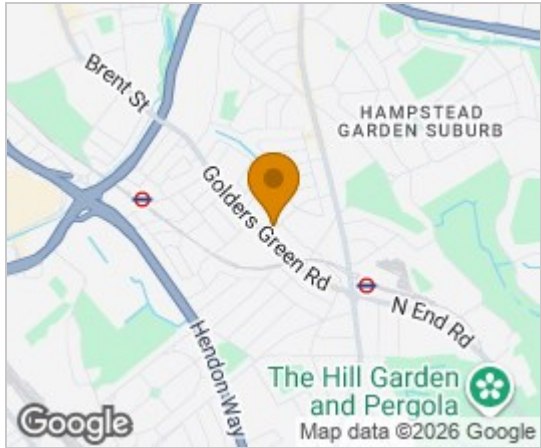
Upon entering, you are welcomed into a well-appointed reception room, perfect for entertaining or relaxing with loved ones. The layout of the house is thoughtfully designed, ensuring a seamless flow between the living spaces. With two modern bathrooms, morning routines and family life are made easy and convenient.

The location on Ravenscroft Avenue provides a peaceful residential atmosphere while still being within easy reach of the vibrant amenities that London has to offer. Residents can enjoy nearby parks, shops, and excellent transport links, making commuting and exploring the city a breeze.

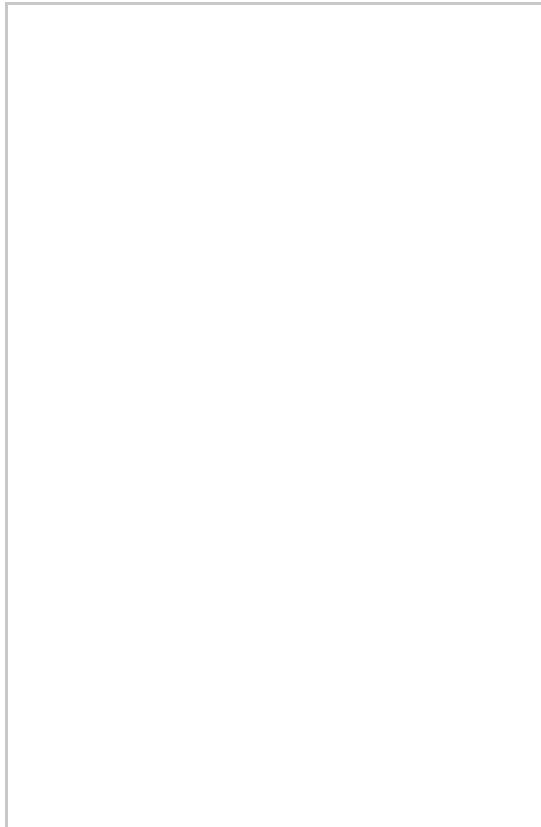
This property presents a wonderful opportunity for those looking to settle in a desirable area of London, combining spacious living with the convenience of urban life. Don't miss the chance to make this house your new home.



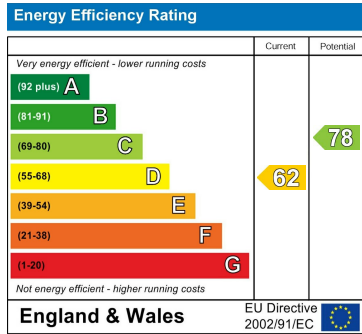
### Area Map



### Floor Plans



### Energy Efficiency Graph



These particulars, whilst believed to be accurate are set out as a general outline only for guidance and do not constitute any part of an offer or contract. Intending purchasers should not rely on them as statements of representation of fact, but must satisfy themselves by inspection or otherwise as to their accuracy. No person in this firms employment has the authority to make or give any representation or warranty in respect of the property.