



**37, Lowsley Farm Drive, Liphook, Hampshire, GU30 7WN.
Guide price Price Guide £695,000 Freehold.**

CLARKE  GAMMON

37, LOWSLEY PARK DRIVE,
LIPHOOK HAMPSHIRE, GU30 7WN.

Guide price £695,000 Freehold.

Previously a show house

Excellent location opposite
picturesque pond

Hall & cloakroom

Sitting room with bay window

Spacious kitchen/breakfast/living
room

Utility room

Principal bedroom suite

2 further bedrooms with en-suites

Garage/parking & home office

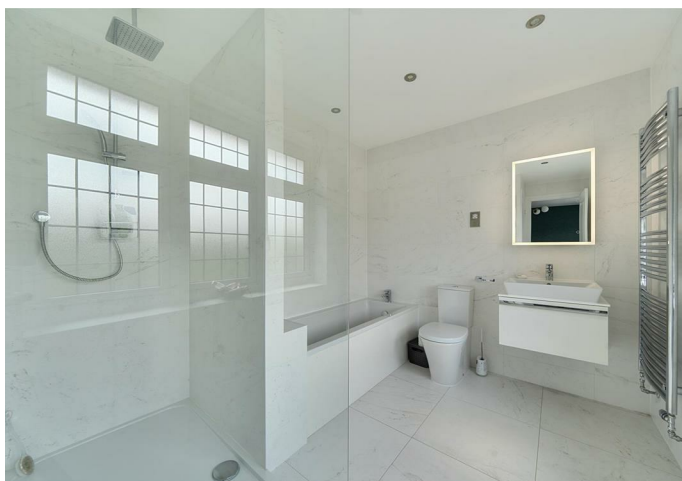
Landscape rear gardens



**This beautifully presented three-
bedroom detached home
perfectly combines
contemporary style with classic
appeal.**

THE PROPERTY

Thoughtfully designed throughout, it offers bright, spacious interiors. Located within the highly desirable Maple Walk development in Liphook, this modern home built in 2022 enjoys a prime position. The ground floor offers an entrance hall, with a handy cloakroom, a generous sitting room enhanced by large front bay window, that floods the room with natural light. To the rear of the property, the impressive open-plan kitchen/breakfast/living room is the true heart of the home. Finished in a contemporary shaker style, it features integrated appliances and ample space for both cooking and dining. A cleverly designed utility houses the washing machine and tumble dryer. Upgraded bi-fold doors open directly onto the garden, creating a seamless indoor-outdoor flow and allowing natural light to pour in. Upstairs, the principal bedroom benefits from a bay window, walk-in wardrobes, and a sleek en-suite shower/bathroom. Two additional bedrooms both of which have ensuite shower rooms, offering flexibility for family, guests, or home working.



THE GROUNDS

The property boasts an attractive frontage with driveway parking for 3 vehicles, and a single garage. The private rear garden provides a peaceful outdoor haven, mainly laid to lawn and complemented by an extended patio area—perfect for al fresco dining and summer entertaining. A side gate offers convenient access to the garage.

There is a fully functional home office

SITUATION

The village centre is approximately 0.7 miles away, while Liphook railway station (around 1.1 miles) offers direct services on the Portsmouth to London Waterloo line. The nearby A3 ensures excellent road links to London and the South Coast. Liphook itself offers a wide range of amenities, including a supermarket, GP and dental surgeries, a library, and a selection of well-regarded schools. The surrounding countryside, much of it managed by the National Trust, provides beautiful spaces for walking and outdoor pursuits.

BOHUNT SCHOOL - 0.4 miles

VILLAGE CENTRE - 0.6 miles

CLOSE ACCESS TO A3

LONDON WATERLOO - just over an hour by train

GODALMING - 12 miles

HASELMERE - 4 miles

GUILDFORD - 18 miles

Lowsley Farm Drive, Liphook, GU30

Approximate Area = 1495 sq ft / 138.8 sq m
 Garage = 216 sq ft / 20 sq m
 Outbuilding = 66 sq ft / 6.1 sq m
 Total = 1777 sq ft / 164.9 sq m

For identification only - Not to scale

LOCAL AUTHORITY EHDC

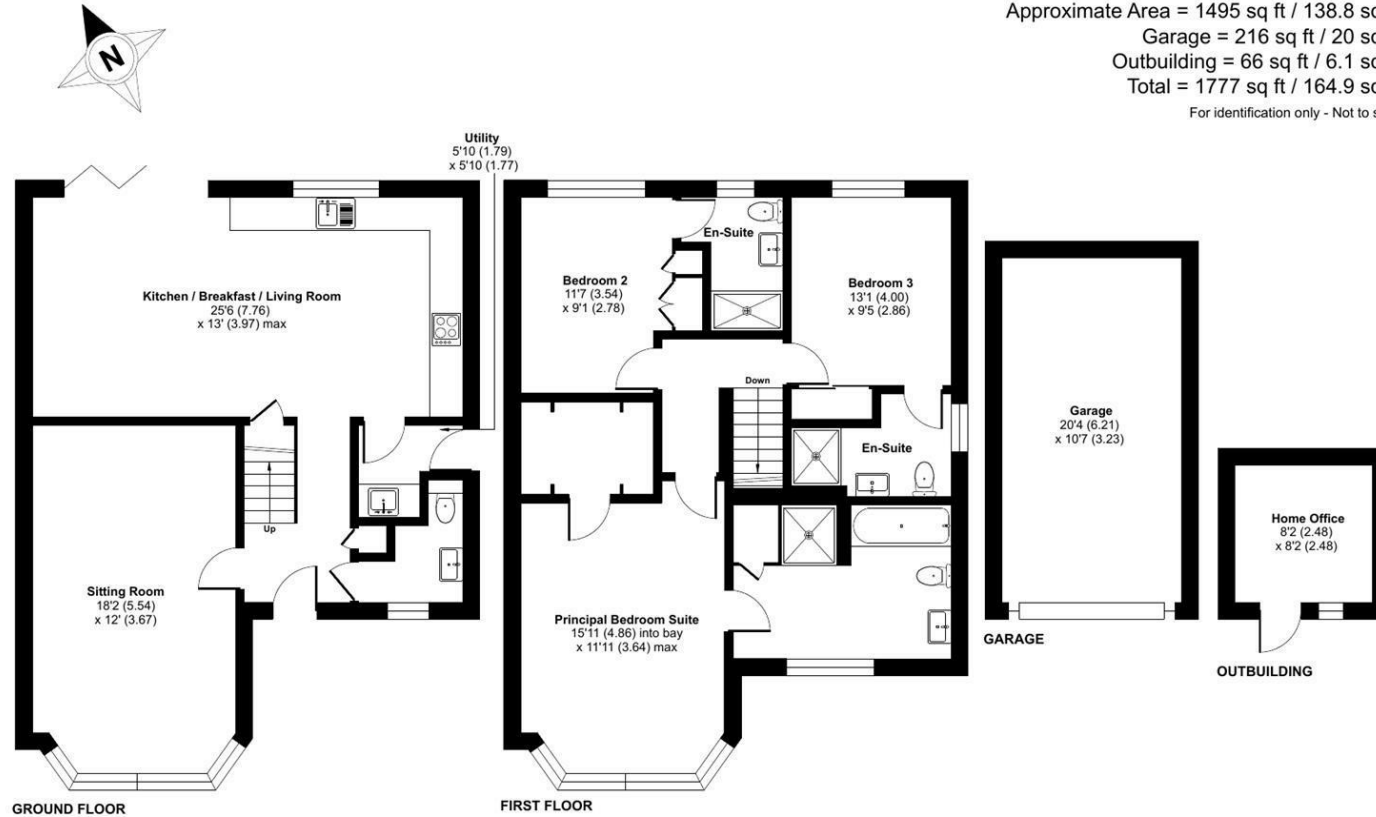
COUNCIL TAX

Band F

SERVICES

Mains water, electricity, mains drainage
 gas central heating

9th May 2026



Floor plan produced in accordance with RICS Property Measurement 2nd Edition, incorporating International Property Measurement Standards (IPMS2 Residential). © nchecom 2026. Produced for Clarke Gammon. REF: 1453996

| Energy Efficiency Rating | | |
|---|-------------------------|-----------|
| | Current | Potential |
| Very energy efficient - lower running costs | | |
| (92 plus) A | | 94 |
| (81-91) B | 85 | |
| (69-80) C | | |
| (55-68) D | | |
| (39-54) E | | |
| (21-38) F | | |
| (1-20) G | | |
| Not energy efficient - higher running costs | | |
| England & Wales | EU Directive 2002/91/EC | |

CG LIPHOOK OFFICE

2 MIDHURST ROAD, LIPHOOK, HAMPSHIRE, GU30 7ED

T: 01428 728900

E: liphook.sales@clarkegammon.co.uk

clarkegammon.co.uk

DIRECTIONS

From our offices in Liphook, proceed along the Longmoor Road passing Bohunt School on the left and at the roundabout turn right into Lowsley Farm Drive. Turn first left and the house will be found on the left opposite the pond.

AGENT'S NOTE

Whilst we endeavour to make our sales particulars accurate and reliable, we wish to inform prospective purchasers that we have not carried out a detailed survey, nor tested the services, appliances and specific fittings. If there is any point which you would like to have further clarification upon, please contact this office.

ESTATE AGENTS CHARTERED SURVEYORS VALUERS LETTINGS AUCTIONEERS

GUILDFORD OFFICE
T: 01483 880 900

HASLEMERE OFFICE
T: 01428 664 800

LIPHOOK OFFICE
T: 01428 728 900

MAYFAIR OFFICE
T: 0870 112 7099

AUCTION ROOMS
T: 01483 223101

