



Wedderburn Road, NW3

£5,700 Per calendar month

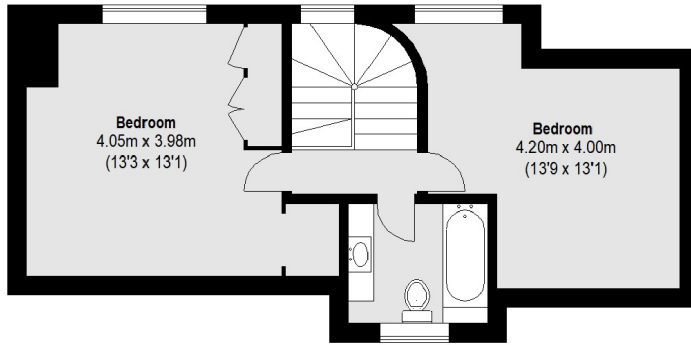
A charming four double bedroom apartment set over the second and third floor of this conversion. The property boasts a spacious reception room with direct access to a private balcony, separate kitchen and two bathrooms.

The flat is located a short walk to Belsize Park tube station giving you quick access to the City and Central London on the Northern Line.

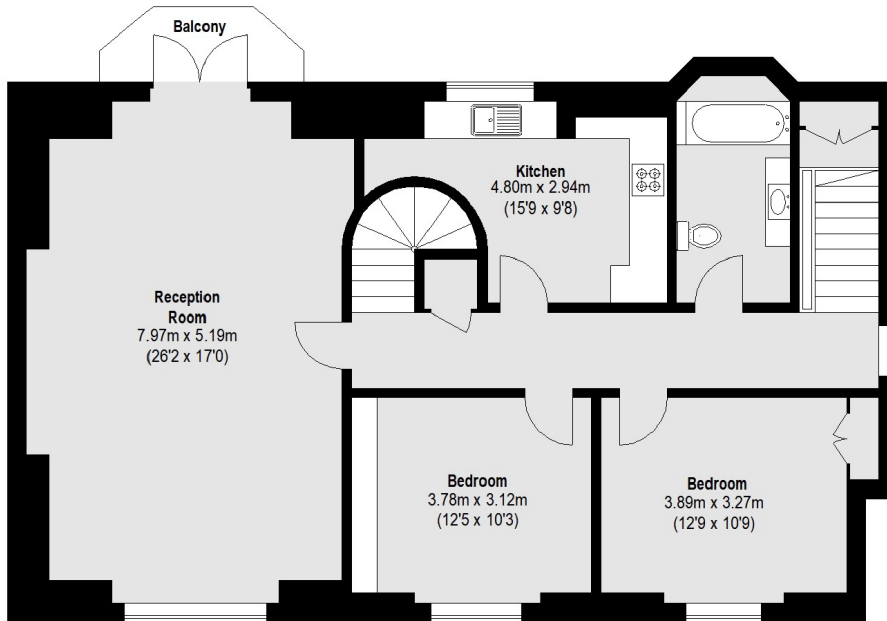
Features

- Four Bedrooms
- Two Bathrooms
- Split Level
- Private Balcony
- Bright
- Great Location

Wedderburn Road, London, NW3

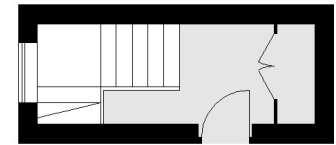


Third Floor



Second Floor

Total area (approx.): 156.35 sq. m (1683 Sq. ft)
Balcony : 3.32 sq. m (36 Sq. ft)



First Floor