



## Arniston Way, E14

**£519** Per week

A one bedroom apartment in this modern development. The flat has a private enclosed winter garden and contemporary fittings throughout. Residents benefit from an on-site concierge service.

Blackwall Reach has great transport links being under three quarters of a mile from Canary Wharf and there are three DLR stations within 0.3 miles of the apartment.

### Features

- Mid-Floor Position
- One Double Bedroom
- Modern Development
- Furnished
- Winter Garden
- On-Site Concierge Service

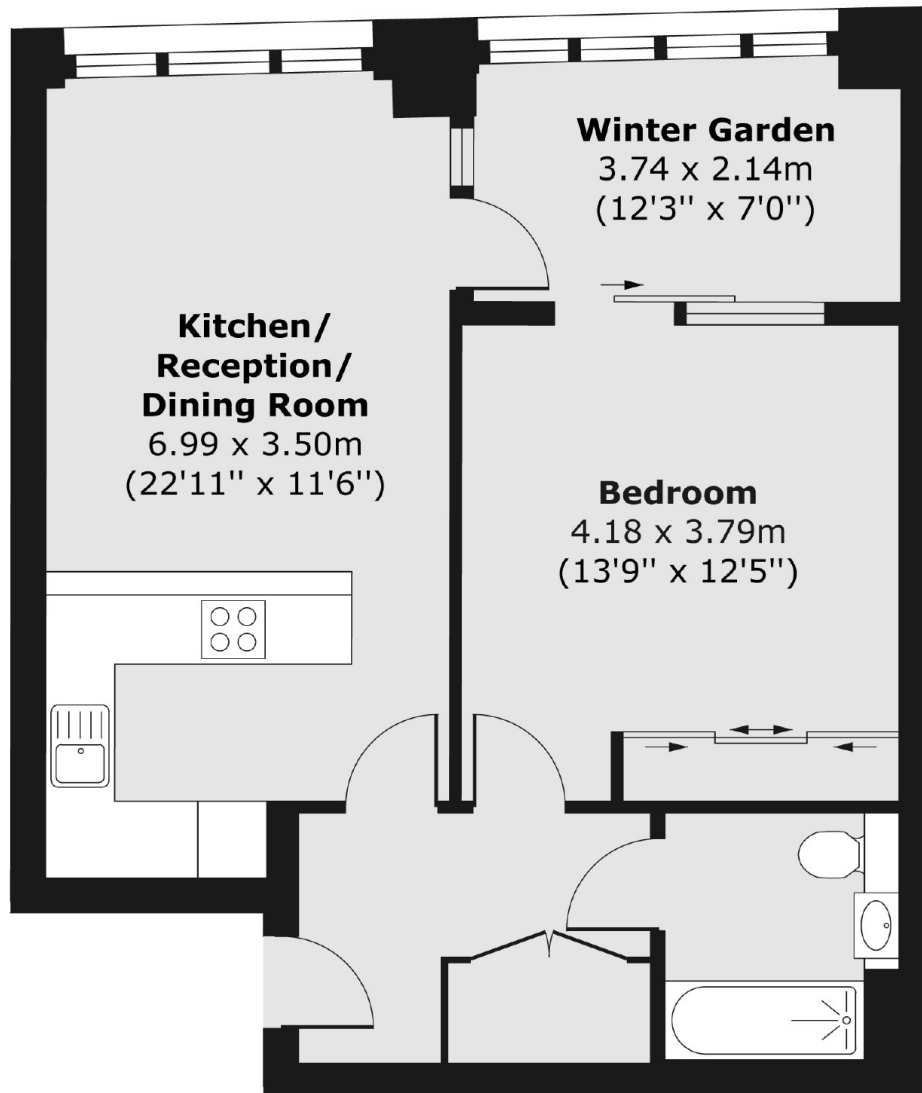


**Arniston Way, E14**





# Arniston Way, London, E14



Total area (approx.) 51.16 sq. m (551 sq. ft)  
Winter Garden area (approx.) 7.63 sq. m (82 sq. ft)