

abbotFox

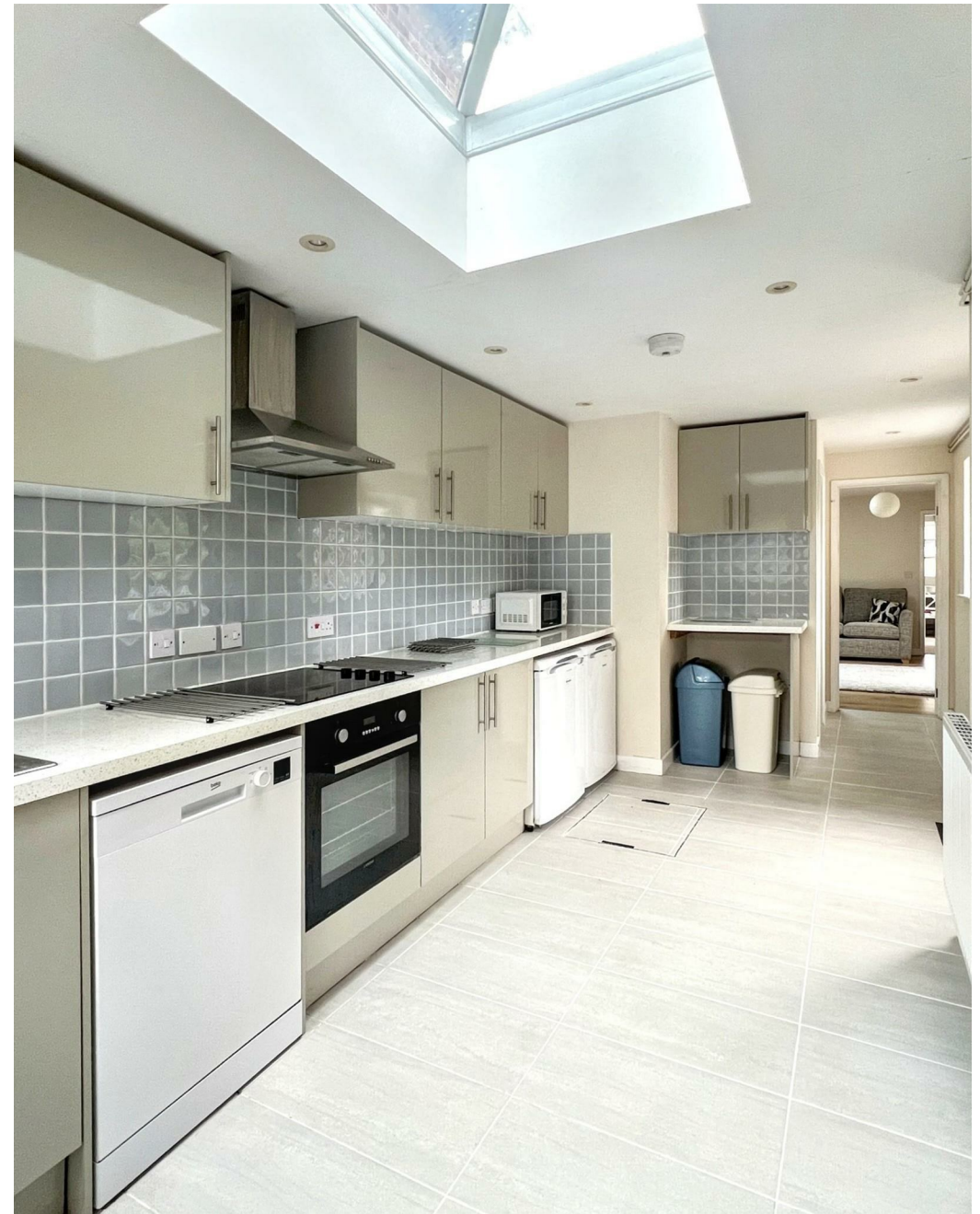


Primula Drive, Norwich
£3,240 Per Month

“

We are a team of genuine individuals who hold a deep passion for both property and marketing. Collectively, we bring over 70 years of experience in the property market of Norfolk and Suffolk. Our affection for both counties runs deep, and we are enthusiastic about sharing our passion with you.

Colin McKenzie | **Branch Partner**







THE DETAIL _____

abbotFox is pleased to present this well-equipped student property, ideally located near the University of East Anglia. This detached home offers all double bedrooms, excellent communal spaces, and modern amenities designed for student living.

Key Features:

- All double bedrooms – spacious and fully furnished
- Large lounge – with French doors leading to a private rear garden
- Expansive kitchen & dining area – perfect for communal living
- Secure bike storage – keeping bikes safe and accessible
- Off-road parking for up to five cars – a rare student benefit
- Three bathrooms & additional downstairs toilet – reducing morning queues

Well-Equipped Kitchen & Living Spaces

This home features a modern kitchen with:

- Two ovens, two hob units – perfect for shared cooking
- Larder fridge freezer + extra under-counter fridge & freezer
- Dishwasher, washing machine & tumble dryer
- Two microwaves for convenience
- The spacious lounge opens onto a private garden, ideal for relaxing or socializing.

Prime Location

Situated in a popular student area, this home provides easy access to UEA, local amenities, and transport links.

With generous space, great features, and a prime location, this is an excellent student home.

Enquire now with abbotFox to arrange a viewing!

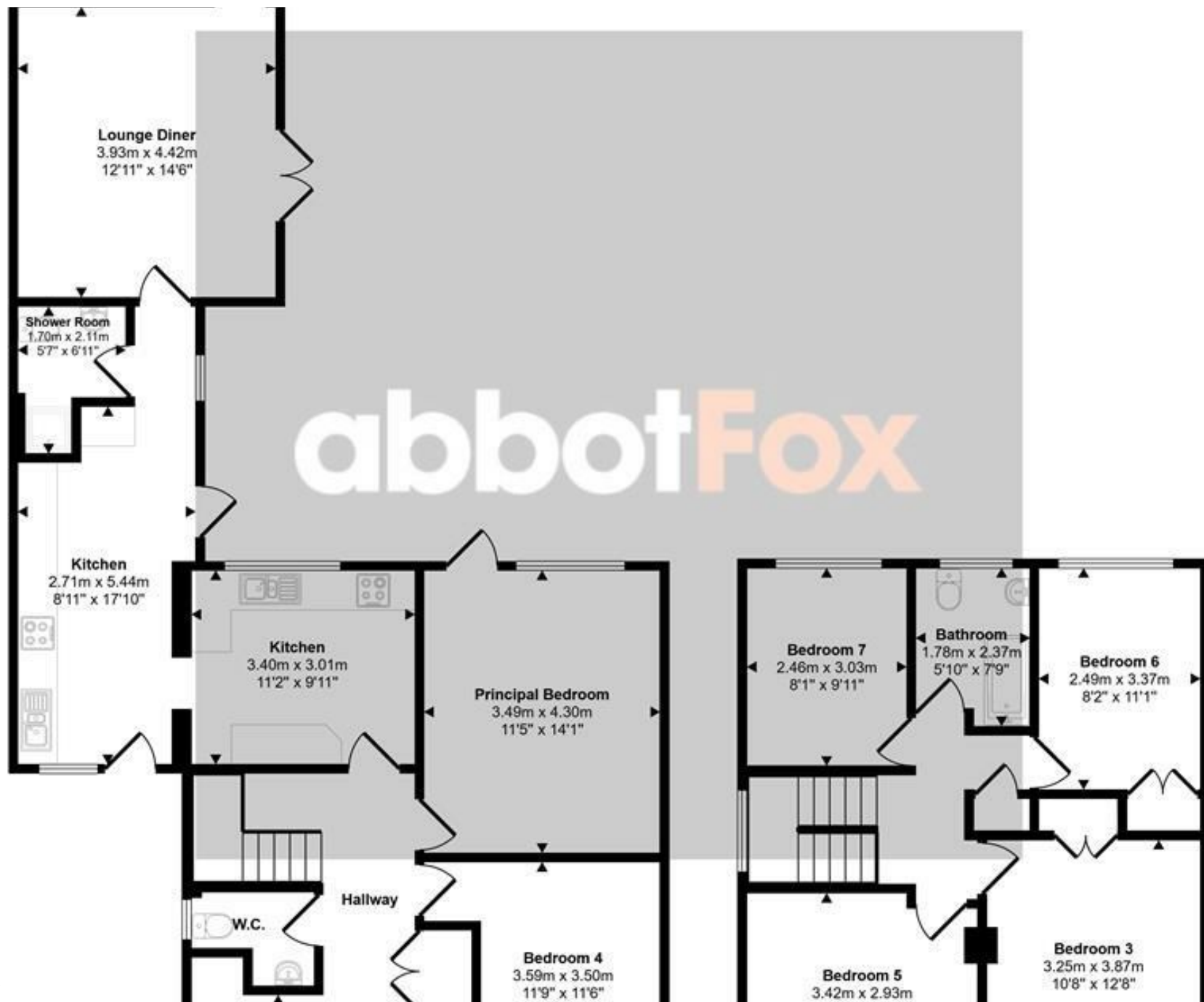






THE HIGHLIGHTS _____

- Student Property
- Available September
- Two Kitchens
- All Large Bedrooms



abbotFox

Let's talk

01603 660000

sales@abbotfox.co.uk

@abbotfox

EPC RATING - C

Disclaimer – In accordance with the Property Misdescriptions Act, the company abbotFox gives notice that all descriptions, references to condition, necessary permissions for use and other details are given in good faith and believed to be correct, but any purchaser should not rely on them as statements of fact, and must satisfy themselves by inspection or other means, as to their accuracy.