



Henry Doulton Drive, SW17

£1,850 Per calendar month

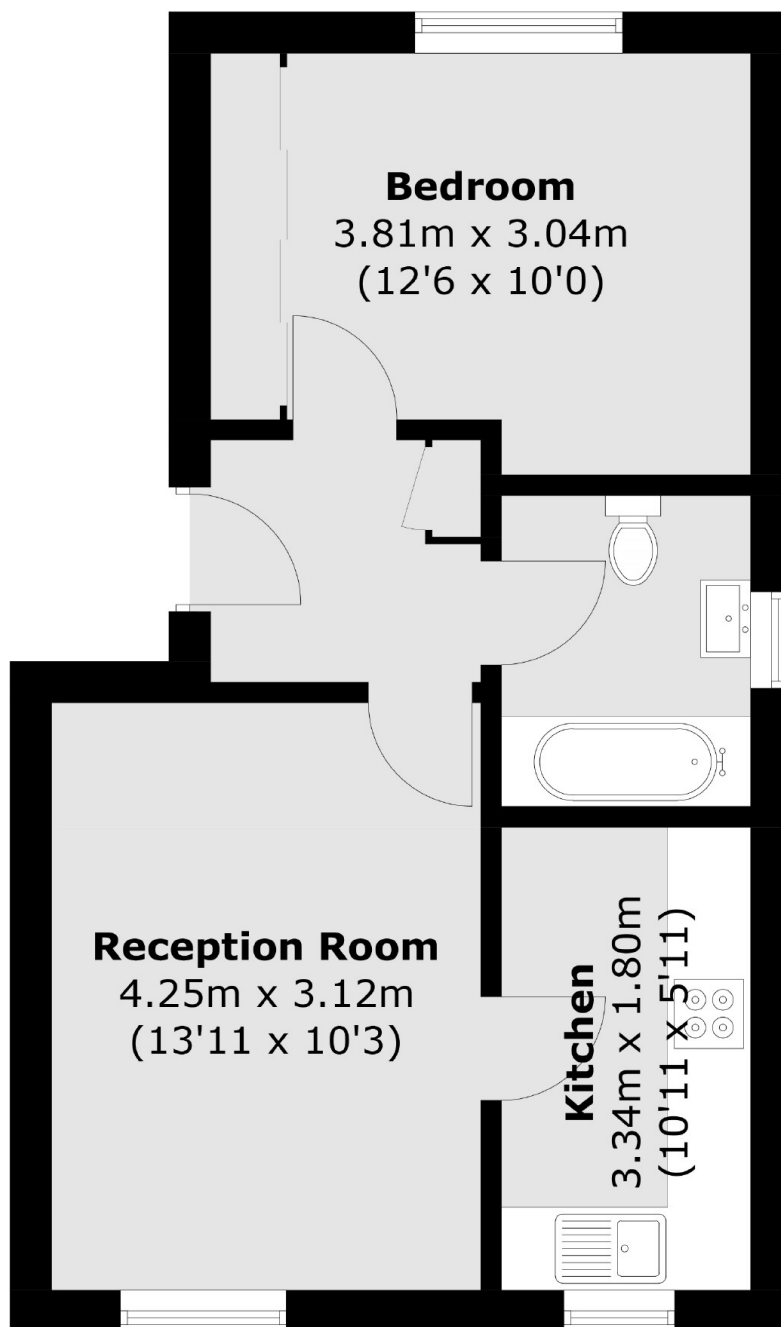
A spacious one bedroom apartment nestled in the Heritage Park development with a bright reception room, separate kitchen and neutrally decorated throughout.

Henry Doulton Drive is enviably located on the doorstep of Tooting Common with easy access to the many shops, bar and restaurants of Tooting High Street. Tooting Bec and Balham Underground stations are only a short stroll away.

Features

- One Double Bedrooms
- Bright Reception
- Separate Kitchen
- Neutrally Decorated
- Wooden Flooring
- Wandsworth Borough

Henry Doulton Drive, London, SW17



Total area (approx.): 39.9 sq. m (429.5 sq. ft)