

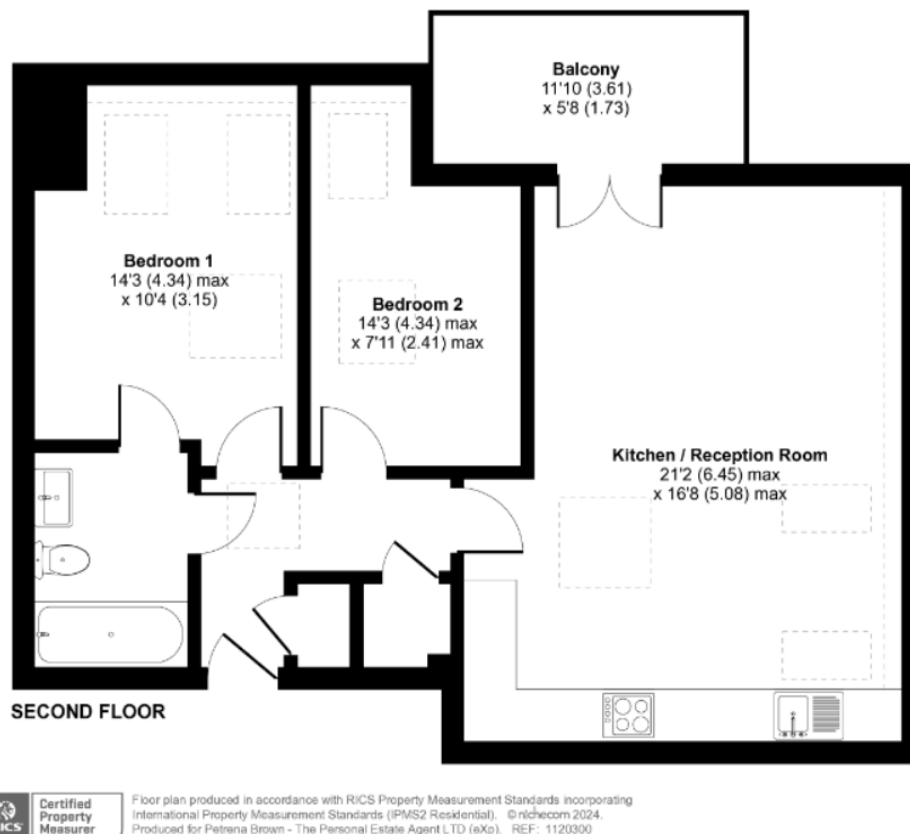
143 Hayes Lane , Hayes , BR2 9EQ

Guide Price £450,000 - £475,000

2 1 1



- £450,000 - £475,000
- Top Floor Location
- Open Plan Living
- Allocated Gated Parking
- Fantastic Communal Garden
- Two Bedroom Apartment
- Stunning balcony and views
- Immaculately presented
- Long Lease
- Ref PB0330



£450,000 - £475,000 Immaculately presented two bedroom luxury top floor apartment. The property has a high specification finish throughout with integrated appliances, leading to an open plan lounge/diner. There is a large balcony over looking the splendid communal gardens, with fantastic views. Gated, allocated parking is located to the front of the property. It is a short walk to Hayes Village with pub, cafes and local shops. There are fast and frequent trains from Bromley South Station to Victoria and Hayes Station is within walking distance. PB0330