



Romsey Road, SOUTHAMPTON SO16 4DD

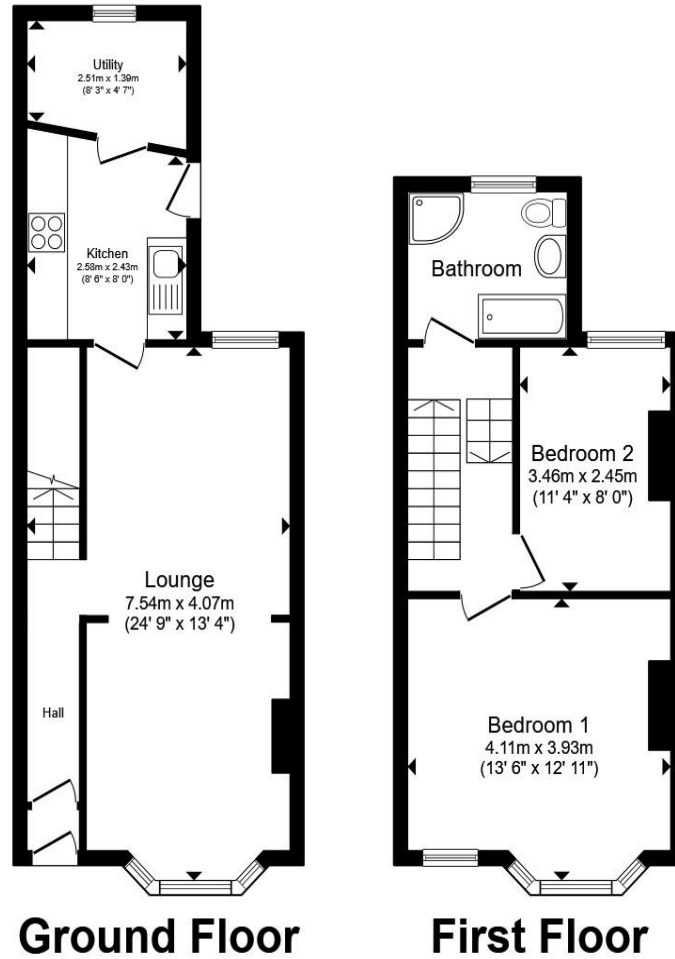
welcome to

Romsey Road, SOUTHAMPTON

Well-Presented Two Bedroom Mid-Terrace Home - Romsey Road, Southampton

Situated on the ever-popular Romsey Road, this attractive two-bedroom mid-terraced property offers well-proportioned accommodation arranged over two floors, ideal for first-time buyers, professionals or investors alike.





Entrance Hall

Lounge

24' 9" max into bay x 13' 4" max (7.54m max into bay x 4.06m max)

Kitchen

8' 6" max x 8' max (2.59m max x 2.44m max)

Utility

8' 3" max x 4' 7" max (2.51m max x 1.40m max)

Landing

Bedroom 1

13' 6" max into alcove x 12' 11" max into bay (4.11m max into alcove x 3.94m max into bay)

Bedroom 2

11' 4" x 8' max into alcove (3.45m x 2.44m max into alcove)

Bathroom

Total floor area 75.0 m² (807 sq.ft.) approx

This floor plan is for illustrative purposes only. It is not drawn to scale. Any measurements, floor areas (including any total floor area), openings and orientation are approximate. No details are guaranteed, they cannot be relied upon for any purpose and they do not form part of any agreement. No liability is taken for any error, omission or misstatement. A party must rely upon its own inspection(s). Powered by www.propertybox.io

welcome to

Romsey Road, SOUTHAMPTON

- No Onward Chain
- Fitted Kitchen with Adjoining Utility Room
- On Street Parking Available Nearby
- Low Maintenance Garden
- Popular and Convenient Romsey Road Location

Tenure: Freehold EPC Rating: D

Council Tax Band: B

£240,000



Please note the marker reflects the postcode not the actual property

view this property online fox-and-sons.co.uk/Property/SOU117977



Property Ref:
SOU117977 - 0004

1. MONEY LAUNDERING REGULATIONS Intending purchasers will be asked to produce identification documentation at a later stage and we would ask for your co-operation in order that there is no delay in agreeing the sale. 2. These particulars do not constitute part or all of an offer or contract. 3. The measurements indicated are supplied for guidance only and as such must be considered incorrect. Potential buyers are advised to recheck measurements before committing to any expense. 4. We have not tested any apparatus, equipment, fixtures or services and it is in the buyers interest to check the working condition of any appliances. 5. Where an EPC, or a Home Report (Scotland only) is held for this property, it is available for inspection at the branch by appointment. If you require a printed version of a Home Report, you will need to pay a reasonable production charge reflecting printing and other costs. 6. We are not able to offer an opinion either written or verbal on the content of these reports and this must be obtained from your legal representative. 7. Whilst we take care in preparing these reports, a buyer should ensure that his/her legal representative confirms as soon as possible all matters relating to title including the extent and boundaries of the property and other important matters before exchange of contracts.

Fox & Sons is a trading name of Sequence (UK) Limited which is registered in England and Wales under company number 4268443, Registered Office is Cumbria House, 16-20 Hockliffe Street, Leighton Buzzard, Bedfordshire, LU7 1GN. VAT Registration Number is 500 2481 05.


fox & sons



02380 225155



Southampton@fox-and-sons.co.uk



32 - 34 London Road, SOUTHAMPTON,
Hampshire, SO15 2AG



fox-and-sons.co.uk